

Daily Epidemiological Report for SARS-Cov_2

Report No. 313

Date Issued 10 Feb. 2021 @22h58

1. PURPOSE

The report provides a descriptive analysis of SARS-Cov-2 related cases and deaths, which were detected, reported and investigated in the Eastern Cape Province, as on 10 Feb. 2021.

2. HIGHLIGHTS

a. As on the 10th February 2021, **142** new SARS-Cov-2 cases were reported and **5** cases transferred in from other provinces. The majority of newly reported cases were in the Buffalo City Metro3 (32%), followed by Nelson Mandela Metro (17%) and Chris Hani districts (13.6%).

- Active Cases: Of the **2029** current active cases, majority are in Chris Hani (**27%**), followed by Joe Gqabi (**21.4%**) and OR Tambo (**16.5%**).
- The provincial recovery rate was **93.2%**. Joe Gqabi and Chris Hani districts reported a recovery rate below 90%.
- From the 5th of January 2021 to date, the testing rate has increased while the percentage of specimens testing positive has decreased.

b. **Covid-19 related deaths:**

- In the last 24 hours, **33** new deaths were reported with **12** of the deaths occurring in the last 48 hours (DATCOV).
- **Clinical audits and back capturing of deaths into DATCOV have identified an increase in the number of deaths especially in between June and December 2020.**

c. **Hospitalizations and outcomes:**

As on 10 February 2021, the cumulative number of hospitalized patients was **30,863**; 70.4% in the public sector and 29.6% in the private sector. Of the current admissions, about 79%, were admitted in the general ward, 13.9% in ICU and 7% in High Care. More than 34% were on oxygen and 5.8% were on ventilation.

d. **Healthcare workers:**

- The cumulative number of healthcare workers who tested positive for SARS-Cov-2 was **11,175** and **261** demised (the case fatality rate was 2.3%).
- Nurses were the most affected, followed by doctors and clinical associates. **There is an increase in the positivity rate among healthcare workers in the metros.**

Conclusion

- The burden of disease due to SARS-Cov-2 appears to be declining but still remains high in some areas of the province.
- Just over half of the active cases are in Chris Hani, Joe Gqabi, OR Tambo and Amathole.
- Six districts report a recovery rate, which is above 90% and 2 districts, Chris Hani and Joe Gqabi, report recovery rates less than 90%.
- There is a need to strengthen identification of suspected cases, collection specimens for COVID-19 testing, isolation of cases and quarantining of contacts. Promoting compliance to non-pharmaceutical interventions remains a central strategy in preventing further spread of infections in communities.

3. SARS-Cov-2 CASES & DEATHS

3.1. Summary of all cases and deaths

On the 10th of February 2021, about **142** new cases, **5** transfer-ins and **33** deaths (**12** occurred in the last 48 hours) were reported. The cumulative number of cases and deaths were **193,041** and **11,028** respectively.

	No. of cases	Transfer in	New Cases	Total	%	Deaths	New Deaths		Total	CFR
							*Newly Reported	**Newly occurred		
Male	76226	3	63	76292	39,5	4717	5	4	4726	6,2
Female	116467	2	79	116548	60,4	6278	16	8	6302	5,4
Unknown	201			201	0,1	0			0	0,0
Total	192894	5	142	193041	100,0	10995	21	12	11028	5,7

* Deaths which occurred more than 48 hours ago ** Deaths which occurred within the last 48 hours of reporting

The provincial case fatality rate (CFR) was reported as 5.7%, with a CFR of 6.2% among males and 5.4% among the female population. Clinical audits in hospitals are vital and provide valuable information to estimate the burden of disease.

District	Cases	Transfer in	New Cases	Total Confirmed	Recoveries	Deaths	New Deaths		Total Deaths	CFR%	Recovery Rate	Active Cases
							*Newly Reported	**Newly occurred				
Alfred Nzo	7882		6	7888	7348	411	0	1	412	5,2	93,2	128
Amathole	19167		12	19179	17876	1079	1	2	1082	5,6	93,2	221
BC Metro	38431	1	46	38478	36004	2306	4	5	2315	6,0	93,6	159
Chris Hani	19343		20	19363	17341	1473	1	0	1474	7,6	89,6	548
Joe Gqabi	7365		7	7372	6567	367	3	1	371	5,0	89,1	434
NM Metro	55056	1	24	55081	51701	3266	0	0	3266	5,9	93,9	114
OR Tambo	22308		12	22320	20717	1254	12	3	1269	5,7	92,8	334
S Baartman	21640		13	21653	20734	839	0	0	839	3,9	95,8	80
Imported	599	3	1	603	598	0			0	0,0	99,2	5
Unspecified	1103	0	1	1104	1098	0			0	0,0	99,5	6
E. Cape	192894	5	142	193041	179984	10995	21	12	11028	5,7	93,2	2029

* Deaths that occurred more than 48 hours ** Deaths which occurred within the past 48 hours of reporting

In the past 24 hours, 142 new cases and 5 transfer-ins were reported; Buffalo City Metro (32%), Nelson Mandela Metro (17%), Chris Hani (13.6%), Sarah Baartman (8.8%), Amathole (8.2%), OR Tambo (8.2%), Joe Gqabi (4.8%) and Alfred Nzo (4.1%).

Of the 2029 active cases, Chris Hani district accounted for 27%, Joe Gqabi (21.4%), Amathole (10.9%), OR Tambo (16.5%), Alfred Nzo (6.3%), Buffalo City Metro (7.8%), Nelson Mandela Metro (5.6%), and Sarah Baartman (3.9%). The overall provincial recovery rate was 93.2%. Six districts reported a recovery rate greater than 90%

3.2. Newly diagnosed cases

Figure 1 provides the 7-day moving average of newly reported cases by district comparing a period of weeks, 24th - 30th Jan 2021 and 31st Jan – 07th Feb 2021.

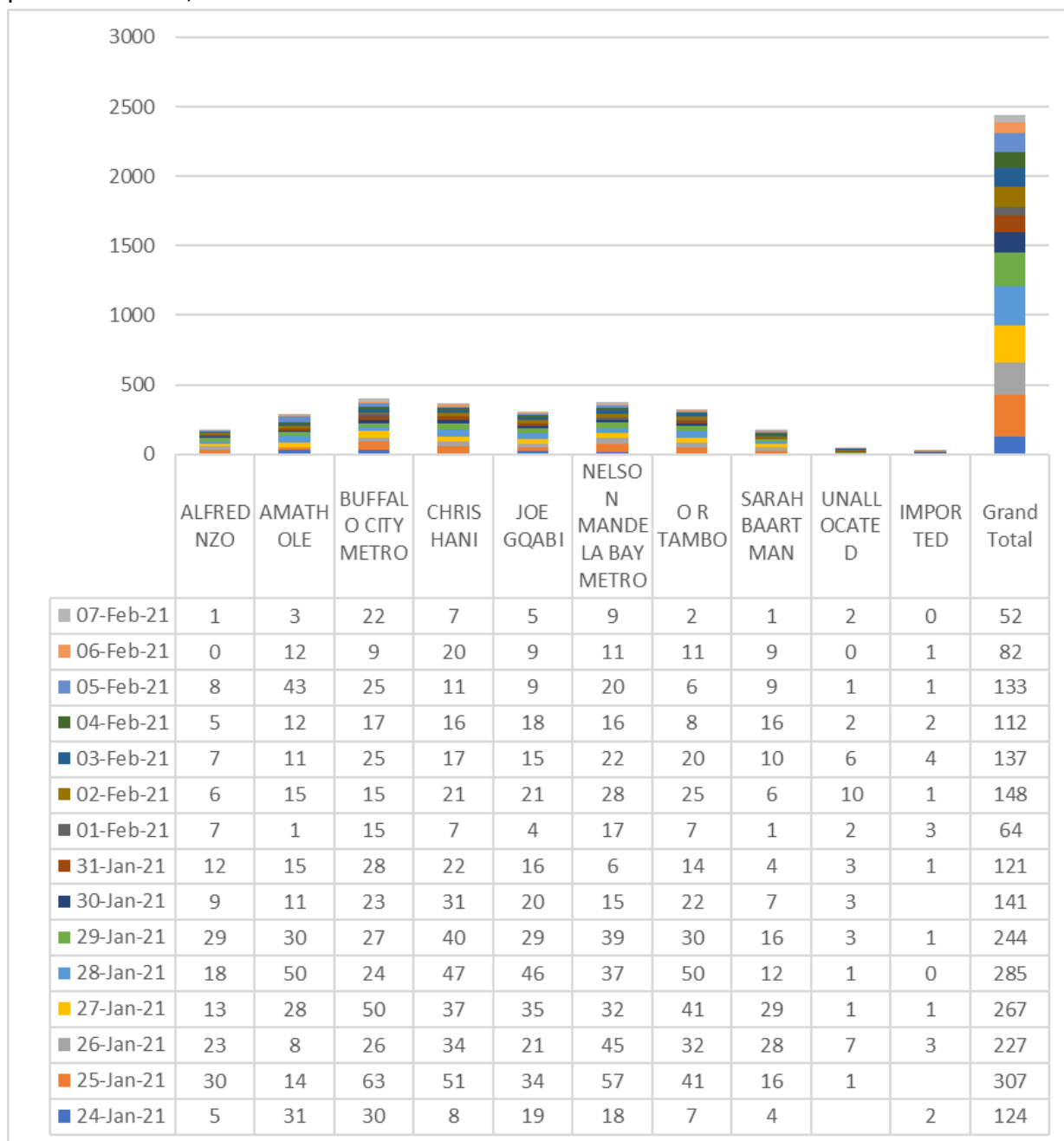


Fig. 1. Number of daily newly reported SARS-Cov-2 cases by district, as on 08th Feb. 2021

4. SARS-Cov-2 LAB TESTS & RESULTS

4.1. Test Results by Laboratory

The number of specimens tested by public and private sector laboratories was 857,579. About 63% of the tests were done in the public sector and 36.9% in private sector laboratories.

Table 3. Number of tests for Private and Public by Laboratories, as on 10 Feb 2021				
	Private	Public	Total	%
Alfred Nzo	2449	27095	29,544	3.4
Amathole	8339	68764	77,103	9.0
BC Metro	30821	92476	123,297	14.4
Chris Hani	6866	53852	60,718	7.1
Joe Gqabi	1281	25793	27,074	3.2
NMB Metro	35290	124640	159,930	18.6
OR Tambo	16631	65863	82,494	9.6
Sarah Baartman	3764	82071	85,835	10.0
Unclassified	211584	0	211,584	24.7
Eastern Cape	317025	540554	857,579	100.0

4.2. Antigen Testing

The total number of specimens tested using the antigen testing method, was 60,155 with a 12.7% positivity rate.

Table 4. No. of SARS-Cov-2 Tests and results using Antigen Test Method, as on 10 Feb 2021					
	Negative	Positive	Total	Percentage (%)	Positivity Rate (%)
A Nzo	4737	911	5648	9.4	16.1
Amathole	3216	599	3815	6.3	15.7
BC Metro	7638	1581	9219	15.3	17.1
Chris Hani	6137	1125	7262	12.1	15.5
Joe Gqabi	2080	455	2535	4.2	17.9
NM Metro	16245	1257	17502	29.1	7.2
OR Tambo	8396	1328	9724	16.2	13.7
Sarah Baartman	4161	289	4450	7.4	6.5
Total	52610	7545	60155	100.0	12.5

The Nelson Mandela Metro district accounted for 29.1%, followed by OR Tambo (16.2%), Buffalo City Metro (15.3%), Chris Hani (12.1%), Alfred Nzo (9.4%), Sarah Baartman (7.4%), Amathole (6.3%), and Joe Gqabi (4.2%). Proportion of specimens testing positive for SARS-Cov-2 using the Rapid Antigen Method was 12.5%, with Alfred Nzo (16.1%), Joe Gqabi (19.9%), Buffalo City Metro (17.1%), OR Tambo (13.7%) and Amathole (15.7%).

4.3. Tests by age group and sex

The following figure 3 provides the number of tests done by age group. The economically active age group (20 to 59 years) accounted for the majority of tests conducted (>63%).

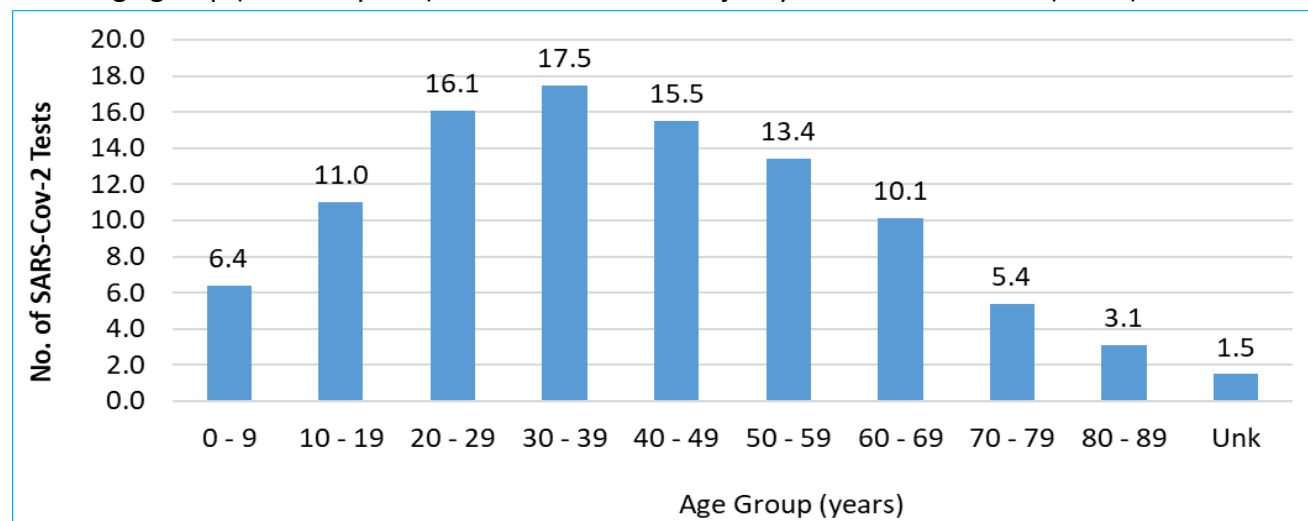


Fig. 2. Public sector SARS-Cov-2 tests by age group, as on 08th Feb. 2021

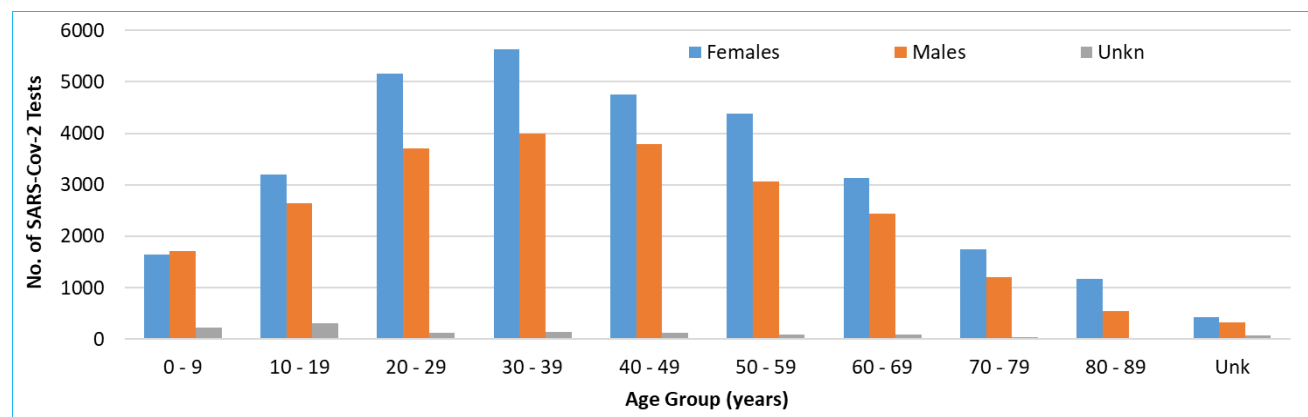


Fig. 3. No. of SARS-Cov-2 public sector tests by age group and gender, as on 08th Feb. 2021

Figure 4 provides the number of tests conducted in the public sector by age group and gender between the 07 December 2020 and 06 February 2021. The female population accounted for 31,281 (55.9%) and male population accounted for 23,459 (41.9%) of the positive tests. About 2.2% (1,249) lacked information on gender.

4.4. Turnaround Time

The turnaround time is used as a key performance indicator of the laboratory performance. The table below provides the turnaround time in both public and private laboratories that was reported by NICD.

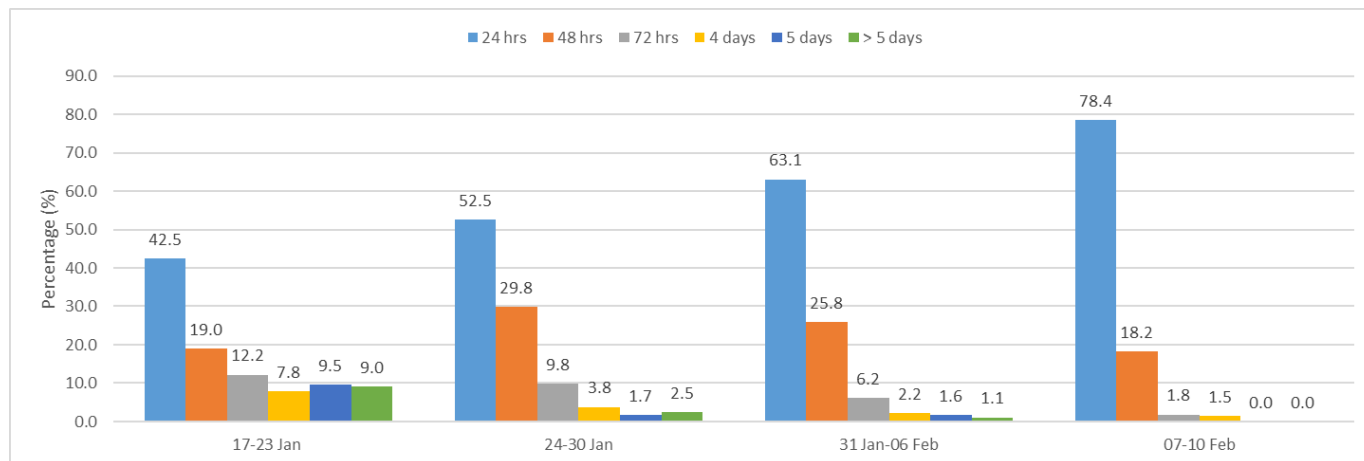


Fig. 4. Turnaround time for positive results by week as on 10th Feb. 2021

The period between 31 January and 06 February, 6.2% of the test results were available within 72 hours or less compared to 9.8% in the previous week, a decrease of 3.6%. More than 63% of the results were available within 24 hours, a 10.6% increase compared to the previous week. On the 10th February more than 78% of test results were available within 24 hours.

4.5. The 7-day moving average of SARS-Cov-2 tests & positivity rate

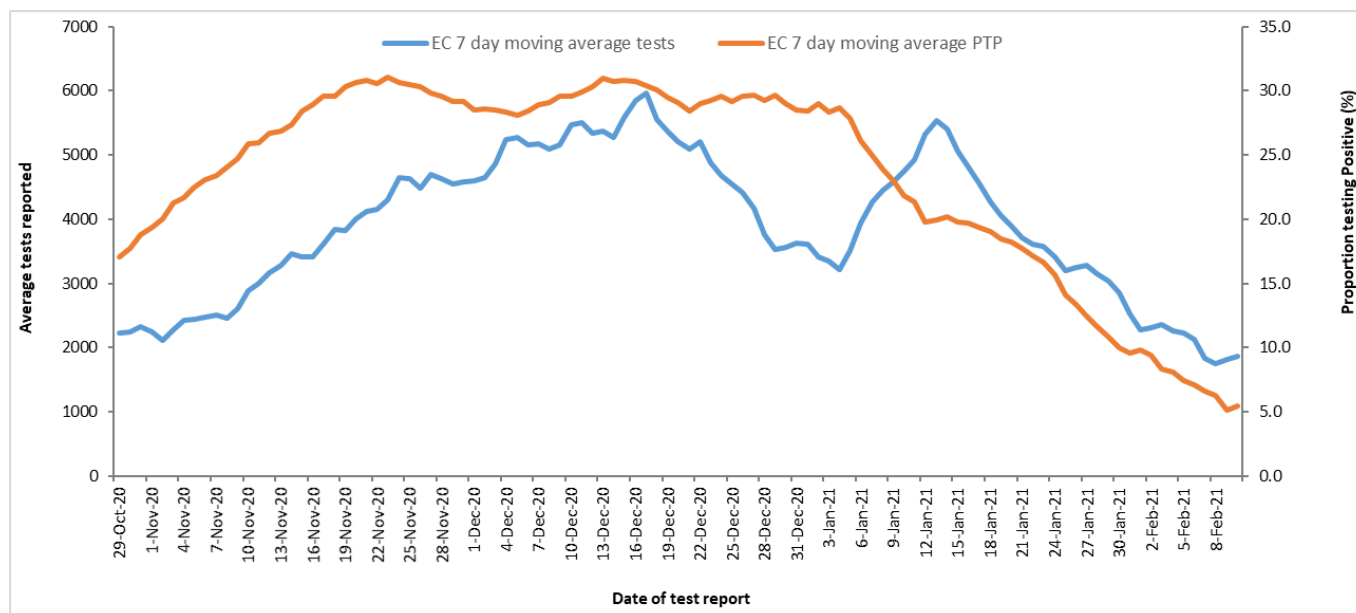


Fig. 5. 7-day moving average for laboratory tests and positivity rate, as on 10th Feb. 2021

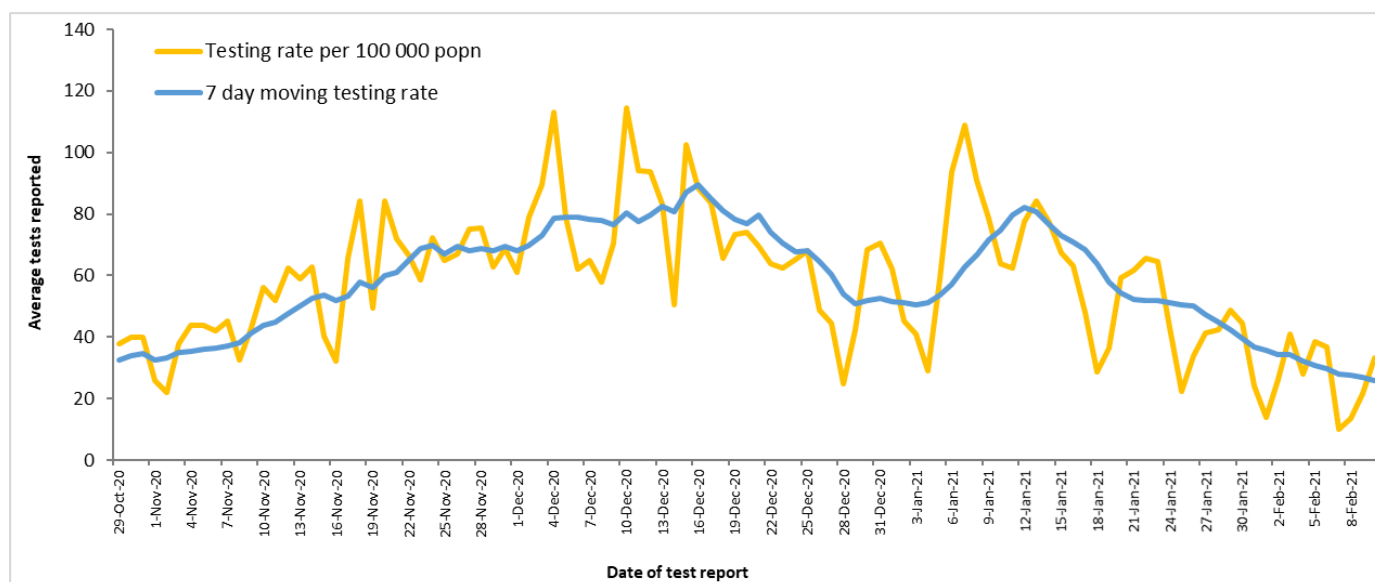


Fig. 6. The 7-day moving average for tests and testing rate, as on 10th Feb. 2021

The seven-day moving average and testing rate has decreased from 34 tests conducted per 100,000 on 03 February to 26 tests per 100,000 on 10 February 2021.

5. ACTIVE CASES, INCIDENCE & POSITIVITY RATE

5.1. Active SARS-Cov-2 cases and the cumulative positivity rate

District	Population Estimates	Number of tests	SARS-Cov-2 Cases (ALL)	Active SARS-Cov-2 Cases	SARS-Cov-2 per 100,000 (Active)	Cumulative Positivity Rate
Alfred Nzo	827826	29,544	7888	128	15.5	26.7
Amathole	798067	77,103	19179	221	27.7	24.9
BC Metro	798798	123,297	38478	159	19.9	31.2
Chris Hani	733743	60,718	19363	548	74.7	31.9
Joe Gqabi	343075	27,074	7372	434	126.5	27.2
NM Metro	1210803	159,930	55081	114	9.4	34.4
OR Tambo	1520922	82,494	22320	334	22.0	27.1
S Baartman	480223	85,835	21653	80	16.7	25.2
Imported			599	1		
Unspecified		211,584	1108	10		
Eastern Cape	6713457	857579	193041	2029	30.2	22.5

The province reported 30.2 active cases per 100 000 populations as of 10 February 2021. The cumulative positivity rate was 22.5%. Three districts reported a cumulative positivity rate above 30%. The Joe Gqabi district reported the highest incidence of active cases; 126.5 active cases per 100,000 population, followed by the Chris Hani and Amathole districts (74.7 and 27.7 respectively).

5.2. Incidence of SARS-Cov-2 cases

The incidence of SARS-Cov-2 is above the hotspot threshold (10 cases per 100 000 population) in all districts. Since week 2 there has been a decrease in incidence in all districts. The past two weeks the province observed a decrease following a rise observed in week 52 (20 to 26 December 2020).

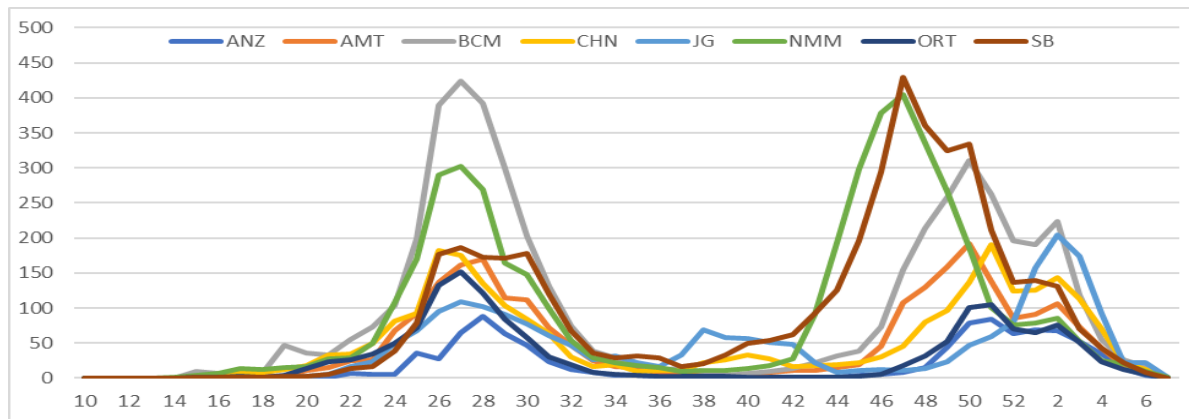


Fig. 7. Incidence of SARS-Cov-2 cases by epidemiological week, as on 08th Feb. 21

In the past 7 days, the incidence of SARS-Cov-2 decreased from 42.2 cases per 100,000 on the 04th of February to 30.2 per 100,000 on the 10th February (Figure 9). Only one district reported a minimum of >100 active cases per 100,000 populations, and 7 had less than 100 per 100,000 active cases.

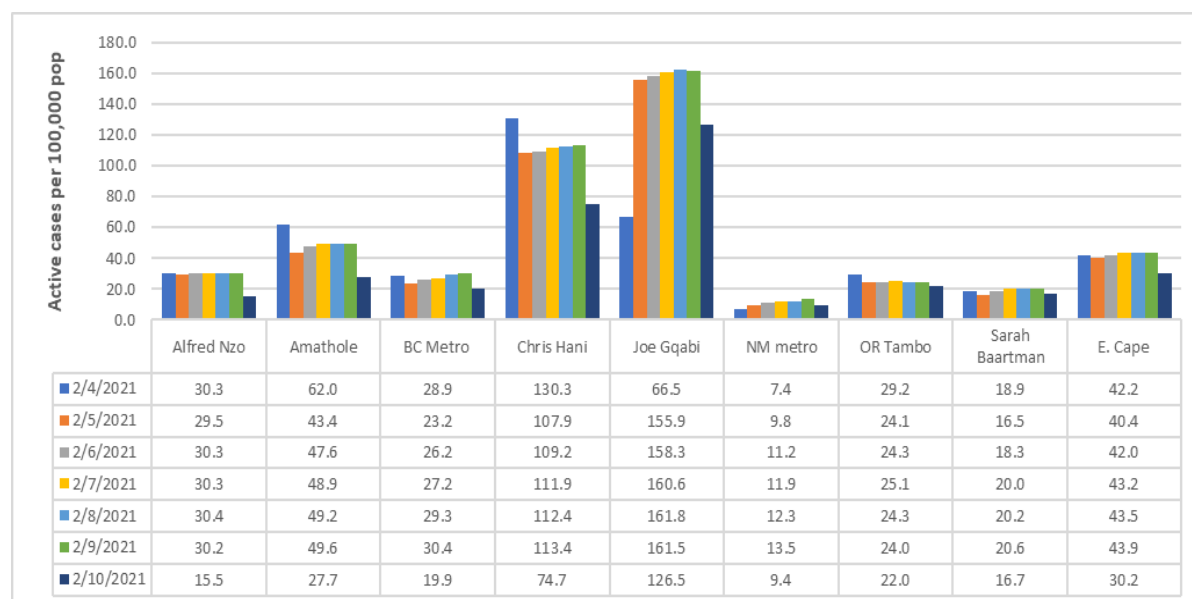


Fig. 8. Incidence of active SARS-Cov-2 (per 100,000) by district date, as on 10th Feb. 2021

5.3. Recovery Rate (%)

The figure below provides the recovery rate over a period of 7 days for each district.

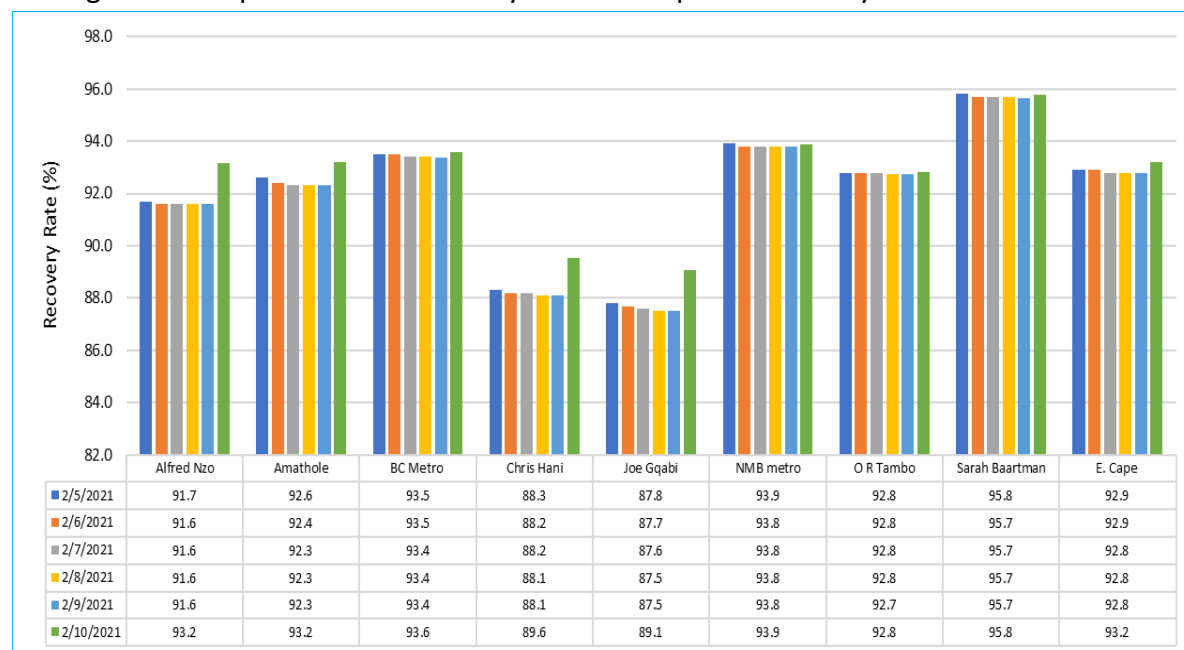


Fig. 9. Recovery Rate (%) by districts, as on the 10th Feb. 2021 (N=179,984)

The provincial recovery rate remained above 90% over the past 7 days. Six districts reported a recovery rate above 90%. The Chris Hani and Joe Gqabi districts reported a recovery rate below 90% (89.6% and 89.1% respectively).

5.4. Mapping of active cases, recoveries and deaths

The map shows the distribution of active cases, recoveries and deaths related to SARS-Cov2 in the province.

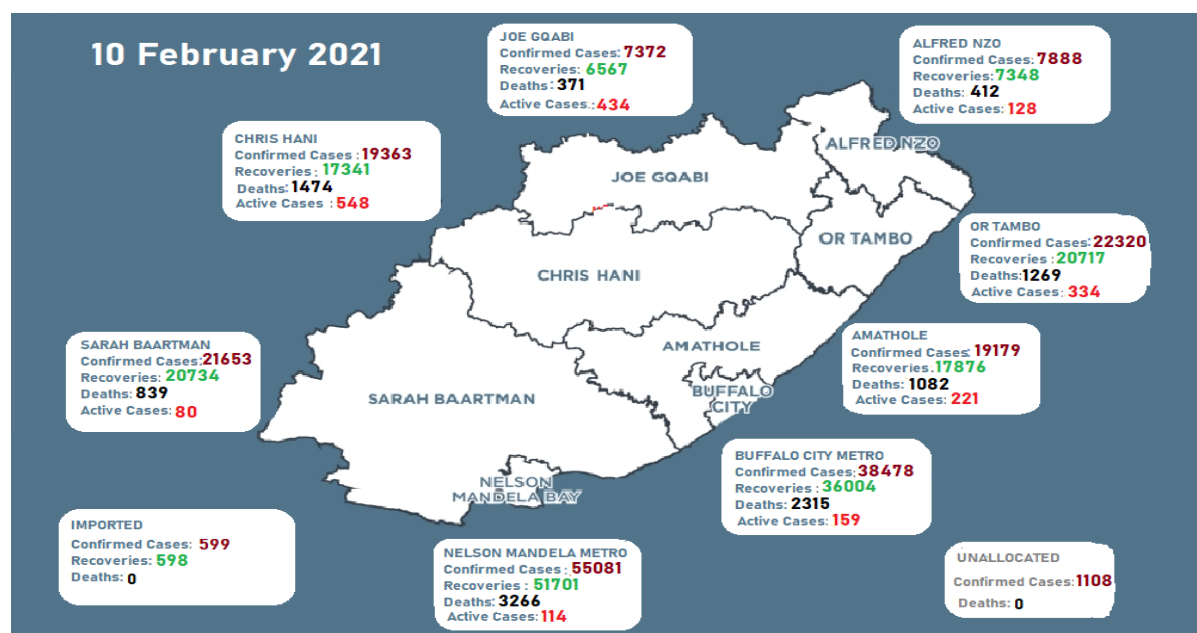


Fig. 10. Number of Covid-19 cases, recoveries and deaths, as on 10th Feb. 2021

6. SARS-COV-2 CASES AND 7-DAY MOVING AVERAGE

The graph below depicts the total number (including cumulative) of cases and the 7-day moving average.

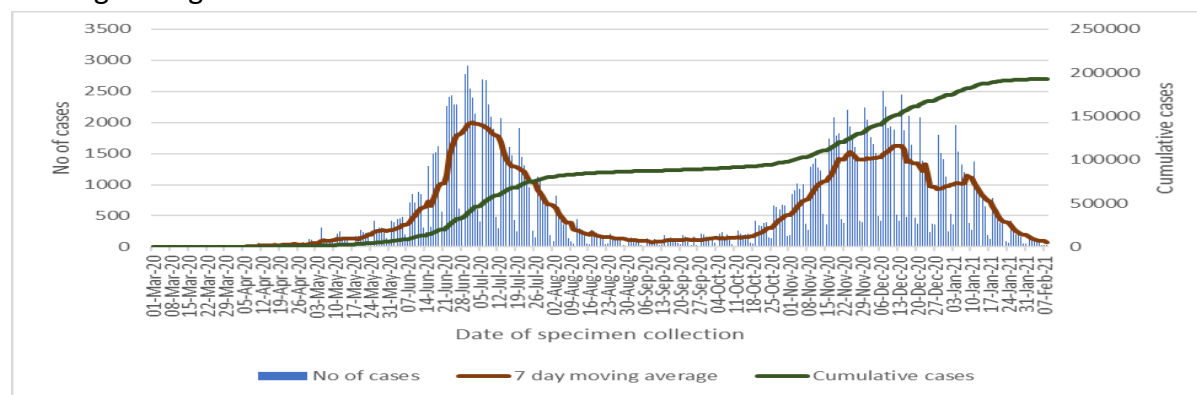


Fig. 11. The 7-day moving average for COVID-19 cases by date of specimen collection (10th Feb. 2021)

The number of daily newly diagnosed cases increased from the second half of October and peaked in the mid-December, and then decreased until to date. However, the cumulative number continues to show an upward trend. The second peak of the pandemic appears to be approaching the level of the first peak.

7. SARS-Cov-2 RELATED MORTALITY

7.1. SARS-Cov-2 related deaths

The table below provides the total number of cases, deaths and mortality rate by the month.

Month	Cases	Percent (%)	Deaths	Percent (%)	Case Fatality Rate (%)	Mortality Rate (per 100,000)
March	13	0.0	1	0.0	7.7	0.0
April	638	0.3	35	0.3	5.5	0.5
May	3282	1.7	285	2.6	8.7	4.2
June	23783	12.3	1034	9.4	4.3	15.4
July	50289	26.1	2028	18.4	4.0	30.2
August	8279	4.3	664	6.0	8.0	9.9
September	2991	1.6	212	1.9	7.1	3.2
October	8625	4.5	286	2.6	3.3	4.3
November	33706	17.5	1695	15.4	5.0	25.2
December	42469	22.0	2725	24.8	6.4	40.6
21-Jan	18119	9.4	1795	16.3	9.9	26.7
21-Feb	700	0.4	90	0.8	12.9	1.3
Unknown	0	0.0	145	1.3		2.2
Total	192894	100	10995	100	5.7	164

The month of December accounts for the second highest proportion of cases (22%) and the highest proportion of SARS CoV-2 related deaths (24.8%). The Case Fatality Rate was highest in January 2021 reporting a CFR of 9.9% when compared with other full months.

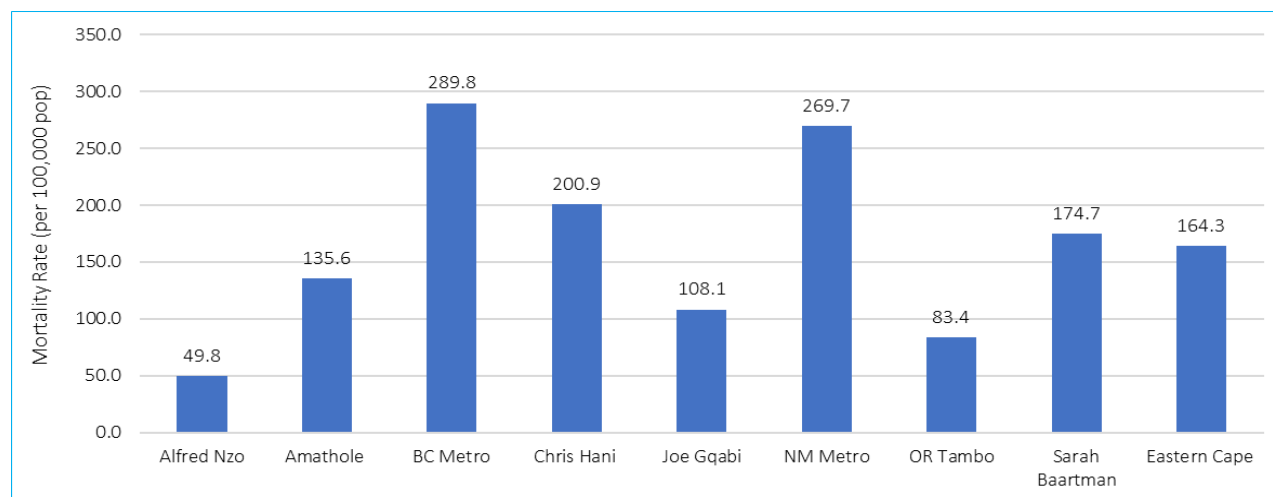


Fig. 12. SARS-Cov-2 related mortality per 100,000 by district, as on 10th Feb. 2021

The mortality rate related to SARS-Cov-2 was 164.3 deaths per 100,000 populations. The highest mortality rate was observed in Buffalo City Metro (289.8 deaths per 100,000) followed by Nelson Mandela Metro (269.7 deaths per 100,000), Chris Hani (200.9 per 100,000) and Sarah Baartman (174.7 per 100,000).

7.2. Number of reported SARS-Cov-2 related deaths

The figure below depicts the daily deaths and the cumulative number of deaths.

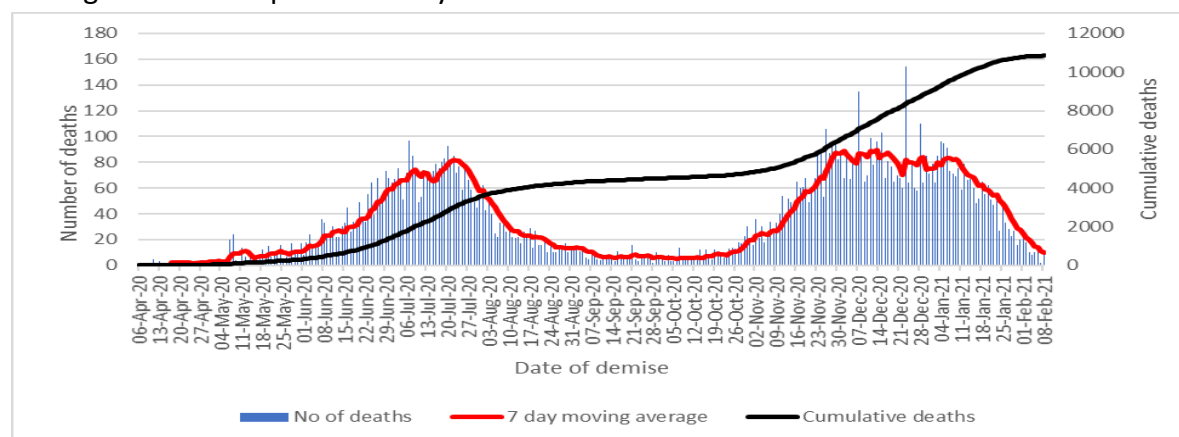


Fig. 13. Daily and cum. SARS-Cov-2 related deaths by date of demise, as on 10th Feb. 2021

The number of daily deaths increased since May 2020 and peaked on the 20th July 2020, then rapidly declined in August and October. In last week of October, the number of deaths increased and peaked in mid-December. The cumulative number of deaths continues to increase until to date.

7.3. Case Fatality Rate by district



Fig. 14. SARS-Cov-2 Case Fatality Rate (%) by district, as on 10th Feb. 2021 (N=11,028)

The case fatality rate has increased over the last seven days by 0.1% from 5.6% on the 04th Feb to 5.7% on 08th Feb 2021. The Chris Hani district reported the highest case fatality rate of 7.6%, followed by Buffalo City Metro (6%), Nelson Mandela Metro (5.9%), Amathole (5.6%), OR Tambo (5.7%), Joe Gqabi (5%), Alfred Nzo (5.2%) the lowest being Sarah Baartman by 3.9%.

7.4. Case Fatality Rate by age group

The figure below provides the case fatality rate for both males and females.

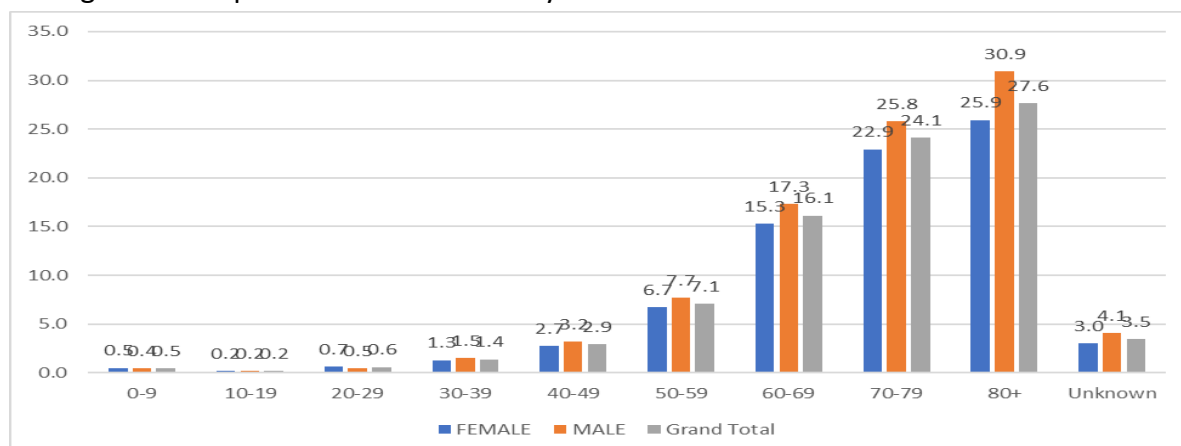
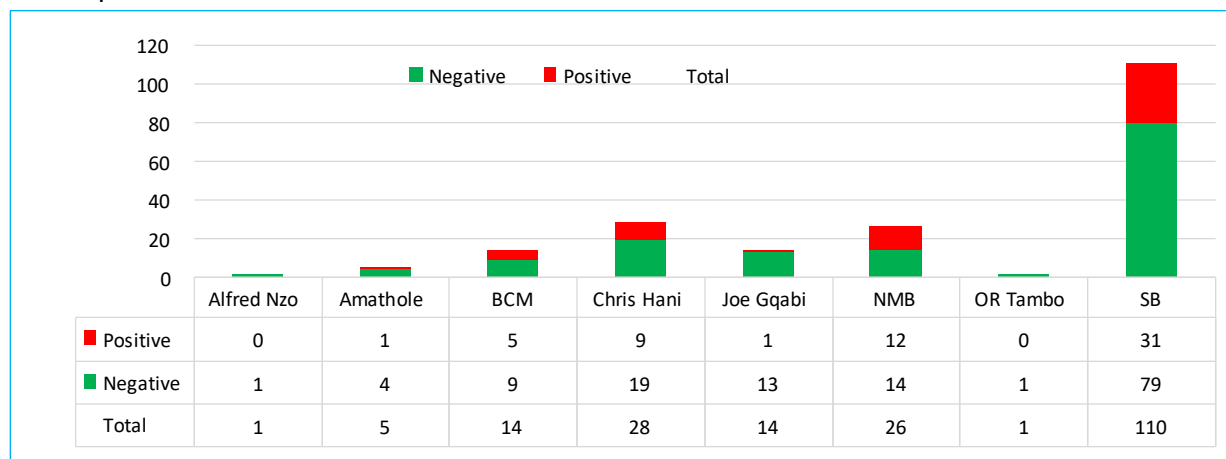


Fig. 15. SARS-Cov-2 related Case Fatality Rate (%) by age group, as on 08th Feb. 2021

The case fatality rate increases with an increasing age. Since the beginning of the pandemic, the younger population had a low case fatality rate compared to the older population that had an increased case fatality rate. The male population had a higher case fatality rate compared to the female population.

7.5. *Post-mortem testing

Thirty percent (30%), i.e. 59 of the 199 post-mortem tests (PMTs) which done in the province tested positive for SARS-Cov-2.



*Data on post mortem test updated when available from NHLS/NICD

Fig. 16. No. of post mortem test results by district, as on 22nd Dec. 2020 (Tests=199)

Fifty-five percent (55,3%) of the tested were done in Sarah Baartman and 31 tested positive (28,2% positivity rate). Twenty-eight (28) PMTs were done in Chris Hani (32,1% positivity rate) and twenty-six (26) in NM Metro Metro (46,2% positivity rate).

7.6. Deaths by health facilities

The figure below provides the number of deaths by hospital or place. Only hospitals or places with a minimum of 24 deaths are included in the figure below.

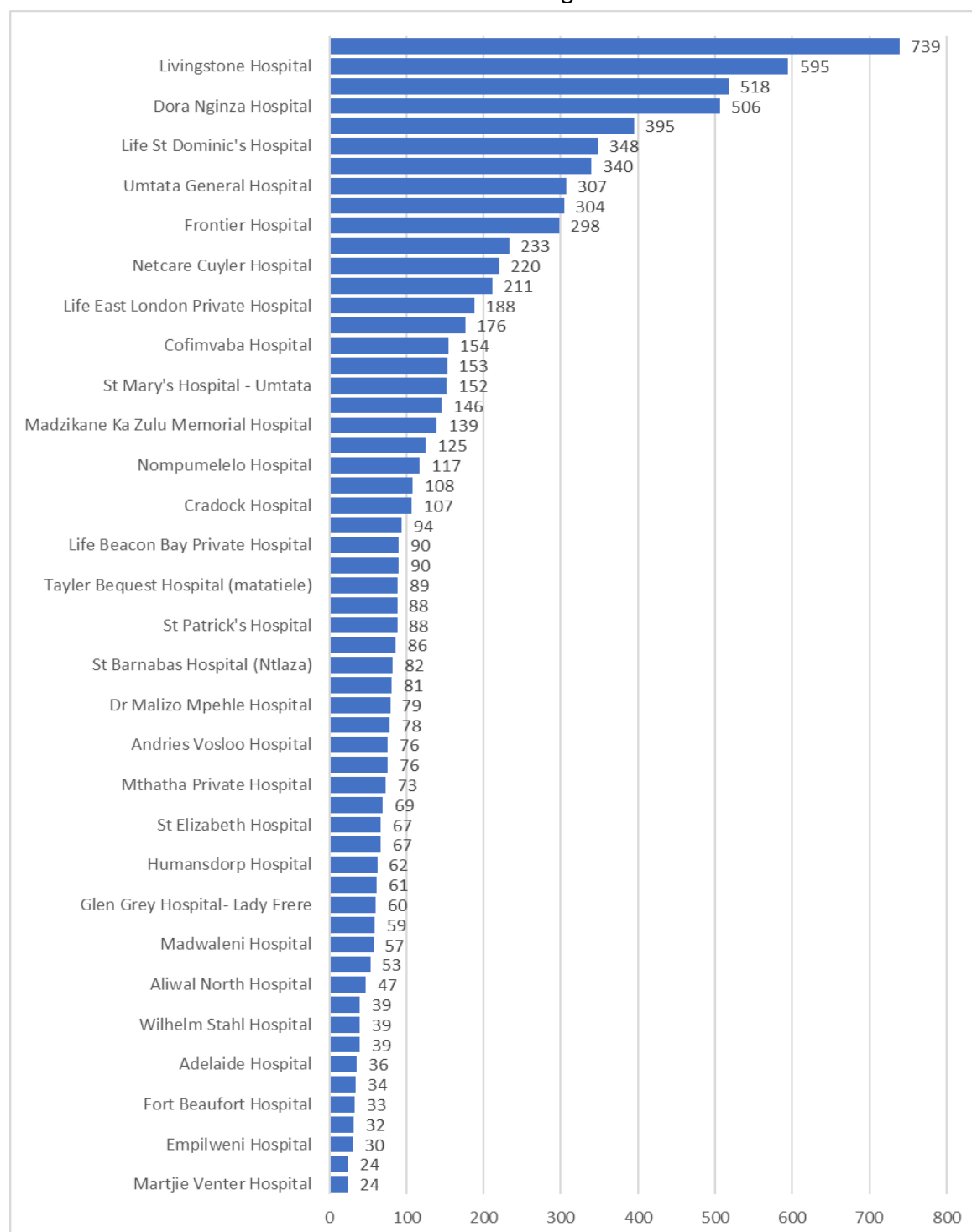


Fig. 17. No. of SARS-Cov-2 related deaths by the facility, as on 08th Feb. 2021

Livingstone Hospital (8.1%), Dora Nginza Hospital (6.5%) and Life St Dominic's Private Hospital (5.7%) recorded the three highest number of deaths in facilities (N=9084).

6. HEALTHCARE WORKERS

6.1. Cases and deaths among HCWs

The number of reported healthcare workers who tested positive for SARS-Cov-2 was 11,175 and 261 persons demised.

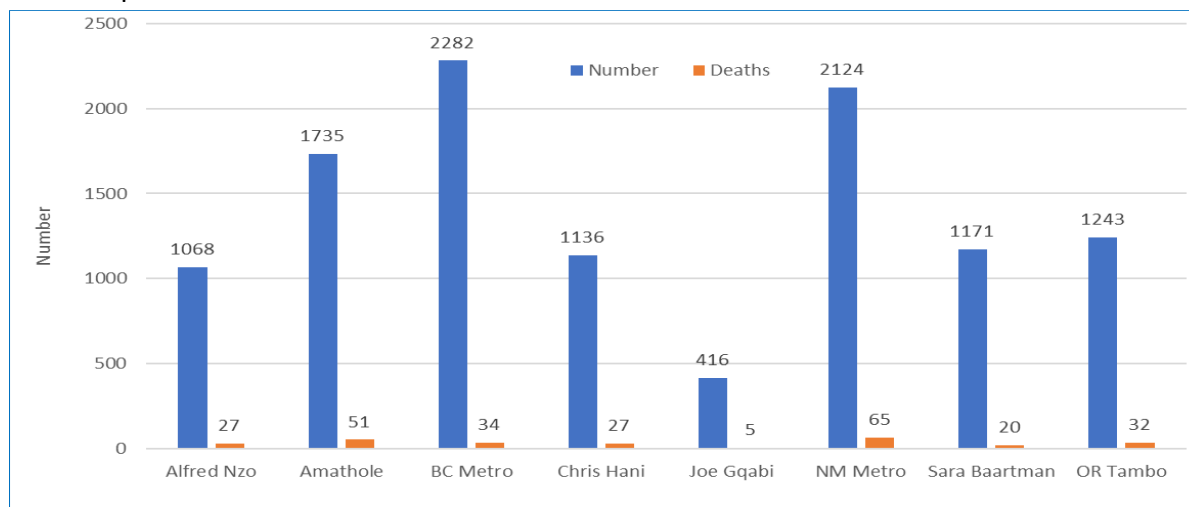


Fig. 18. SARS-Cov-2 positive Healthcare Workers, as on 10th Feb. 2021 (N = 11,175)

The number of healthcare workers who tested positive for SARS-Cov-2 in Buffalo City Metro was 2,282 (34 deaths), Nelson Mandela Metro 2,124 (65 deaths), Amathole 1,735 (51 deaths), Chris Hani 1,136 (27 deaths), OR Tambo 1243 (32 deaths) and Sarah Baartman 1171 (20 deaths) and Alfred Nzo (1068 cases, with 27 deaths). The Joe Gqabi (416 cases, with 5 deaths) reported least number of health care workers' infections and deaths.

6.2. SARS-Cov-2 Cases by job category

The table below provides the number of selected healthcare professionals employed by the State and SARS-Cov-2 cases by job categories, and the positivity rate of that job category.

	Number	Cases	Positivity Rate (%)
Admin	12434	711	5.7
Allied Professionals	3041	215	7.1
Doctors & Clinical Assoc	2369	416	17.6
Nurses	20650	4575	22.2
Emergency Medical Services	2498	259	10.4

The positivity rate among the nurses was 22.2%, followed by doctors and clinical associates (17.6%), allied professionals (7.1%), EMS (10.4%), and admin personnel (5.7%). The positivity rates among healthcare workers have a negative impact on patient safety, staff morale and confidence, and the capacity of the State to provide quality health services to the population.

6.3. Case Fatality Rate (%) among HCWs

The figure below provides the cases fatality rate among all healthcare workers.

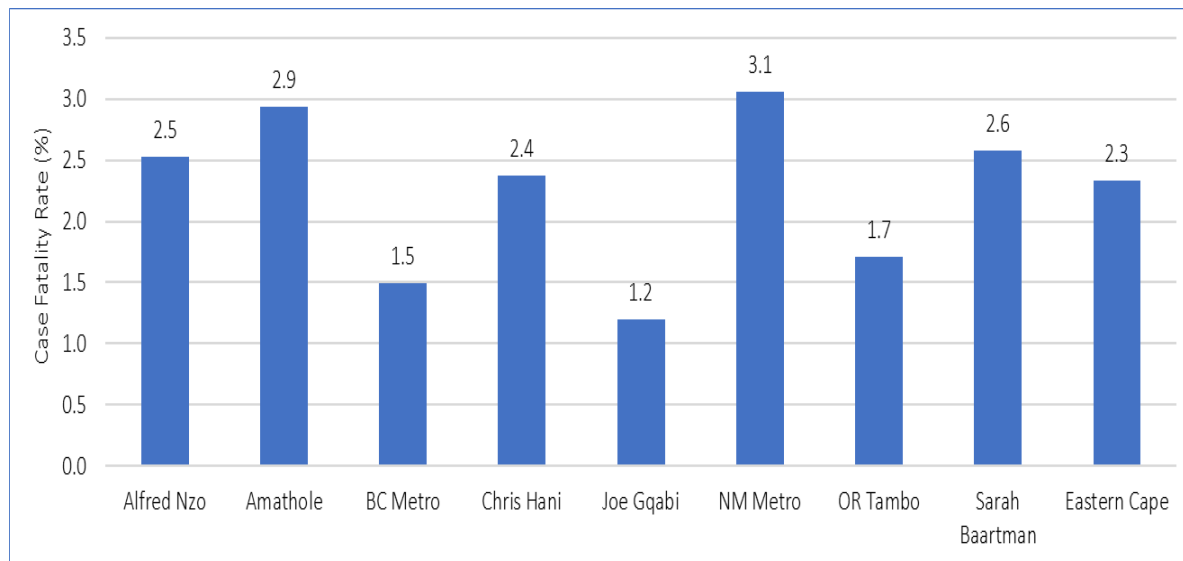


Fig. 19. SARS-Cov-2 Case Fatality Rate (%) among HCWs, as on 10th Feb. 2021 (N=261)

The case fatality rate among healthcare workers was 2.3%. Nelson Mandela Metro, Amathole, Alfred Nzo, Chris Hani and Sarah Baartman had each more than 2% of the healthcare workers succumbing to SARS-Cov-2, Buffalo City Metro (1,5%). The lowest case fatality rate was observed in Joe Gqabi (1.2%).

7. Hospitalization and outcomes

7.1. Admissions and outcomes

The cumulative number of SARS-Cov-2 hospitalizations is 30,863 (DATCOV).

Table 8: No of hospitalisation by district as on 10 February 2021				
District	Private	Public	Grand Total	Percentage
Alfred Nzo	1646	89	1735	5,6
Amathole	2325	0	2325	7,5
Buffalo City Metro	4224	3013	7237	23,4
Chris Hani	2522	727	3249	10,5
Joe Gqabi	646	0	646	2,1
Nelson Mandela Bay Metro	6565	4326	10891	35,3
O R Tambo	2196	863	3059	9,9
Sarah Baartman	1587	134	1721	5,6
Total	21711	9152	30863	100

Of the reported hospitalizations, 21,711 (70.4%) occurred in public sector and 9,152 (29.6%) in private sector health facilities. The metros account for about 58.7% of total admissions.

Table 9 : No of hospitalisation and Outcomes as on 10 February 2021			
Eastern Cape	Public	Private	Total
Cumulative Admissions	21711	9152	30863
Died	6913	2223	9136
Discharged Alive	12916	6688	19604
Transferred Out	1466	30	1496
Currently Admitted	364	204	568
In ICU	3	76	79
In High Care	28	12	40
In General	333	116	449
On Oxygen	182	13	195
Ventilated	5	28	33

More than 63% of hospitalized patients were discharged alive and 65.8% of the reported discharges were from the public sector. Over 29% hospitalized cases demised due to SARS-Cov-2 related causes with 75.6% of those reported deaths occurring in public sector facilities. Of the 568 current admissions, about 79% were admitted in the general ward, 13.9% in ICU and 7% in High Care. More than 34% of current admissions were on oxygen and 5.8% were on ventilation.

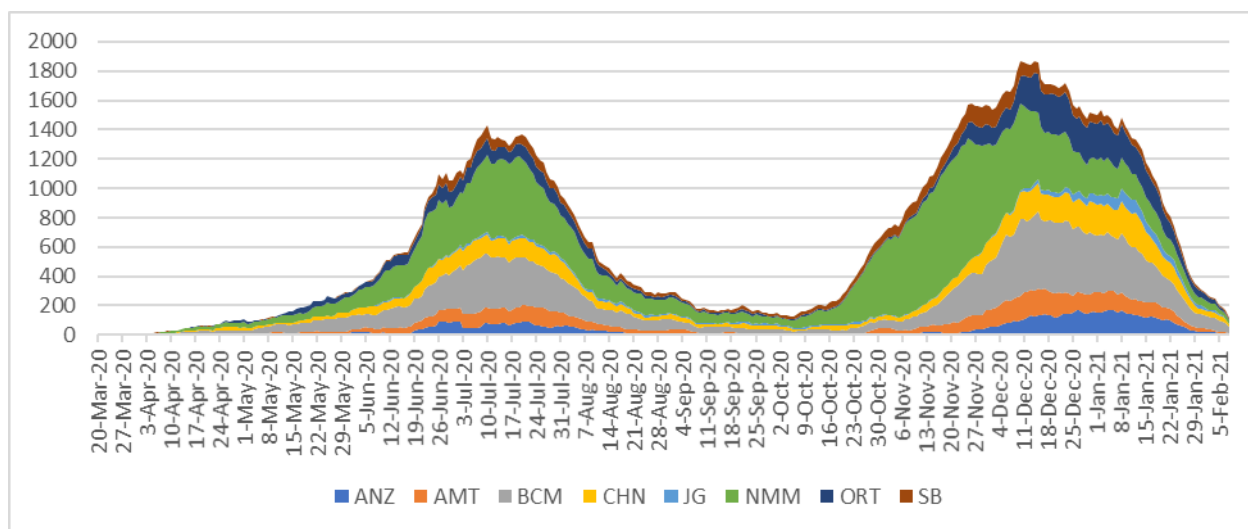


Fig. 20. Average (7 day moving) daily admissions, Eastern Cape Health Facility Districts, as on 10th Feb. 2021 (DATCOV)

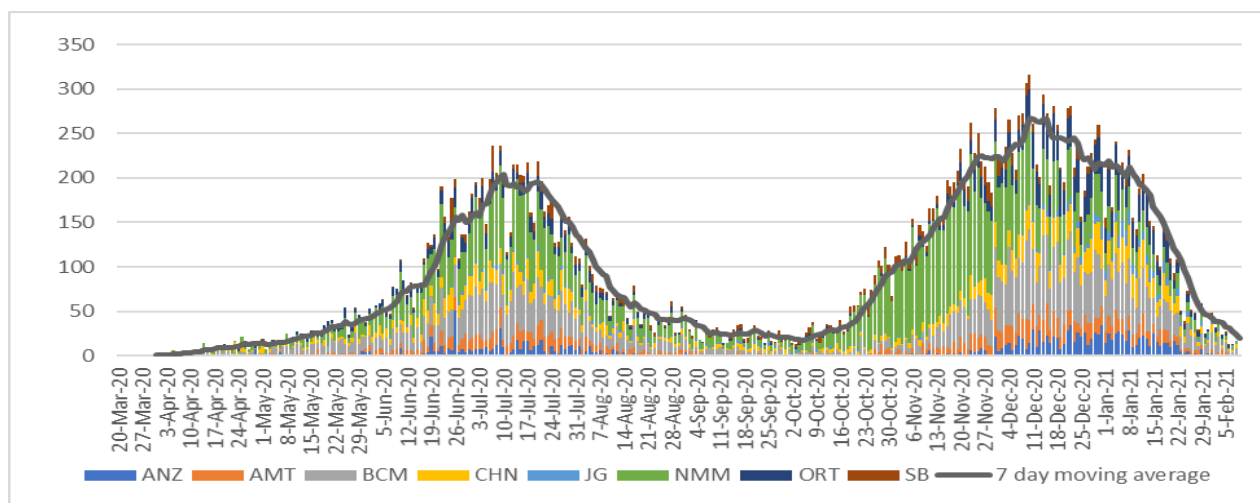


Fig. 21. No. of hospitalizations by date of admission for each district, as on 10th Feb. 2021

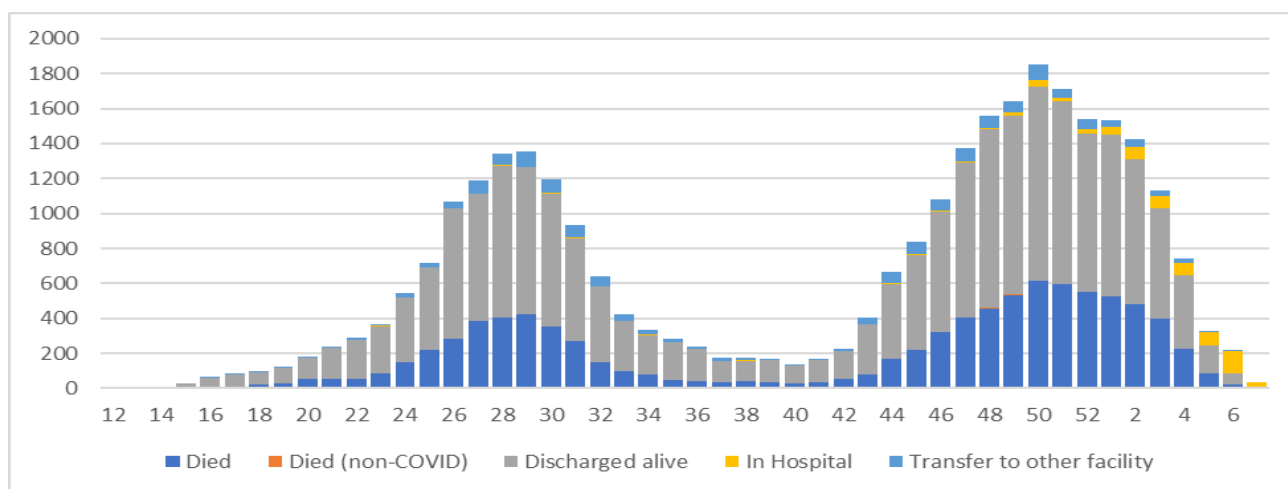


Fig. 22. Hospitalizations & outcomes by admission week, as on 10th Feb. 2021 (DATCOV)

The number of currently hospitalized patients remained high during the last part of the year and started to decline thereafter (Figure 20 & 21).

7.2. Co-morbidities among admitted cases and deaths

The most common co-morbidities among the hospitalized SARS-Cov-2 patients were hypertension (34.4%) and diabetes (23%) among hospitalized SARS-Cov-2 cases. Two other co-morbidities which were common include HIV (6.2%) and obesity (4.7%).

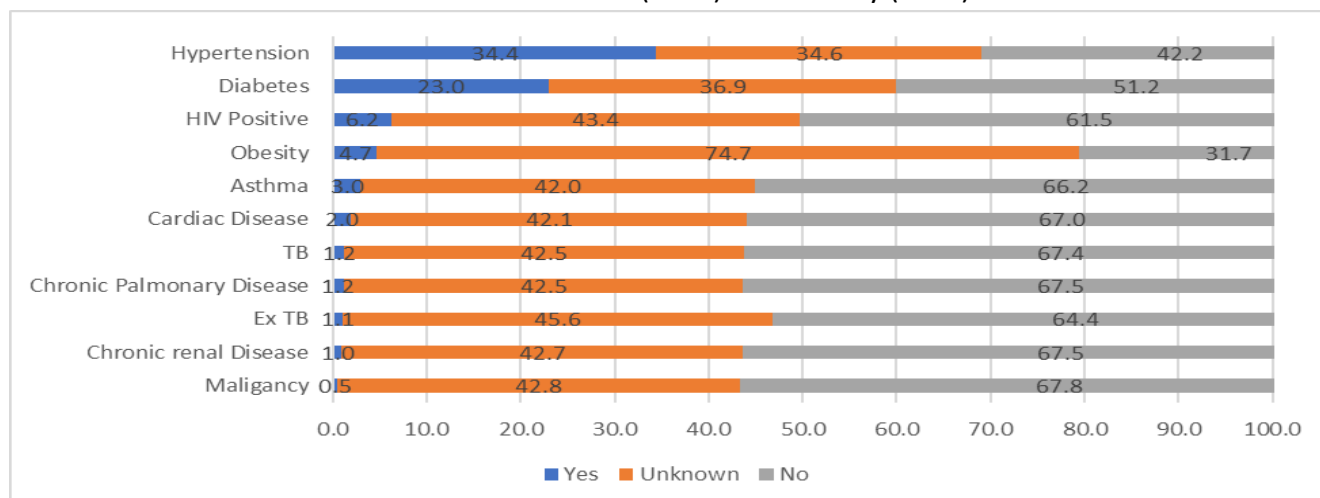


Fig. 23. Co-morbidities among SARS-Cov-2 hospitalizations, as on 08th Feb. 2021 (DATCOV)

A significant percentage of hospitalized patients did not have co-morbidities. The concern was those cases, which lacked information on the existence of the co-morbidities. This may have resulted in the under-estimation of the burden of co-morbidities among hospitalized SARS-Cov-2 cases.

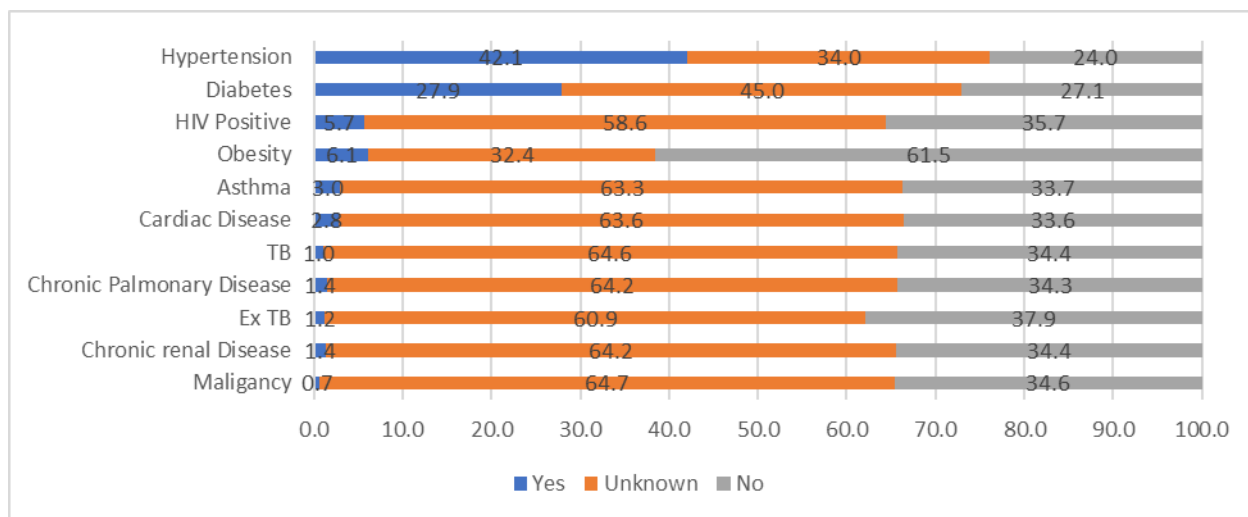


Fig. 24. Co-morbidities among SARS-Cov-2 cases who demised, as on 08th Feb. 2021 (DATCOV)

The most common comorbidities among those cases that demised in the hospital include hypertension (42.1%) and diabetes (27.9%). Four other co-morbidities are obesity (6.1%), HIV (5.7%), cardiac diseases (2.8%), and asthma (3%).

8. CONCLUSION

The burden of disease remains high in nearly all the districts but gradually decreasing. This may be due to the impact of the public health interventions, which were implemented in all the districts. Nearly half of the active cases were from BC Metro, Chris Hani and Amathole; and a quarter of the active cases are from OR Tambo and Alfred Nzo. Unfortunately, the number of deaths have significantly increased with the increase in the number of cases.

There are key issues, which require improvement;

- Strengthen surveillance of SARS-Cov-2 including collection and testing of specimens
- Prioritize contact tracing and monitoring to minimize the spread of the infections
- Isolate positive cases and quarantine contacts to minimize transmission
- Promote the use of prevention measures against SARS-Cov-2, i.e. wearing of masks, social distancing, and frequent handwashing



3 577 773

No Screened



854 422

Total Lab Tests



193 041

Positive Cases



179 984

Recoveries



11 028

Deaths

DISTRICT	TOTAL SCREENED	TOTAL TESTED	TOTAL CASES	RECOVERIES	DEATHS	ACTIVE CASES	AREAS
ALFRED NZO	694 706	29 469	7 888	7 348	412	128	Badibanise, Bhakubha, Bizana, Brooksnek, Cedarville, Chithwa, Dutyini, Emanxweni, Ezinteteni, Kokstad, Lucingweni, Matatiele, Mount Ayliff, Mount Frere, Ndlantana, Ngcingo, Ntabakhulu, Sugar Bush, Tabankulu
AMATHOLE	658 126	76 924	19 179	17 876	1082	221	Adelaide, Alice, Bolotwa, Butterworth, Cathcart, Centane, Cuba, Debe Nek, Dikana, Elliotdale, Ethafeni, Frankfort, Fort Beaufort, Ibika, Idutywa, Keiskammahoek, Willowdale, Lower Mbangcolo, Debe Nek, Mgababa, Nyaniso, Peddie
BUFFALO CITY METRO	210 367	123 058	38 478	36 004	2315	159	Abbottsford, Amalinda, Beacon Bay, Bisho, Braelyn, Buffalo Flats, Dimbaza, Duncan Village, East London, Ginsberg, Gonubie, Greenfields, Haven Hills, King William's Town, Mamata, Mdantsane, Masingata, Mantlaneni, Nahoon, Ndevana, Needs Camp, Parkside, Selbourne, Sunnyridge, Sunset Bay, Tshatshu, Vincent, West Bank, Zwellitsha
CHRIS HANI	515 346	60 561	19 363	17 341	1474	548	Bankies, Dordrecht, Dukathole, Ekunene, Ezibeleni, Kwanobuhle, Mwangengele, Madeira Park, New Rest, Ngcobo, Nkonyama, Popcorn Valley, Qebe, Qoqodala, Queenstown, Sigadleni, Vaalbank, Sada, Middleburg, Thornhill
JOE QAQABI	87 855	27 009	7 372	6 567	371	434	Aliwal North, Barkley East, Bhodi, Land Camp, Ugie, Inglewood, Maclear, Solomzi, Sunduza, Robberson, Venterstad
NELSON MANDELA METRO	856 883	159 592	55 081	51 701	3266	114	Algoa Park, Bethelsdorp, Bloemendal, Bluewater Bay, Booyens Park, Cotswold, Cuyler, Daleview, Despatch, Fernglen Port, Gelvandale, Govan Mbeki, Heath Park, Helenvale, Jacksonville, Joe Slovo, Kabega Park, Kamma Park, Kamvelihle, Khayaletu, Kleinskool, Kwa Dwesi, Kwa-Magxaki, Kwanobuhle, Kwanoxolo, KwaZakhele, Lovemore Heights, Missionvale, Motherwell, Mount Croix, New Brighton, Newton Park, North End, Port Elizabeth, Rowallan Park, Salt Lake, Sardinia Bay, Schauderville, Sherwood, Silvertown, Soweto-On-Sea, Steve Tshwete, Summerstrand, Tamboville, Uitenhage, Veeplaas, Walmer, West End, Westering, Zwide, Lorraine, Hillside, Daleview
OR TAMBO	265 613	82 332	22 320	20 717	1269	334	Gomora, Lutatweni, Machibi, Majola, Mandilini, New Payne Nggeleni, Ntsimbini, Old Payne, Libode, Lusikisiki, Mqanduli, Tombo, Marhewini, Mpikwana, Bhongweni, Ciben, Flagstaff, Magcakeni, Ngangelizwe, Ngqanda, Tyevelana, Pollar Park, Tabase Mission, Slovo Park, Southernwood, Waterfall Park, Zandukwana, Zimbane, Ziphuzana
SARAH BAARTMAN	288 877	85 696	21 653	20 734	839	80	Aberdeen, Alexandria, Graaf-Reinet, Grahamstown, Jeffrey's Bay, Jourbertina, Humansdorp, Parson, St. Francis Bay, Kirkwood, Lotusville, Bergendal, Bratenfel, Joza, Santaville, Somerset East, Thornhill, Willomore
IMPORTED*	-	0	599	598	0	1	Bloemfontein, Ceres, Cape Town, Unoon, Fishoek, George, Green Point, Gugulethu, Hout Bay, Langa, Khayelitsha, Knysna, Phillipi, Stellenbosch, Strand
PENDING	-	209 781	1108	1098	0	10	
GRAND TOTALS	3 577 773	854 422	193 041	179 984	11 028	2 029	

ACKNOWLEDGEMENTS

- The epidemiological and surveillance functions continue because of the strong partnership between the following stakeholders;
- World Health Organization with epidemiologists, biostatisticians, and technical support
- The National Institute for Communicable Diseases (NICD) provided the province with epidemiologists and technical support
- The data analyst from TB/HIV Care has supported data management, mapping of the cases and other functions in the department
- Right to Care assists in mapping the cases in different areas in the province
- Centre for Disease Control (Atlanta-Pretoria) provided the Department with an epidemiologist and a statistician to support the province
- The Department of Health, both the National and Provincial Department of Health re-purposed the employees to focus on the control and prevention of the pandemic
- Laboratories; National Health Laboratory Services, Pathcare and Ampath for prompt and regular reporting of SARS-Cov-2 cases.

Appendix 1: Incidence rate by Eastern Cape Districts and week of specimen collection as of 31 December 2020 Week 2 is interim data is incomplete and has been excluded.

