

Daily Epidemiological Report for SARS-Cov-2

Report No. 334

Date Issued 03 Mar. 2021 @22h00

1. PURPOSE

The report provides a descriptive analysis of SARS-Cov-2 related cases and deaths, and hospitalizations in the Eastern Cape Province, as of 03 Mar. 2021.

2. HIGHLIGHTS

2.1. New cases, active cases and recoveries

- In the past 24 hours, 31 new cases were reported, where the Nelson Mandela Metro, Buffalo City Metro and Joe Gqabi accounted for the majority (61,2%) and the remaining 5 districts A Nzo, Amathole, Chris Hani, OR Tambo and S Baartman accounted for 39%.
- Of the 273 active cases, more than 68% were from Amathole, BC Metro, Chris Hani and NM Metro; with the remaining 4 districts accounting for less than 40% of the active cases.
- The overall provincial recovery rate was 94%. All the districts reported a recovery rate greater than 90%.

2.2. SARS-Cov-2 related deaths

- In the last 24 hours, 5 deaths were reported; all occurring in the last 48 hours. Of the 5 deaths, 2 were reported from NM Metro, 2 from OR Tambo and 1 from Buffalo City Metro.
- The case fatality rate was 5.8%, with a CFR of 6.3% among males and 5.5% among the female population. Chris Hani has the highest case fatality rate, followed by BC Metro, NM Metro and OR Tambo.

- The number of post-mortem tests done by the public sector laboratories was 1,491. Forty-seven percent (46,8%) of the specimens tested positive for SARS-Cov-2. Eighty-three per cent (82,6%) of the tests were done in Alfred Nzo, Chris Hani and Joe Gqabi.

2.3. Hospitalizations and outcomes

- Of all the hospitalized cases, 64,1% of hospitalized patients were discharged alive and 65,7% of the reported discharges were from the public sector.
- Thirty percent (29,8%) of hospitalized cases demised due to SARS-Cov-2 related causes and 76,0% of those reported deaths occurring in public sector facilities.
- Of the 296 current admissions, 69,9% were admitted in the general ward, 12,8% in ICU and 3,4% in High Care. And 28,7% of current admissions were on oxygen and 5,1% were on ventilation.

2.4. Healthcare workers

- The number of healthcare workers who tested positive for SARS-Cov-2 was **11,781** and **304** demised (the case fatality rate was 2.6%). The increase in the number of cases is related to an improved reporting of cases.
- Nurses were the most affected, followed by doctors and clinical associates. **There is an increase in the positivity rate among healthcare workers in the metros.**

2.5. Conclusion

The burden of disease has decreased significantly during the January to February period. There were fewer new cases, reduced active cases, deaths and hospitalizations. There is an anticipation that public health interventions including vaccination may minimize the transmission rates in the province and the country.

The State continues to promote compliance to non-pharmaceutical interventions remains a central strategy in preventing the further spread of infections in communities.

3. SARS-Cov-2 CASES & DEATHS

3.1. Summary of all cases and deaths

The number of new cases was **31** and **5** deaths (all deaths occurring in the last 48 hours). Of the 5 deaths, 2 were reported from NM Metro, 2 from OR Tambo and 1 from Buffalo City Metro. The cumulative number of cases and deaths were **193,982** and **11,305** respectively.

	No. of cases	New Cases	Total	%	Deaths	New Deaths		Total	CFR
						*Newly Reported	**Newly occurred		
Male	76672	10	76682	39.5	4826	0	2	4828	6.3
Female	117263	21	117284	60.5	6474	0	3	6477	5.5
Unknown	16	0	16	0.0	0			0	0.0
Total	193951	31	193982	100.0	11300	0	5	11305	5.8

* Deaths which occurred more than 48 hours ago ** Deaths which occurred within the last 48 hours of reporting

The provincial case fatality rate (CFR) was 5.8%, with a CFR of 6.3% among males and 5.5% among the female population.

District	Cases	New Cases	Total Confirmed	Recoveries	Deaths	New Deaths		Total Deaths	CFR%	Recovery Rate	Active Cases
						*Newly Reported	**Newly occurred				
Alfred Nzo	7963	1	7964	7522	428	0	0	428	5,4	94,5	14
Amathole	19265	2	19267	18126	1097	0	0	1097	5,7	94,1	44
BC Metro	38675	5	38680	36283	2335	0	1	2336	6,0	93,8	61
Chris Hani	19483	4	19487	17924	1531	0	0	1531	7,9	92,0	32
Joe Gqabi	7467	5	7472	7050	408	0	0	408	5,5	94,4	14
NM Metro	55247	9	55256	51900	3305	0	2	3307	6,0	93,9	49
OR Tambo	22412	3	22415	21044	1354	0	2	1356	6,0	93,9	15
S Baartman	21718	1	21719	20859	842	0	0	842	3,9	96,0	18
Imported	600	1	601	598	0	0	0	0	0,0	99,5	3
Unspecified	1121	0	1121	1098	0	0	0	0	0,0	97,9	23
E. Cape	193951	31	193982	182404	11300	0	5	11305	5,8	94,0	273

* Deaths that occurred more than 48 hours ** Deaths which occurred within the past 48 hours of reporting

In the past 24 hours 31 new cases were reported, where the Nelson Mandela Metro, Buffalo City Metro and Joe Gqabi accounted for 19 cases (61,2%) and the remaining 5 districts A Nzo, Amathole, Chris Hani, OR Tambo and S Baartman accounted for 12 cases (39%).

Of the 273 active cases, Amathole accounted for (16,1%), Buffalo City Metro (22,3%), NM Metro (17,9%), Joe Gqabi (5,1%), Chris Hani (11,7%), OR Tambo (5,5%), Sarah Baartman (6,6%) and A Nzo (5.1%). The overall provincial recovery rate was 94%. All the districts reported a recovery rate greater than 90%.

3.2. Newly diagnosed cases

The daily number of reported cases by the date of stool collection (Figure 1) has shown a steady decrease since mid-February, with a slight increase around the 23rd of February. Since then it has continued to decrease with a drastic increase around the 02nd of March that can be explained by 25 cases which were transferred from KwaZulu Natal.

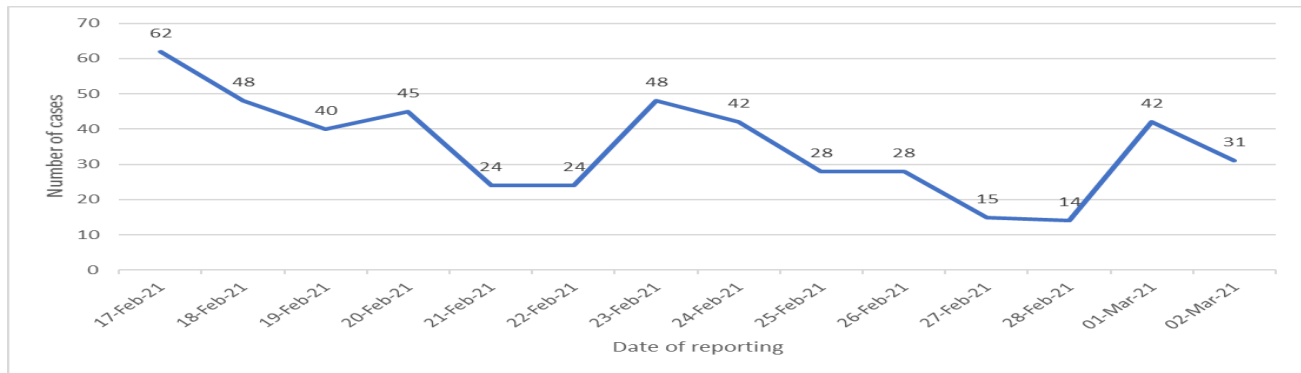


Fig. 1. No. of daily reported SARS-Cov-2 cases by date of collection, as of 03 Mar. 2021

The figure below provides the 7-day moving average of newly reported cases by district comparing a period from the 16th to 01 March 2021, i.e. 534 cases. The number of newly reported continues to decrease over time.

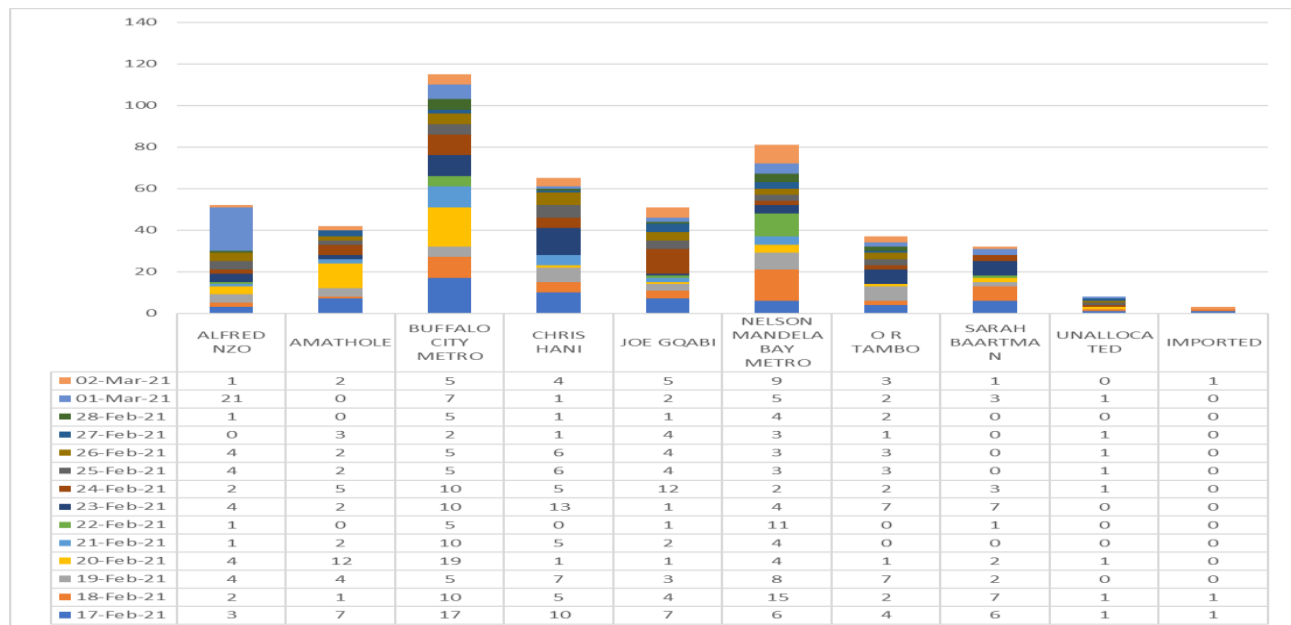


Fig. 2. No. of daily SARS-Cov-2 cases by district and date of collection, as of 03 Mar. 2021

The highest number of newly reported cases were from Buffalo City Metro followed by Nelson Mandela Metro, Chris Hani, OR Tambo and A Nzo.

4. SARS-Cov-2 LAB TESTS & RESULTS

4.1. Test Results by Laboratory

The number of SARS-Cov-2 tests conducted by both private and public laboratories was 884,430. Sixty percent (62,5%) of the tests were conducted in the public sector 37,5% in the private sector laboratories.

	Private	Public	Total	Percentage (%)
Alfred Nzo	2449	27663	30 112	3,4
Amathole	8339	70267	78 606	8,9
BC Metro	30821	94705	125 526	14,2
Chris Hani	6866	55291	62 157	7,0
Joe Gqabi	1281	26456	27 737	3,1
NMB Metro	35290	128589	163 879	18,5
OR Tambo	16631	66793	83 424	9,4
Sarah Baartman	3764	83420	87 184	9,9
Unclassified	225805	0	225 805	25,5
Eastern Cape	331246	553184	884 430	100,0

The number of tests represents 10% of all the SARS-Cov-2 tests in South Africa. Thirty-three (32,7%) of the tests were the Metros in the province. In the report of the 02nd March, there was an error where the number of tests in private sector were over-estimated.

4.2. Antigen Testing

Eleven percent (11%) of the 71,048 tests done tested positive for SARS-Cov-2. These tests constitute 14,0% of the tests in the country.

	Negative	Positive	Total	Percentage (%)	Positivity Rate (%)
A Nzo	6469	920	7389	10,4	12,5
Amathole	3478	600	4078	5,7	14,7
BC Metro	8484	1598	10082	14,2	15,9
Chris Hani	6724	1136	7860	11,1	14,5
Joe Gqabi	2395	465	2860	4,0	16,3
NM Metro	19754	1269	21023	29,6	6,0
OR Tambo	11457	1344	12801	18,0	10,5
Sarah Baartman	4656	299	4955	7,0	6,0
Total	63417	7631	71048	100,0	10,7

The Nelson Mandela Metro accounted for 29,6%, followed by OR Tambo (18%), Buffalo City Metro (14,2%), Chris Hani (14,5%) and Alfred Nzo (10,4%). The highest positivity rate observed was 16,3% in Joe Gqabi, followed by 15,9% in BC Metro, 14,7% in Amathole, and 14,5% in Chris Hani. The lowest positivity rate was seen in both NM Metro and Sarah Baartman.

4.3. Tests by age group and sex

Analysis of the tests, which were conducted shows that the majority of the tests, were among the economically active age group (20 to 59 years), i.e. 60,9%.

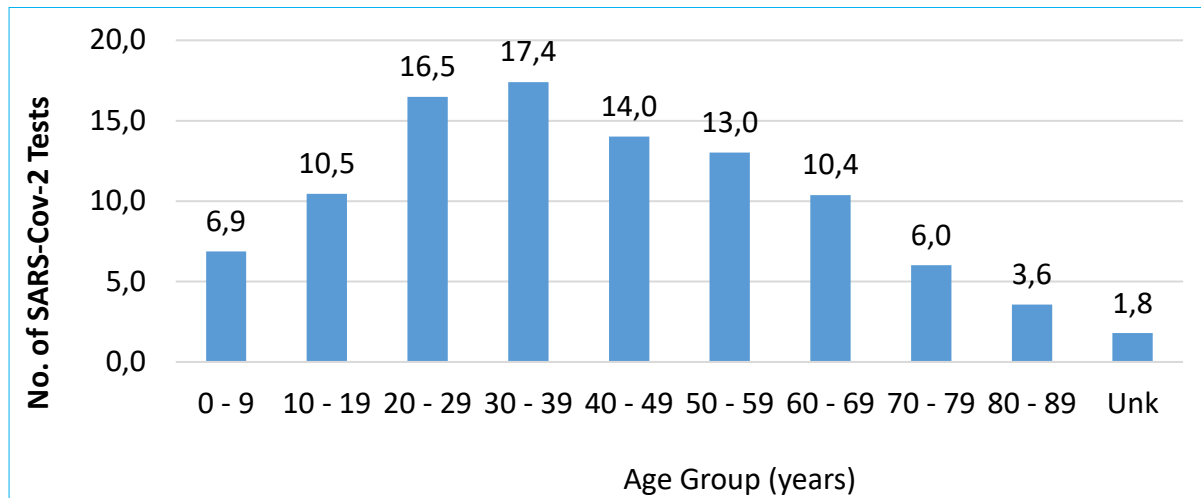


Fig. 3. Number of SARS-Cov-2 tests by age group in Public Sector Labs, as of 21st Feb. 2021

The younger population and the elderly constitute less than 40% of the population that was tested.

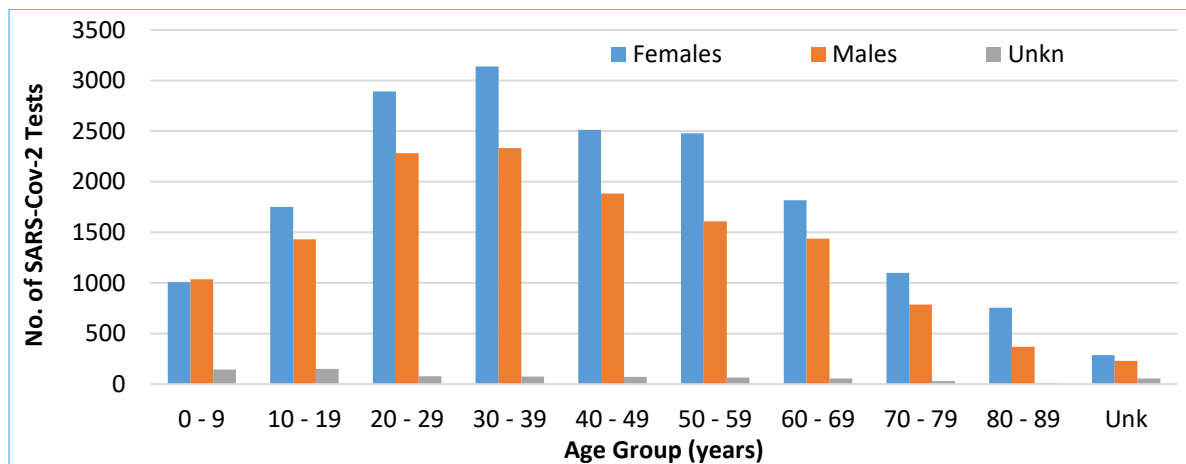


Fig. 4. No. of SARS-Cov-2 public sector tests by age group and gender, as of 21st Feb. 2021

The female population accounted for 55,7% and male population accounted for 42,0%, and 2,3% lacked information on gender.

4.4. Turnaround Time

The table below provides the turnaround time in both public and private laboratories.

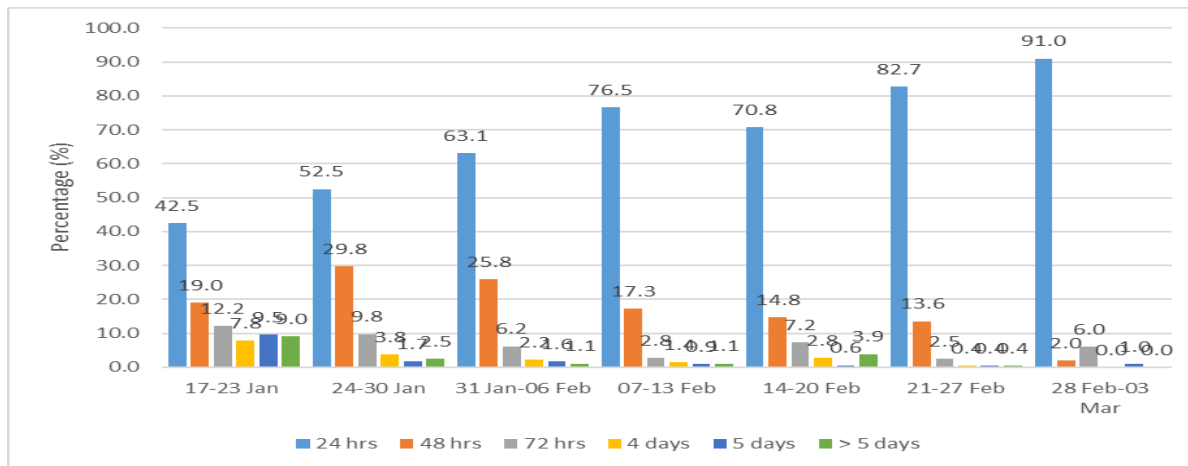


Fig. 5. Turnaround time for SARS-Cov-2 positive results by week as of 03 Mar. 2021

The laboratory results that were available within 24 hours of specimen collection have increased by 12,3%, i.e. from 82,7% in the previous week to 91,0% in the current week. There was a 3,4% decrease in the results which were available within 48 hours, i.e. from 96,3% to 93% during the same period.

4.5. The 7-day moving average of SARS-Cov-2 tests & positivity rate

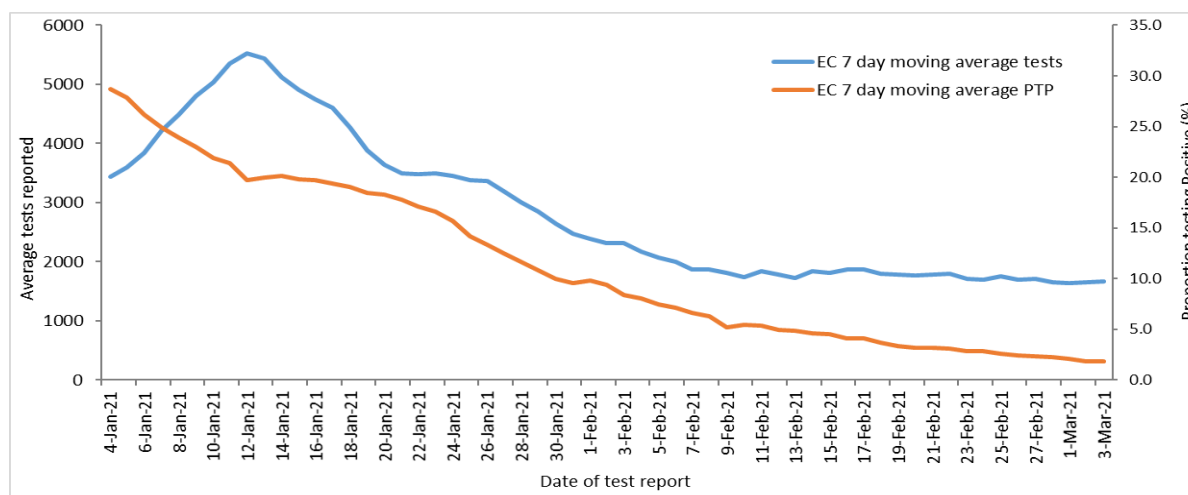


Fig. 6. 7-day moving average for SARS-Cov-2 tests and positivity rate, as of 03 Mar. 2021

The number of SARS-Cov-2 tests has decreased by 4,6% from 1,747 on the 25th to 1,666 on the 03rd of March 2021. Similarly, the positivity rate has decreased by 26,9% from 2,6% to 1,9% during the same period.



Fig. 7. The 7-day moving average for SARS-Cov-2 tests and testing rate, as of 03 Mar. 2021

The average testing rate has decreased by 15,4% from 26 tests conducted per 100,000 on 25th February to 22 tests per 100,000 on 03rd March 2021.

5. ACTIVE CASES, INCIDENCE & POSITIVITY RATE

5.1. Active SARS-Cov-2 cases and the cumulative positivity rate

District	Population Estimates	Number of Tests	SARS-Cov-2 Cases (ALL)	Active SARS-Cov-2 Cases	SARS-Cov-2 per 100,000 (Active)	Cumulative Positivity Rate
Alfred Nzo	827826	30,112	7964	14	1.7	26.4
Amathole	798067	78,606	19267	44	5.5	24.5
BC Metro	798798	125,526	38680	61	7.6	30.8
Chris Hani	733743	62,157	19487	32	4.4	31.4
Joe Gqabi	343075	27,737	7472	14	4.1	26.9
NM Metro	1210803	163,879	55256	49	4.0	33.7
OR Tambo	1520922	83,424	22415	15	1.0	26.9
S Baartman	480223	87,184	21719	18	3.7	24.9
Imported		0	601	3	0.0	0.0
Unspecified		225,805	1121	23	0.0	0.5
E.Cape	6713457	884,430	193982	273	4.1	21.9

The incidence of active cases was 4,1 cases per 100,000 population. Six (6) districts have an incidence that is less than 5% per 100,000 and 2 districts have more than 5 per 100,000 but less than 10 per 100,000.

The cumulative positivity rate was 21,9%. Three (3) districts reported a cumulative positivity rate above 30%.

5.2. Incidence of SARS-Cov-2 cases

The incidence of SARS-Cov-2 has significantly declined in all districts. Since week 2 of the year, there was a decrease in incidence in all districts.

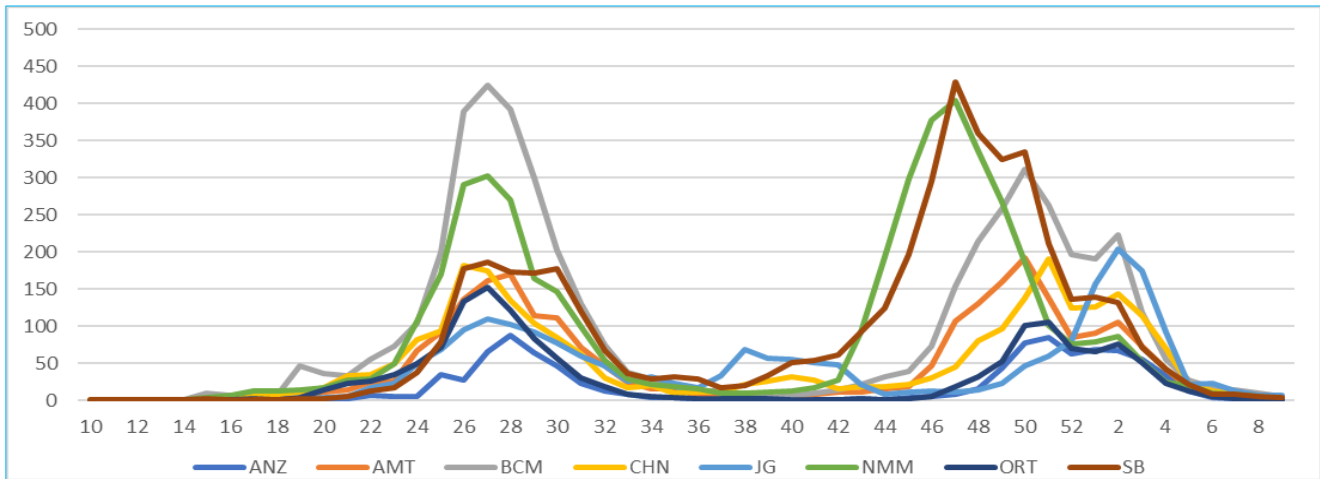


Fig. 8. Incidence of SARS-Cov-2 cases by epidemiological week, as of 02 Mar. 2021

In the past 7 days, the incidence of SARS-Cov-2 decreased from 5.8 cases per 100,000 on the 25th February to 4,1 cases per 100,000 on the 03rd March 2021 (Figure 9).

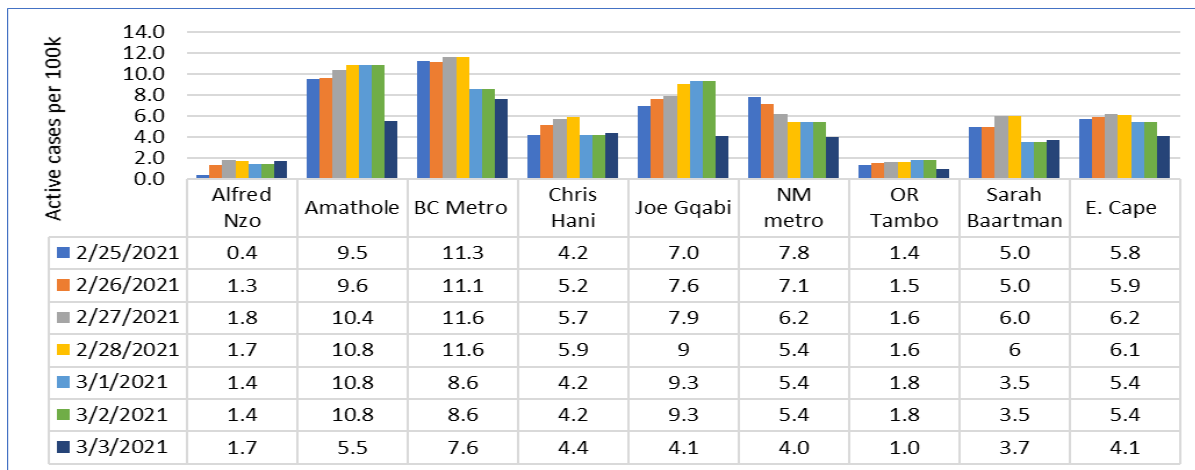


Fig. 9. Incidence of active SARS-Cov-2 (per 100,000) by district date, as of 03 Mar. 2021

The incidence of SARS-Cov-2 was less than 5 cases per 100,000 in 6 districts, i.e. Alfred Nzo, Amathole, OR Tambo, Chris Hani, Joe Gqabi and S Baartman. Only 2 districts had more than 5 cases but less than 10 cases per 100,000.

Poor reporting of the SARS-Cov-2 outcomes, i.e. recoveries and active cases during the weekend may have contributed to the over-estimation of the incidence of SARS-Cov-2 cases.

5.3. Recovery Rate (%)

The figure below provides the recovery rate over 7 days for each district. The number of recoveries and the recovery rate has significantly increased in all the districts.

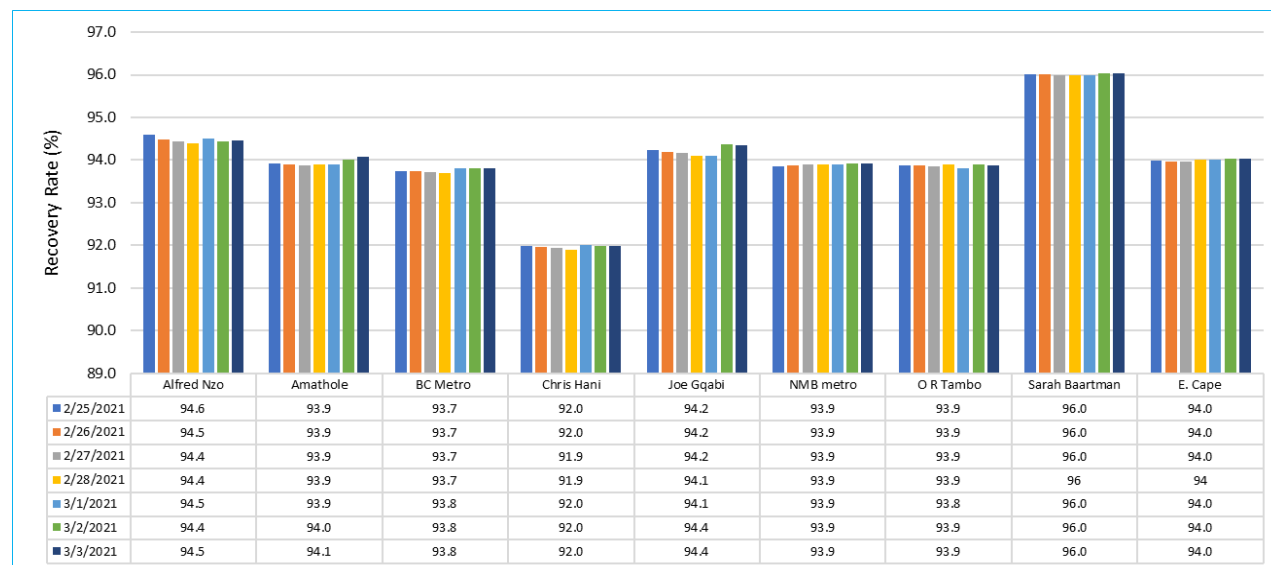


Fig. 10. SARS-Cov-2 Recovery Rate (%) by districts, as of the 03 Mar. 2021 (N=182,404)

The provincial recovery rate remained above 90% over the past 7 days. In the past 7 days, all the districts reported a recovery rate above 90%. The recovery rate has remained at 94,0% for the past 7 days. This may be due to a fewer number of new cases and recoveries, which were reported within that period.

5.4. Mapping of active cases, recoveries and deaths

The map shows the distribution of active cases, recoveries and deaths related to SARS-Cov2 in the province.

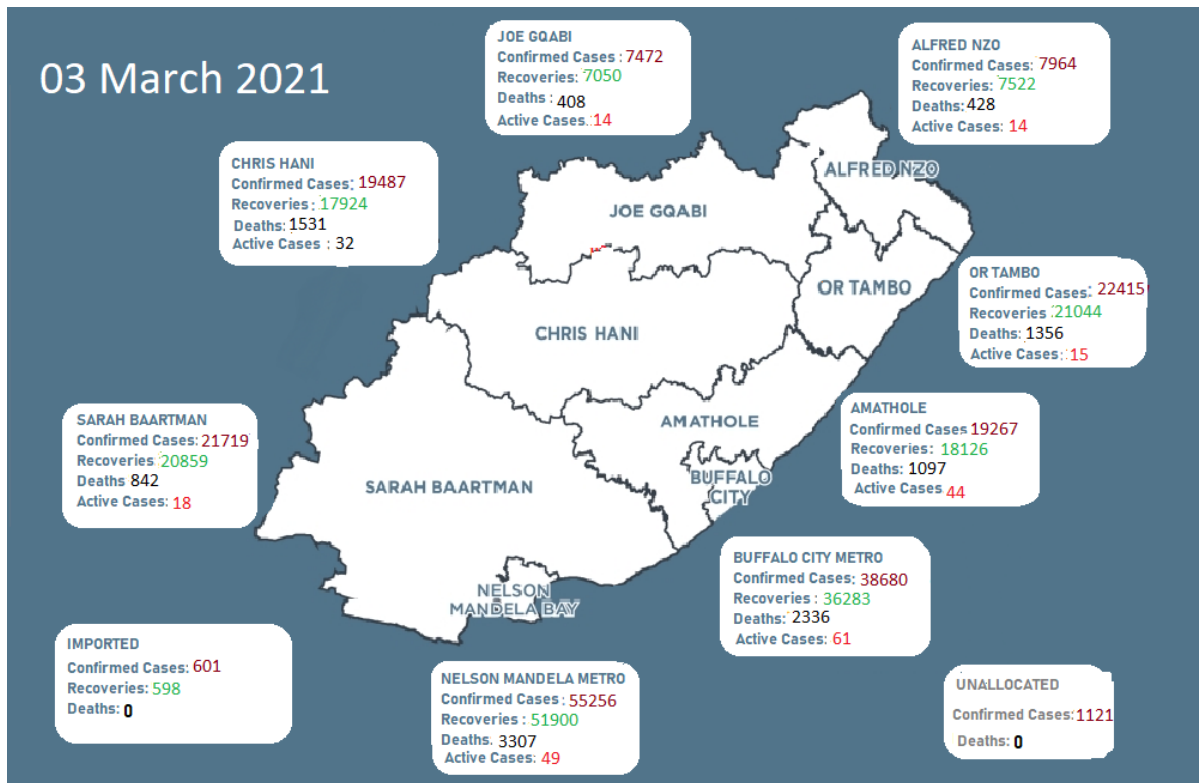


Fig. 11. Number of Covid-19 cases, recoveries and deaths, as of 03 Mar. 2021

6. SARS-COV-2 CASES AND 7-DAY MOVING AVERAGE

The graph below depicts the total number (including cumulative) of cases and the 7-day moving average.

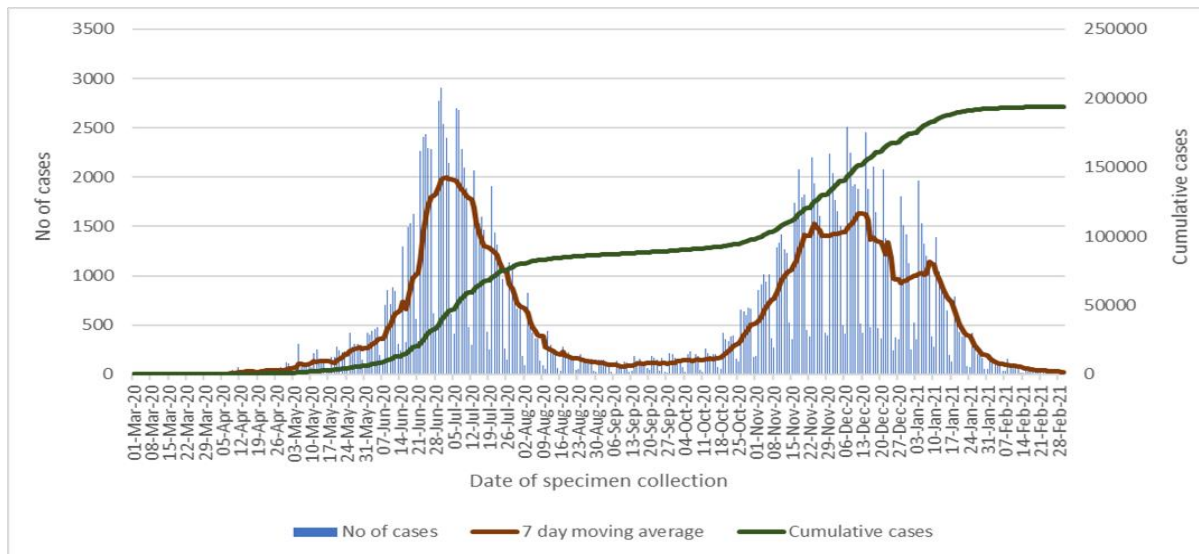


Fig. 12. 7-day moving average for Covid-19 cases by date of collection, as of 03 Mar. 2021

The number of daily newly diagnosed cases increased from the second half of October and peaked in mid-December, and then decreased until to date. The number of cumulative cases appears to have stabilized (known as flattening of the curve).

7. SARS-Cov-2 RELATED MORTALITY

7.1. SARS-Cov-2 related deaths

The table below provides the total number of cases, deaths and mortality rate by the month.

Month	Cases	Deaths	Percent (%)	Case Fatality Rate	Mortality Rate (per 100,000)
Mar-20	13	1	0.0	7.7	0.0
Apr-20	638	35	0.3	5.5	0.5
May-20	3282	285	2.5	8.7	4.2
Jun-20	23793	1036	9.2	4.4	15.4
Jul-20	50290	2033	18.0	4.0	30.3
Aug-20	8279	668	5.9	8.1	10.0
Sep-20	2991	213	1.9	7.1	3.2
Oct-20	8625	287	2.5	3.3	4.3
Nov-20	33706	1709	15.1	5.1	25.5
Dec-20	42472	2775	24.5	6.5	41.3
Jan 21	18154	1909	16.9	10.5	28.4
Feb 21	1700	204	1.8	12.0	3.0
Mar 21	39	5	0.0	12.8	0.1
Unknown	0	145	1.3	0.0	2.2
Total	193982	11305	100.0	5.8	168.4

Twenty-five percent (24,5%) of the deaths occurred in December, and 16,9% in January, and 1,8% in February. The Case Fatality Rate in February was 12% and 10,5% in January, and 6,5% in December. During the second wave until to date, the highest mortality rate was seen in December, followed by January and November.

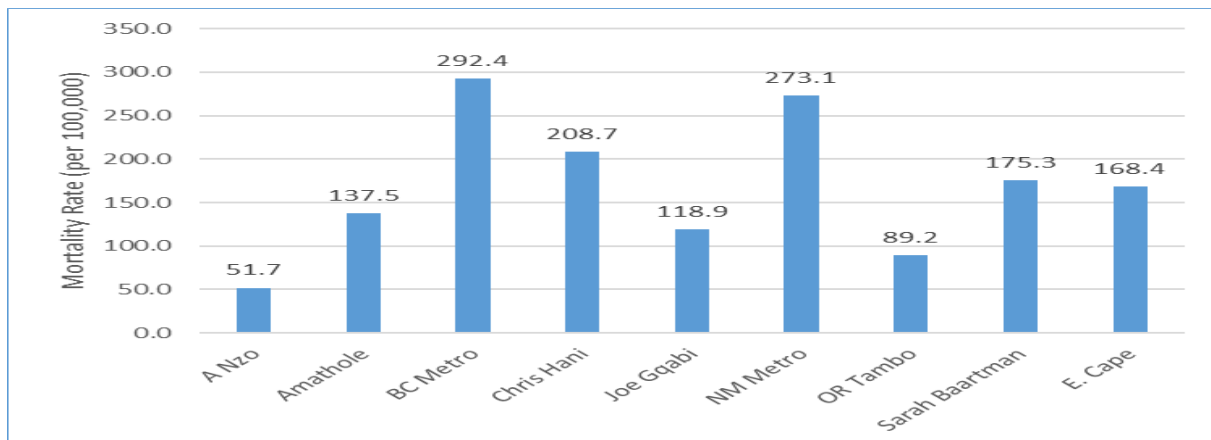


Fig. 13. SARS-Cov-2 related mortality per 100,000 by district, as of 03 Mar. 2021

The mortality rate related to SARS-Cov-2 was 168,4 deaths per 100,000 populations. The highest mortality rate was observed in Buffalo City Metro (292,4 deaths per 100,000) followed by Nelson Mandela Metro (273,1 deaths per 100,000), Chris Hani (208,7 per 100,000) and Sarah Baartman (175.3 per 100,000).

7.2. Number of reported SARS-Cov-2 related deaths

The figure below depicts the daily deaths and the cumulative number of deaths.

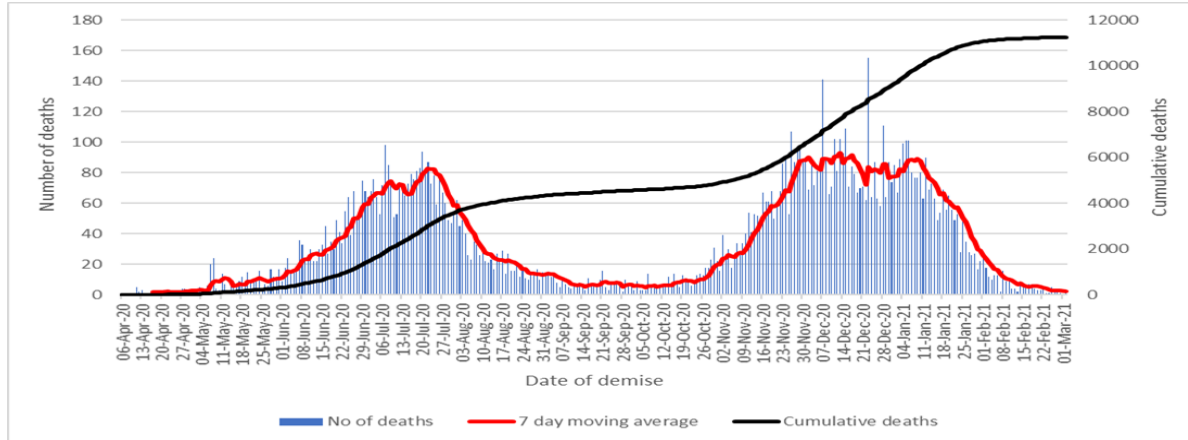


Fig. 14. Daily and cum. SARS-Cov-2 related deaths by date of demise, as of 03 Mar. 2021

The number of daily deaths increased since May 2020 and peaked on the 20th July 2020, then rapidly declined in August and October. In the last week of October, the number of deaths increased and peaked in mid-December. The number of deaths continues to decline from the first week of January.

7.3. Case Fatality Rate by district

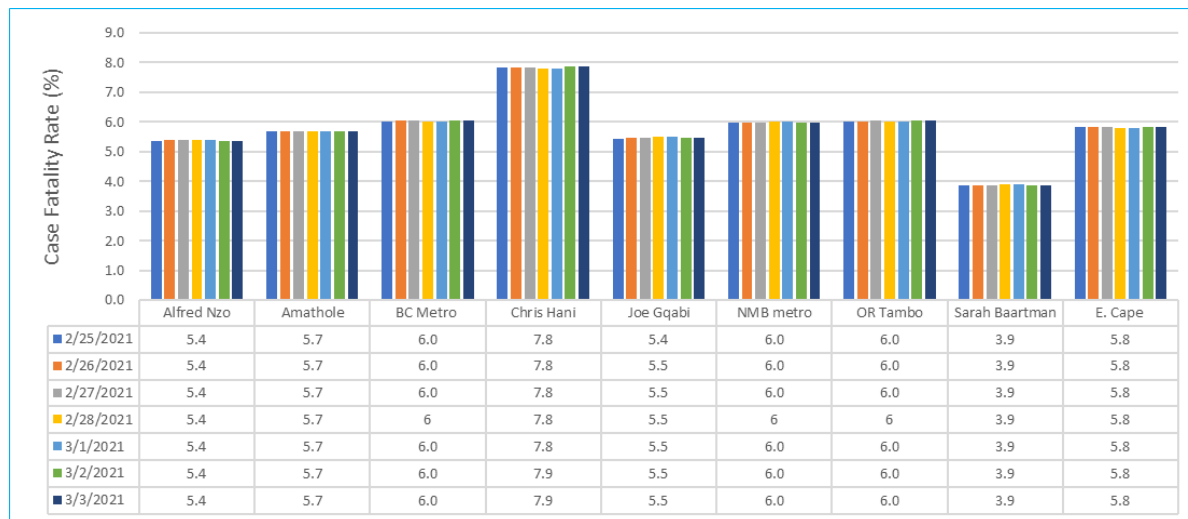


Fig. 15. SARS-Cov-2 Case Fatality Rate (%) by district, as of 03 Mar. 2021 (N=11,305)

Over the past 7 days, the case fatality rate has remained unchanged. The Chris Hani district reported the highest case fatality rate of 7,9%, followed by Buffalo City Metro (6.0%), Nelson Mandela Metro (6.0%), OR Tambo (6.0%), Amathole (5.7%), Joe Gqabi (5,5%), Alfred Nzo (5.4%) the lowest being Sarah Baartman by 3.9%.

7.4. Case Fatality Rate by age group

The figure below provides the case fatality rate for both males and females.

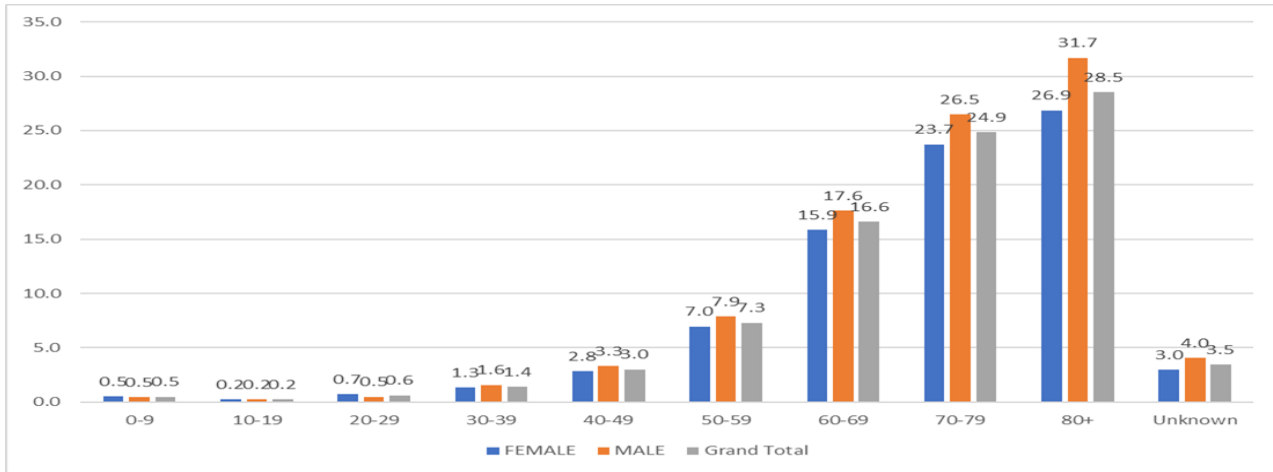


Fig. 16. SARS-Cov-2 related Case Fatality Rate (%) by age group, as of 03 Mar. 2021

The case fatality rate increases with increasing age. Since the beginning of the pandemic, the younger population had a low case fatality rate compared to the older population that had an increased case fatality rate. The male population had a higher case fatality rate compared to the female population.

7.5. Post-mortem testing

As of the 25th of February, 1,492 post-mortem tests were conducted from all districts.

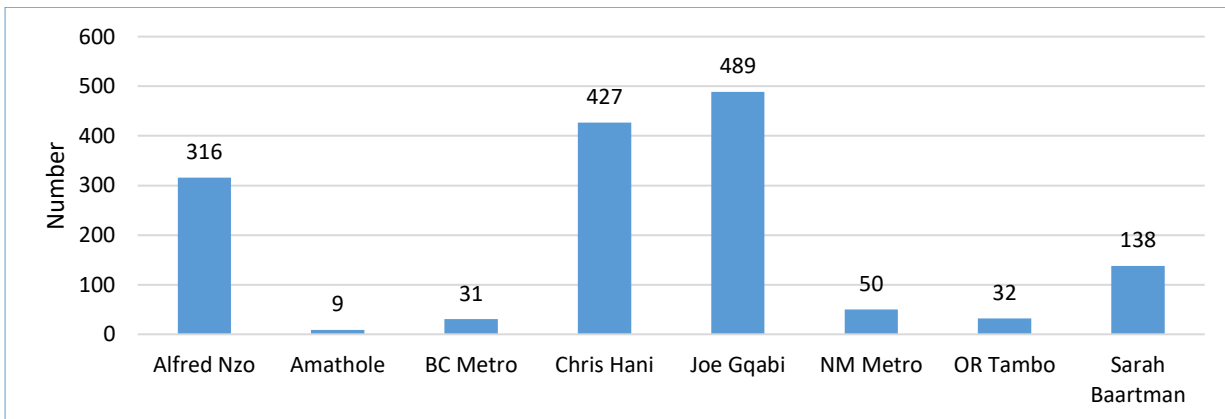


Fig. 17. No. of deaths with SARS-Cov-2 PMT done by district, as of 25th Feb. 2021 (N=1,492)

Three districts reported more than 300 post-mortem tests, i.e. Joe Gqabi, followed by Chris Hani and Alfred Nzo. Sarah Baartman reported more than 100 tests. The district with the lowest number of post-mortem tests was Amathole.

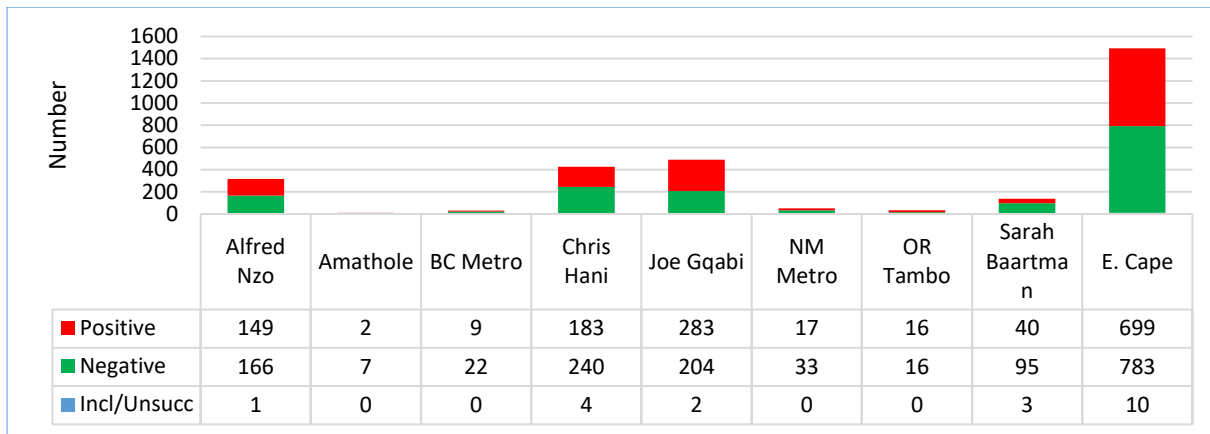


Fig. 17. Number of post-mortem test results by district, as of 25 Feb. 2020 (PMTs =1,492)
 The number of post-mortem tests done by the public sector laboratories was 1,491. Eighty-three per cent (82,6%) of the tests were done in Alfred Nzo, Chris Hani and Joe Gqabi.

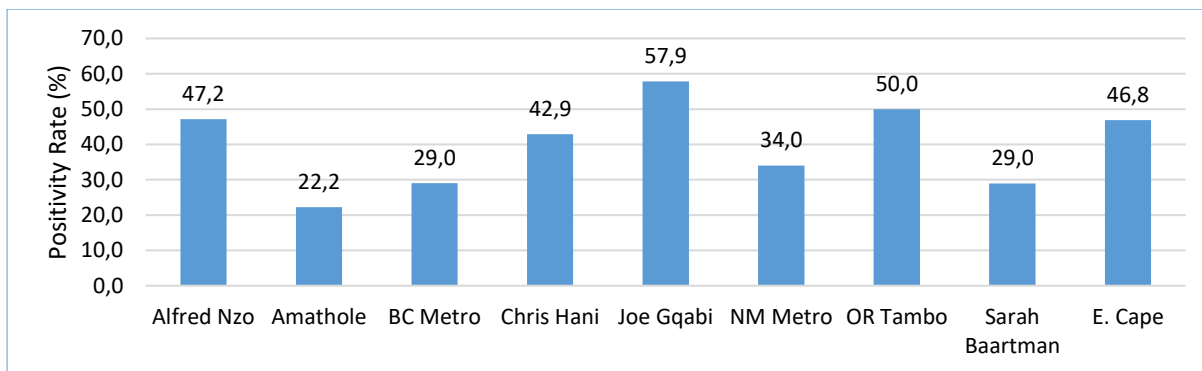


Fig. 18. Post-mortem SARS-Cov-2 positivity rate by district, as of 25th February 2021
 Forty-seven percent (46,8%) of the PMTs tested positive for SARS-Cov-2. Joe Gqabi and OR Tambo reported 50% and above positivity rate, followed by Chris Hani. The lowest positivity rate was observed in the Amathole district, which had the lowest number of PMTs done.

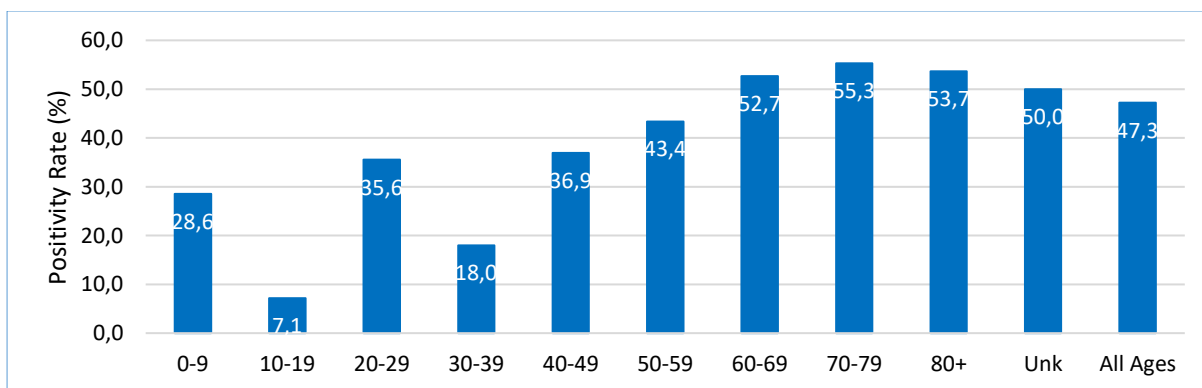


Fig. 19. SARS-Cov-2 post-mortem positivity rate by age group, as of 24th Feb. 2021
 Sixty-six percent (65,5%) of the post mortems were done among the elderly population from 60 years and above. The positivity rate among that age group was 50% and above.

7.6. Deaths by health facilities

The figure below provides the number of deaths by hospital or place. Only hospitals or places with a minimum of 24 deaths are included in the figure below. Nearly most of the hospitals including both private and public have reported a case or more, whether private or public.

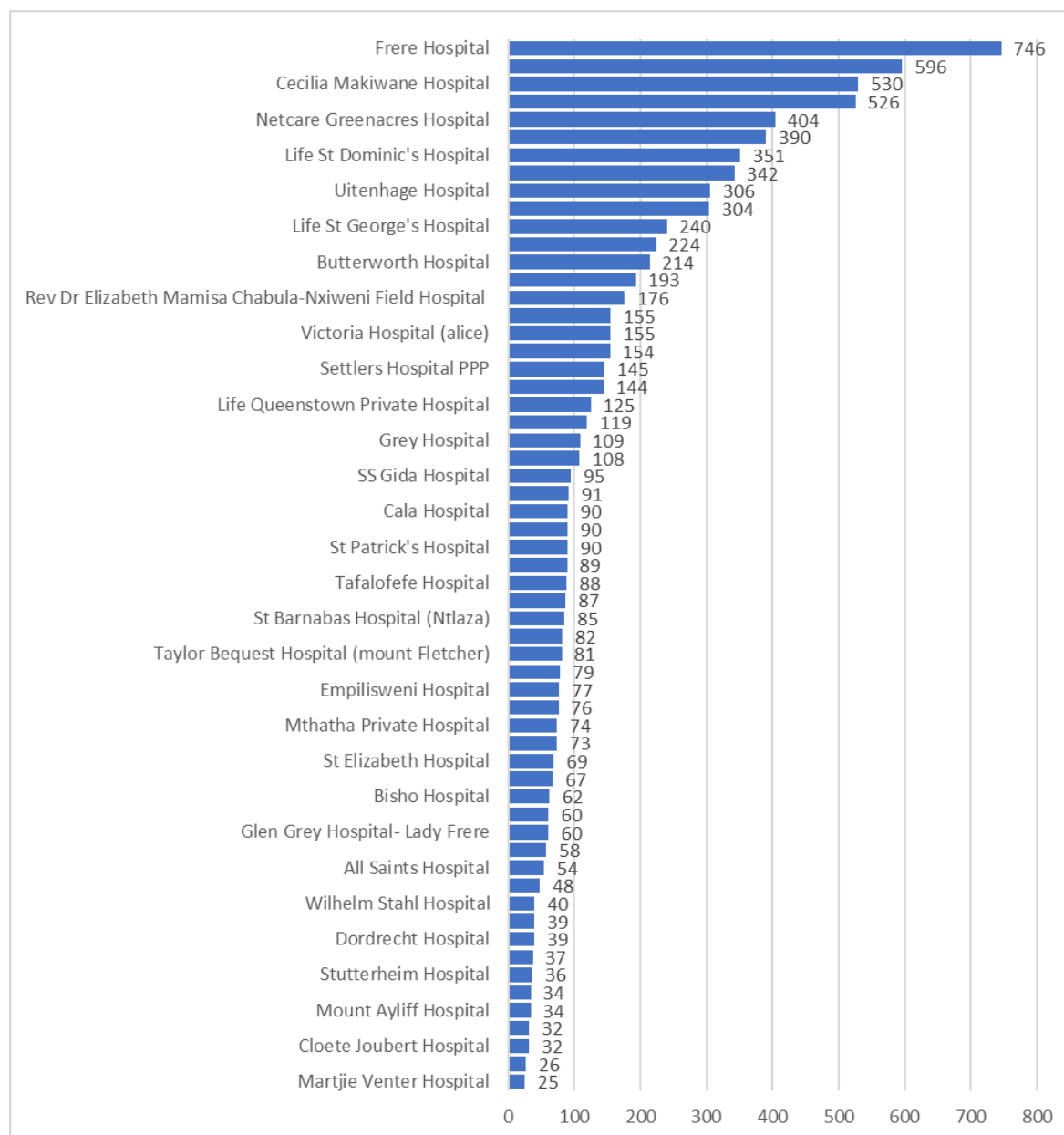


Fig. 20. No. of SARS-Cov-2 related deaths by the facility, as of 03 Mar. 2021

The majority of the deaths, which occurred in the province, occurred in 17 hospitals. The hospitals include Frere, Cecilia Makiwane, Dorah Nginza, Livingstone, Life St. Dominics, Netcare Greenacres, Mercantile, Uitenhage, Frontier, Mthatha Regional, Life St. Georges, Netcare Cuyler, Life EL Private, Life Queenstown, Butterworth and Rev. Dr. EM Chabula-Nxiweni Field Hospitals.

6. HEALTHCARE WORKERS

6.1. Cases and deaths among healthcare workers (HCWs)

As of 02nd March 2021, 11,781 HCWs tested positive for SARS-Cov-2 and 304 persons demised.

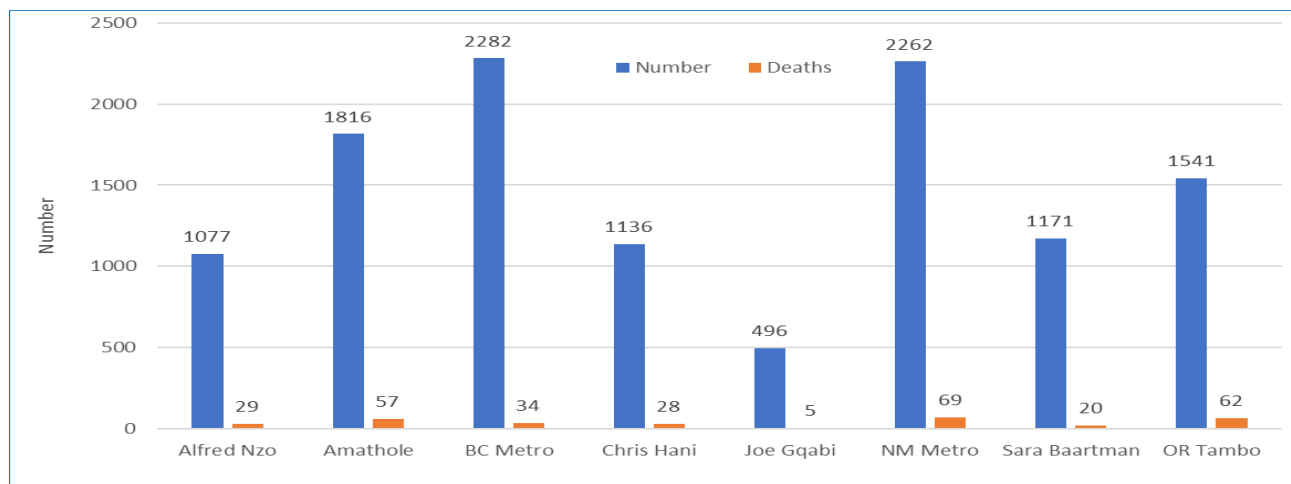


Fig. 21. SARS-Cov-2 positive Healthcare Workers, as on 02 Mar. 2021 (N = 11,781)

The number of healthcare workers who tested positive for SARS-Cov-2 in Buffalo City Metro was 2,282 (34 deaths), Nelson Mandela Metro 2,262 (69 deaths), Amathole 1,816 (57 deaths), Chris Hani 1,136 (27 deaths), OR Tambo 1,541 (62 deaths), Sarah Baartman 1171 (20 deaths) and Alfred Nzo (1074 cases, with 27 deaths).

6.2. SARS-Cov-2 Cases by job category

The table below provides the number of selected healthcare professionals employed by the State and SARS-Cov-2 cases by job categories, and the positivity rate of that job category.

	Number	Cases	Positivity Rate (%)
Admin	12434	774	6.2
Allied Professionals	3041	233	7.7
Doctors & Clinical Assoc	2369	440	18.6
Nurses	20650	4825	23.4
Emergency Medical Services	2498	293	11.7

The positivity rate among the nurses was 23,4%, followed by doctors and clinical associates (18,6%), allied professionals (7,7%), EMS (11,7%), and admin personnel (6,2%). The positivity rates among healthcare workers negatively affect patient safety, staff morale and confidence, and the capacity of the State to provide quality health services to the population.

6.3. Admissions of healthcare workers

The analysis of the admissions of the healthcare workers was 1,029 healthcare workers who admitted to the hospitals in the Eastern Cape. The source of the data was DATCOV.

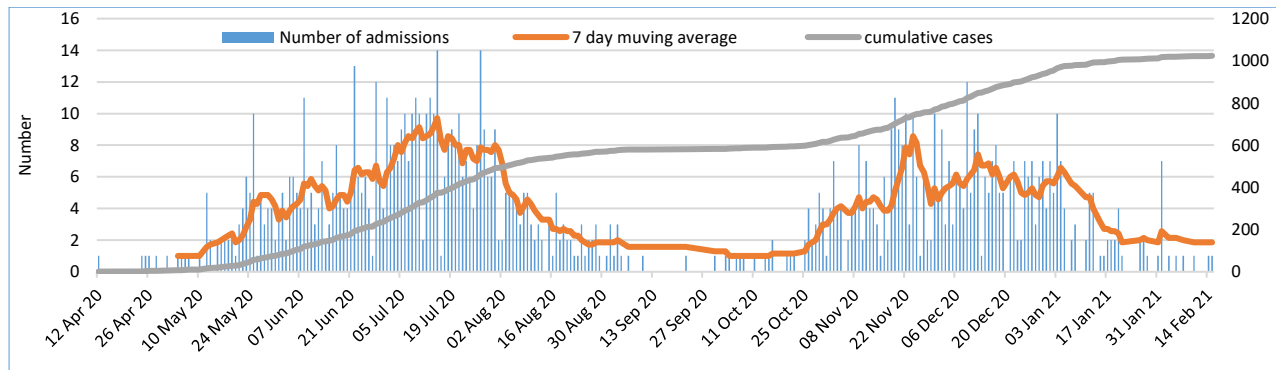


Fig. 22. No. of SARS-Cov-2 related admissions of healthcare workers, as of 19th Feb. 2021

The abovementioned figure shows the number of admissions, 7-day moving average and cumulative cases among healthcare workers. Figure 19 appear to mimic the epi-curve and admissions of the general population in both the first and the second waves.

6.4. Case Fatality Rate (%) among HCWs

The figure below provides the cases fatality rate among all healthcare workers.

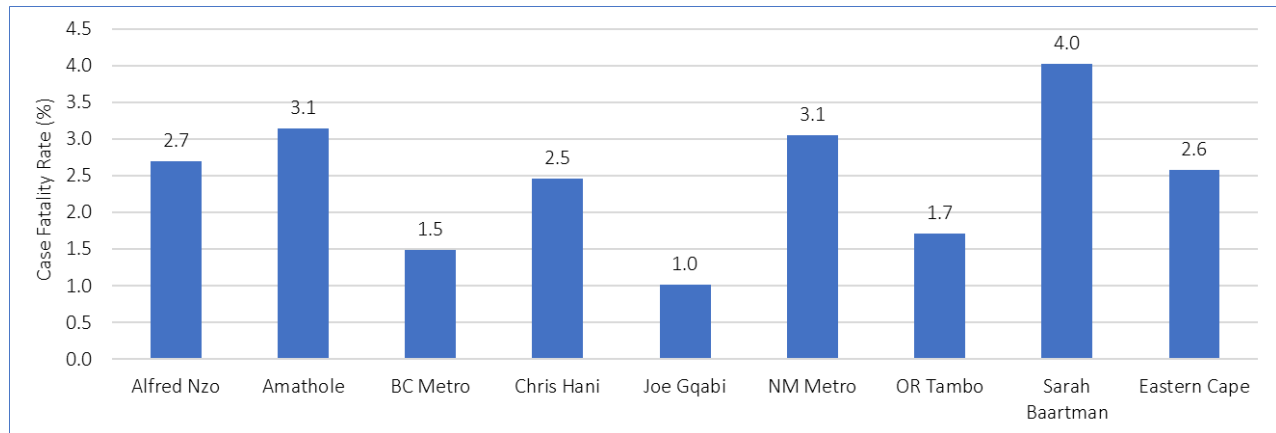


Fig. 23. SARS-Cov-2 Case Fatality Rate (%) among HCWs, as of 01 Mar. 2021 (N=304)

The case fatality rate among healthcare workers was 2.6%. The case fatality rate was above 1% in all the districts in the province. Sarah Baartman reported the highest case fatality rate, followed by Nelson Mandela Metro, Amathole, Alfred Nzo, Chris Hani and Buffalo City Metro. The case fatality rate of less than 2% was observed in three districts, i.e. Joe Gqabi, BC Metro and OR Tambo.

7. Hospitalization and outcomes

7.1. Admissions and outcomes

The cumulative number of SARS-Cov-2 hospitalizations is 31,388 (DATCOV). Fifty-nine percent (58,6%) of the hospitalizations occurred in the Metros. Twenty-one percent (20,6%) of the hospitalizations were from Chris Hani and OR Tambo.

District	Public	Private	Total	Percentage
Alfred Nzo	1679	93	1772	5.6
Amathole	2345	0	2345	7.5
Buffalo City Metro	4219	3093	7312	23.3
Chris Hani	2548	735	3283	10.5
Joe Gqabi	698	0	698	2.2
Nelson Mandela Bay Metro	6687	4395	11082	35.3
O R Tambo	2282	883	3165	10.1
Sarah Baartman	1593	138	1731	5.5
Total	22051	9337	31388	100

Of the reported hospitalizations, 22,051 (70,3%) occurred in public sector and 9,337 (29,7%) occurred in private sector health facilities.

Eastern Cape Total	Private	Public	Total
Died	2250	7127	9365
Discharged alive	6918	13211	20129
In Hospital	135	161	296
Transfer to other facility	34	1552	1586
ICU	38	0	38
High care	5	5	10
General	88	119	207
On Oxygen	34	51	85
Ventilated	13	2	15

Of all the hospitalized cases, 64,1% (20,129) of hospitalized patients were discharged alive and 65,7% (13,211) of the reported discharges were from the public sector. Thirty percent (29,8%) (9,365) of hospitalized cases demised due to SARS-Cov-2 related causes with 76% (7,127) of those reported deaths occurring in public sector facilities.

Of the 296 current admissions, 209 (69,9%) were admitted in the general ward, 39 (12,8%) in ICU and 10 (3,4%) in High Care. And 85 (28,7%) of current admissions were on oxygen and 15 (5,1%) were on ventilation.

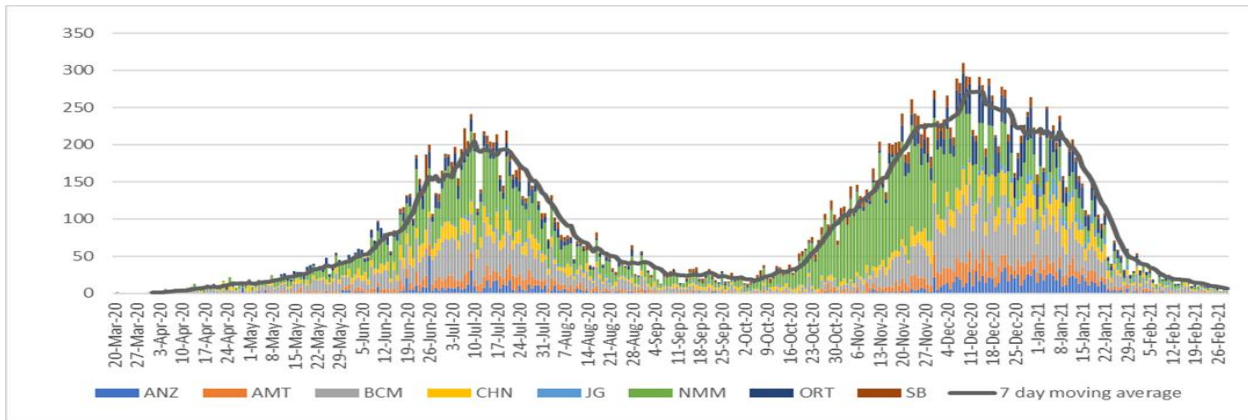


Fig. 24. Average (7 days moving) daily admissions by districts, as of 03 Mar. 2021 (DATCOV)

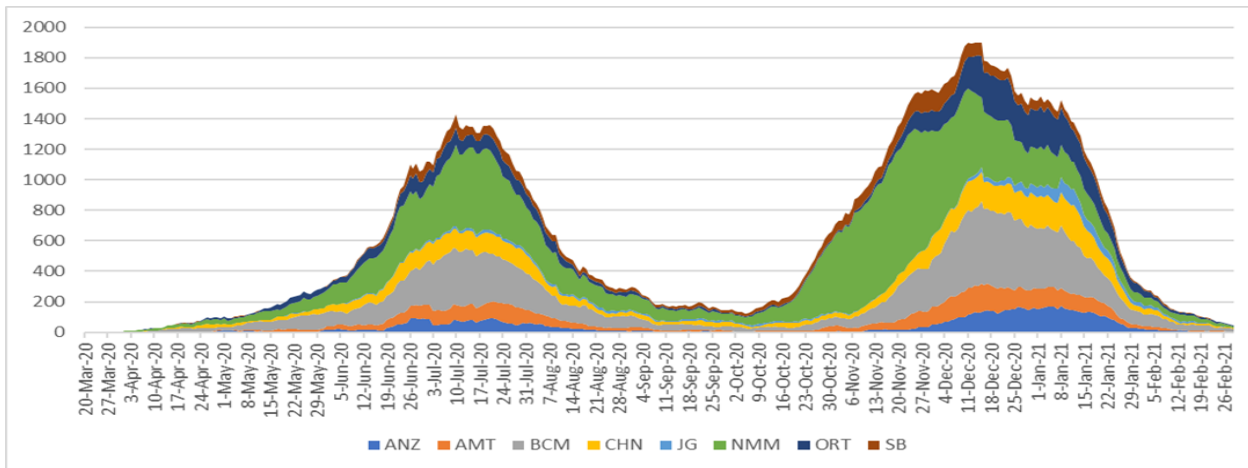


Fig. 25. No. of hospitalizations by date of admission for each district, as of 03 Mar. 2021

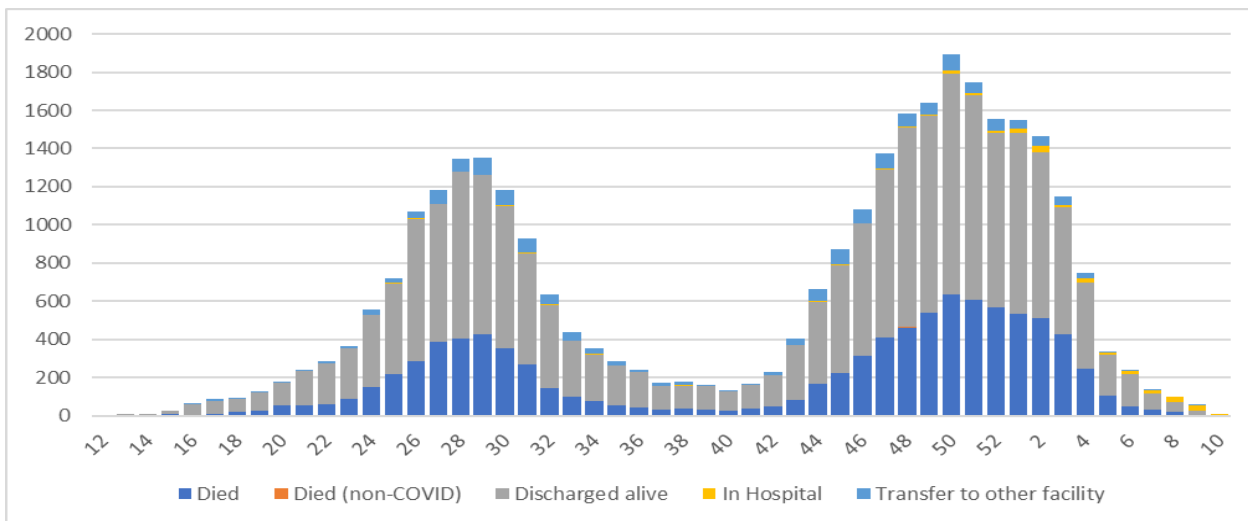


Fig. 26. Hospitalizations & outcomes by admission week, as of 03 Mar. 2021 (DATCOV)

The number of currently hospitalized patients remained high during the last part of the year and started to decline thereafter.

7.2. Co-morbidities among admitted cases and deaths

The most common co-morbidities among the hospitalized SARS-Cov-2 patients were hypertension (38,2%) and diabetes (25,3%) among hospitalized SARS-Cov-2 cases. Two other commonly reported co-morbidities HIV (7,1%), obesity (5,5%) and asthma (3,5%).

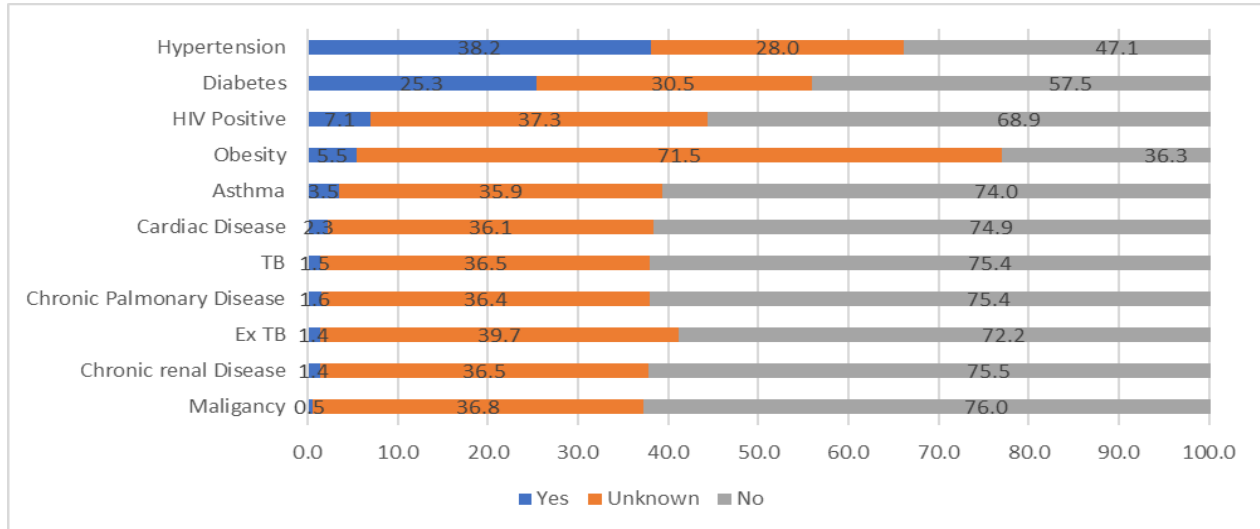


Fig. 27. Co-morbidities among SARS-Cov-2 hospitalizations, as of 03 Mar.2021 (DATCOV)

A significant percentage of hospitalized patients did not have co-morbidities. This may have resulted in the under-estimation of the burden of co-morbidities among hospitalized cases.

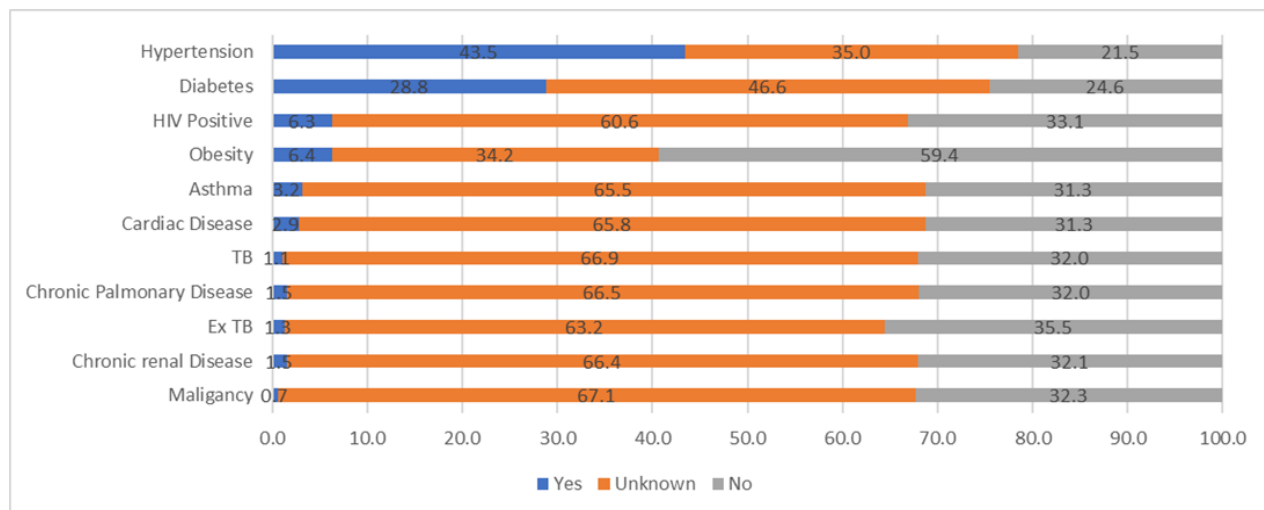


Fig. 28. Co-morbidities among SARS-Cov-2 cases who demised, as of 03 Mar. 2021 (DATCOV)

The most common comorbidities among those cases that demised in the hospital include hypertension (43,5%) and diabetes (28,8%). Other 4 co-morbidities were reported, i.e. obesity (6,4%), HIV (6,3%), asthma (3,2%) and cardiac diseases (2,9%).

8. KEY INTERVENTIONS

There are key issues, which require improvement;

- Strengthen surveillance of SARS-Cov-2 including collection and testing of specimens
- Prioritize contact tracing and monitoring to minimize the spread of the infections
- Isolate positive cases and quarantine contacts to minimize transmission
- Promote the use of prevention measures against SARS-Cov-2, i.e. wearing of masks, social distancing, and frequent handwashing.



3 577 773

No Screened



884 430

Total Lab Tests



193 982

Positive Cases



182 404

Recoveries



11 305

Deaths

DISTRICT	TOTAL SCREENED	TOTAL TESTED	TOTAL CASES	RECOVERIES	DEATHS	ACTIVE CASES	AREAS
ALFRED NZO	694 706	30 112	7 964	7 522	428	14	Badibanise,Bhakubha,Bizana,Brooksnek,Cedarville,Chithwa,Dutyini,Emanxiweni,Ezinteteni,Kokstad,Lucingweni,Matluti, Mandileni , Matatiele,Mount Ayliff, Mount Frere , Ndlantana, Ngcingo , Ntabakhulu, Sugar Bush, Tabankulu
AMATHOLE	658 126	78 606	19 267	18 126	1097	44	Adelaide, Alice, Bolotwa, Butterworth, Cathcart, Centane, Cuba, Debe Nek, Dikana, Elliotdale, Ethafeni, Frankfort, Fort Beaufort, Ibika, Idutywa, Keiskammahoek, Willowale, Lower Mhangcolo,Debe Nek, Mgababa, Nyaniso, Peddie
BUFFALO CITY METRO	210 367	125 526	38 680	36 283	2336	61	Abbottsford, Amalinda , Beacon Bay, Bisho, Braelynn, Buffalo Flats, Dimbaza, Duncan Village, East London, Ginsberg, Gonubie, Greenfields, Haven Hills, King William's Town, Mamaia, Mdantsane, Masingata, Mantlani, Nahoon, Ndevana, Needs Camp, Parkside, Selbourne, Sunnyridge, Sunset Bay,Tshatshu, Vincent, West Bank, Zwelitsha
CHRIS HANI	515 346	62 157	19 487	17 924	1531	32	Bankies, Dordrecht, Dukathole, Ekunene, Ezibeleni, Kwanobuhle, Mkwangele, Madeira Park, New Rest, Ngcobo, Nkonyama, Popcorn Valley, Qebe, Qoqodala, Queenstown, Sigadleni, Vaalbank, Sada, Middleburg, Thornhill, Ndzamela, Mlungisi,Westbourne,Ntlonze, Maya Village,Ekuphumuleni, TopTown, Vleiport, Zola
JOE GGABI	87 855	27 737	7 472	7 050	408	14	Aliwal North, Barkley East, Bhodi, Land Camp, Ugie, Inglewood, Maclear, Sotomzi, Sunduza,Robbern,Venterstsd
NELSON MANDELA METRO	856 883	163 879	55 256	51 900	3307	49	Algoa Park, Bethelsdorp, Bloemendal, Bluewater Bay, Boosens Park, Cotswold, Cuyler, Daleview, Despatch, Fernglen Port, Gelvandale, Govan Mbeki, Heath Park, Helenvale, Jacksonville, Joe Slovo, Kabega Park, Kamma Park, Kamvelithe, Khayalethu, Kleinskool, Kwa Dwesi, Kwa-Magxaki, Kwanobuhle, Kwanoxolo, KwaZakhele, Lovemore Heights, Missionvale, Motherwell, Mount Croix, New Brighton, Newton Park ,North End, Port Elizabeth, Rowlatan Park, Salt Lake, Sardinia Bay, Schauderville, Sherwood, Silvertown, Soweto-On-Sea, Steve Tshwete, Summerstrand, Tamboville, Uitenhage, Veeplaas, Walmer, West End, Westering, Zwide, Lorraine, Hillside, Daleview
OR TAMBO	265 613	83 424	22 415	21 044	1356	15	Gomora, Lutatweni, Machibi, Majola, Mandilini ,New Payne Ngqeleni, Ntsimbini, Old Payne, Libode, Lusikisiki, Mqanduli, Tombo, Marhewini, Mpikwana,Bhongweni,Cibeni, Flagstaff,Magcakeni,Ngangelizwe, Ngqanda,Tyebelana, Pollar Park, Tabase Mission, Slovo Park, Southernwood, Waterfall Park, Zandukwana,Zimbane, Ziphuzana
SARAH BAARTMAN	288 877	87 184	21 719	20 859	842	18	Aberdeen, Alexandria, Graaf-Reinet, Grahamstown, Jeffrey's Bay, Jourbertina, Humansdorp, Parson, St. Francis Bay, Kirkwood, Lotusville, Bergendal, Bratenfel, Joza, Santaville, Somerset East, Thornhill, Willomere
IMPORTED*	-	0	601	598	0	3	Bloemfontein, Ceres, Cape Town, Dunoan, Fishoek, George, Green Point, Gugulethu, Hout Bay, Langa, Khayelitsha, Knysna, Phillipi, Stellenbosch, Strand
PENDING	-	225 805	1121	1098	0	23	
GRAND TOTALS	3 577 773	884 430	193 982	182 404	11 305	273	

ACKNOWLEDGEMENTS

- The epidemiological and surveillance functions continue because of the strong partnership between the following stakeholders;
- WHO supported epidemiologists, biostatisticians, and technical support
- The National Institute for Communicable Diseases (NICD) provided the province with epidemiologists and technical support
- The data analyst from TB/HIV Care has supported data management, mapping of the cases and other functions in the department
- Right to Care assists in mapping the cases in different areas in the province
- Centre for Disease Control (Atlanta-Pretoria) provided the Department with an epidemiologist and a statistician to support the province
- The Department of Health, both the National and Provincial Department of Health re-purposed the employees to focus on the control and prevention of the pandemic
- Laboratories; National Health Laboratory Services, Pathcare and Ampath for prompt and regular reporting of SARS-Cov-2 newly diagnosed cases.