

Daily Epidemiological Report for SARS-Cov_2

Report No. 292

Date Issued 20 Jan. 2021 @ 23h00

1. PURPOSE

The report provides a descriptive analysis of SARS-Cov-2 related cases and deaths, which were detected, reported and investigated in the Eastern Cape Province, as on 20 Jan. 2021.

2. HIGHLIGHTS

a. As on 20th January 2021, **707** new SARS-Cov-2 cases were reported in the Eastern Cape Province with 3 transfers from another province. Majority of the newly reported cases were reported in Chris Hani (**19.1%**), followed by Joe Gqabi (**17.7%**), and OR Tambo (**16%**) districts.

- Active Cases: Of the 4,972 current active cases, majority are in Chris Hani (25.2%), followed by Joe Gqabi (15.3%) and Amathole (13.7%).
- The provincial recovery rate was 92.2%. Only three districts (Alfred Nzo, Chris Hani and Joe Gqabi) reported recovery rates that are below 90%.
- From the 5th of January 2021 to date, testing rate has increased while the percentage of specimens testing positive has decreased.

b. **Covid-19 related deaths:**

- In the last 24 hours, **104** new deaths were reported with **44** of the deaths occurring in the last 48 hours.
- The number of deaths due to SARS-Cov-2 related causes have increased significantly. **(Clinical audits and back capturing of deaths into DATCOV have identified an increase in the number of deaths especially in between June and August 2020.)**

c. **Hospitalizations and outcomes:** As on 20 January 2021, there were 1484 currently admitted cases, 29.6% in the public sector and 70.4% in the private sector. More than

85%, were admitted in the general ward, 10% in ICU and 4.1% in High Care. More than 50% of the current admission were on oxygen and 6.6% were on ventilation.

- d. **Healthcare workers:** The number of healthcare workers who tested positive for SARS-Cov-2 was 9,249 (5,3%), and 161 demised (the case fatality rate was 1,7%).
- Nurses were the most affected, followed by doctors and clinical associates. **There is an increase in the positivity rate among healthcare workers in the metros.**

Conclusion

- The burden of disease due to SARS-Cov-2 appears to be declining but still remains high in some areas of the province.
- Just over half of the active cases are in Chris Hani, Joe Gqabi, OR Tambo and Amathole.
- Five districts report a recovery rate, which is above 90% and 3 districts, Alfred Nzo, Chris Hani and Joe Gqabi, report recovery rates less than 90%.
- There is a need to strengthen identification of suspected cases, collection specimens for COVID-19 testing, isolation of cases and quarantining of contacts. Promoting compliance to non-pharmaceutical interventions remains a central strategy in preventing further spread of infections in communities.

3. SARS-Cov-2 CASES & DEATHS

3.1. Summary of all cases and deaths

On the 20th of January 2021, **707** new cases and **104** deaths (**44** occurred in the last 48 hours and 60 were newly reported). The cumulative cases and deaths to **188,260** and **9,716** respectively.

	No. of cases	Transfers in	New Cases	Total	%	Deaths	New Deaths		Total	CFR
							*Newly Reported	**Newly occurred		
Male	74165		254	74419	39.5	4132	24	22	4178	5.6
Female	113204		453	113657	60.4	5480	36	22	5538	4.9
Unknown	184			184	0.1	0			0	0.0
Total	187553	0	707	188260	100.0	9612	60	44	9716	5.2

* Deaths which occurred more than 48 hours ago ** Deaths which occurred within the last 48 hours of reporting

The case fatality rate (CFR) was reported as 5.2%, with a CFR of 5.6% among males and 4.9% among the females. Clinical audits in hospitals to provide valuable information to estimate the burden of disease.

District	Cases	Transfer in	New Cases	Total Confir	Recoveries	Deaths	New Deaths		Total Deaths	CFR%	Recovery	Active Cases
							*Newly Reported	**Newly occurred				
Alfred Nzo	7466		54	7520	6744	285	1	4	290	3.9	89.7	486
Amathole	18505		84	18589	16939	945	18	7	970	5.2	91.1	680
BC Metro	37570		78	37648	35131	2143	2	9	2154	5.7	93.3	363
Chris Hani	18458		135	18593	16019	1304	9	8	1321	7.1	86.2	1253
Joe Gqabi	6672		125	6797	5746	277	8	5	290	4.3	84.5	761
NM Metro	54398		51	54449	51140	2931	10	6	2947	5.4	93.9	362
OR Tambo	21593		113	21706	20071	1028	9	4	1041	4.8	92.5	594
Sarah Baartman	21277		50	21327	20238	699	3	1	703	3.3	94.9	386
Imported	595	3		598	563	0			0	0.0	94.1	35
Unspecified	1019		17	1036	984	0			0	0.0	95.0	52
E. Cape	187553	3	707	188263	173575	9612	60	44	9716	5.2	92.2	4972

* Deaths that occurred more than 48 hours ** Deaths which occurred within the past 48 hours of reporting

In the past 24 hours 707 new cases were reported; Chris Hani 19.1%, Joe Gqabi 17.7%, OR Tambo 16%, Amathole 11.9%, Buffalo City Metro 11%, Alfred Nzo 7.6%, Nelson Mandela Metro 7.2% and Sarah Baartman 7.1%.

Of the 4972 active cases, Chris Hani accounted for 25.2%, Joe Gqabi 15.3%, Amathole 13.7%, OR Tambo 11.9%, Alfred Nzo 9.8%, Sarah Baartman 7.8%, Nelson Mandela Metro 7.3% and Buffalo City Metro 7.3%.

The overall provincial recovery rate was 92.2%. Five districts reported a recovery rate greater than 90% and 3 districts (Alfred Nzo 89.7%, Chris Hani 86.2% and Joe Gqabi 84.5%) reported recovery rates less than 90%.

3.2. Newly diagnosed cases

Figure 1 provides the 7-day moving average of newly reported cases by district comparing a period of weeks, 4th-10th and 11th – 18th January 2021.

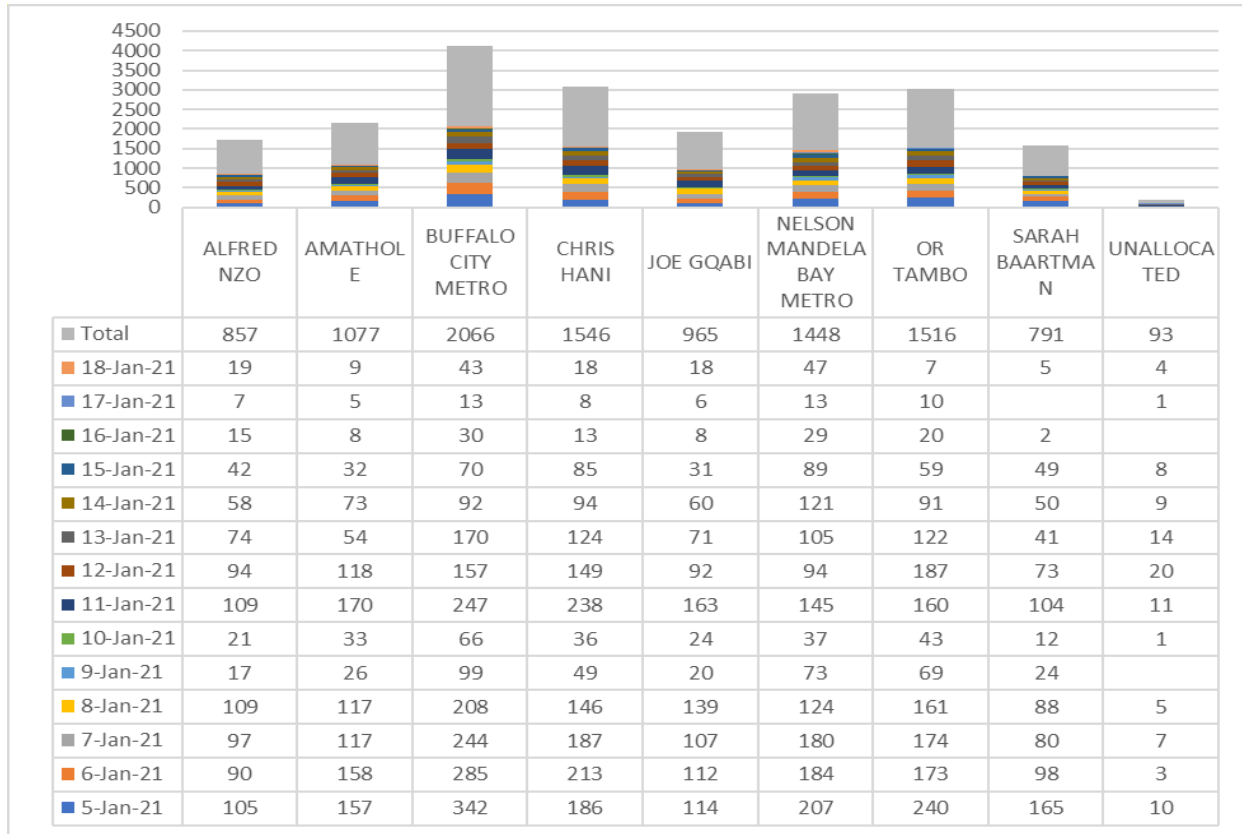


Fig. 1. 7-day moving average of SARS-Cov-2 cases by date of collection, as on 18th Jan. 2021

4. SARS-Cov-2 LAB TESTS & RESULTS

4.1. *Test Results by Laboratory

The number of specimens tested by public and private sector laboratories was 766,179.

	Private	Public	Total	Percentage (%)
Alfred Nzo	2449	22720	25 169	3,3
Amathole	8339	59912	68 251	8,9
BC Metro	30821	83488	114 309	14,9
Chris Hani	6866	46859	53 725	7,0
Joe Gqabi	1281	21087	22 368	2,9
NMB Metro	35290	119276	154 566	20,2
OR Tambo	16631	57291	73 922	9,6
S Baartman	3764	78978	82 742	10,8
Unclassified	171127	0	171 127	22,3
Eastern Cape	276 568	489 611	766 179	100

*The data for the test results by the laboratory is only updated when available

Over 64% of the tests were done in the public sector and 36.1% in private sector laboratories.

4.2. *Antigen Testing

The total number of specimens tested using the antigen testing method, was 45,423 with a 15.3% positivity rate.

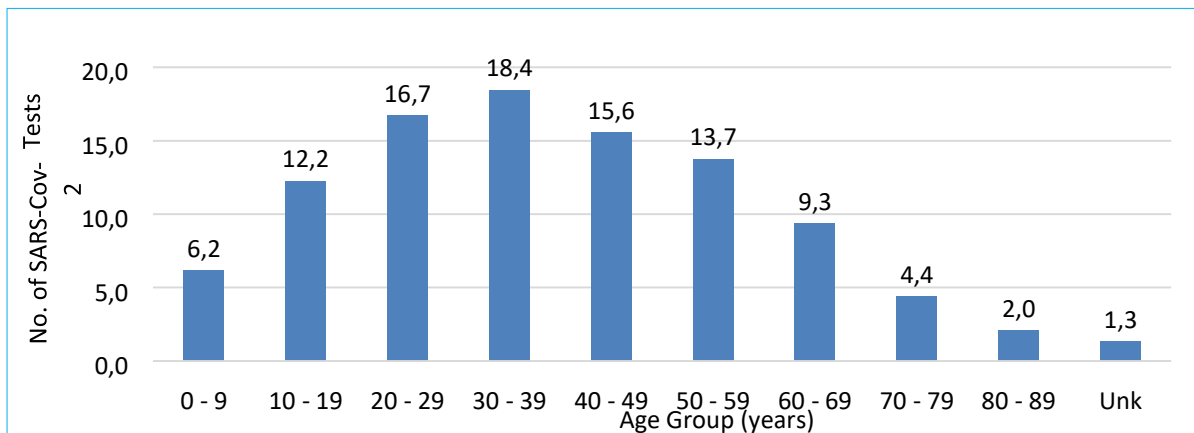
Table 4. No. of SARS-Cov-2 Tests and results using Antigen Test Method, as on 18 th Jan. 2021					
	Negative	Positive	Total	Percentage (%)	Positivity Rate (%)
A Nzo	3027	830	3857	8,5	21,5
Amathole	2579	560	3139	6,9	17,8
BC Metro	5877	1473	7350	16,2	20,0
Chris Hani	5143	1022	6165	13,6	16,6
Joe Gqabi	1544	382	1926	4,2	19,8
NM Metro	11765	1189	12954	28,5	9,2
OR Tambo	5079	1198	6277	13,8	19,1
Sarah Baartman	3481	274	3755	8,3	7,3
Total	38495	6928	45423	100	15,3

**The data for antigen testing by the laboratory is only updated when available*

The Alfred Nzo district accounted for 21.5%, followed by Buffalo City Metro (20%), Joe Gqabi (19.8%), OR Tambo (19.1%), Amathole (17.8%), Chris Hani (15.2%), Nelson Mandela Metro (9.2%) and Sarah Baartman (7.3%). Proportion of specimens testing positive for SARS-Cov-2 using the Rapid Antigen Method was 15.3%, with Alfred Nzo (21.5%), BC Metro (20%), Joe Gqabi (19.8%) and O R Tambo at 19.1%.

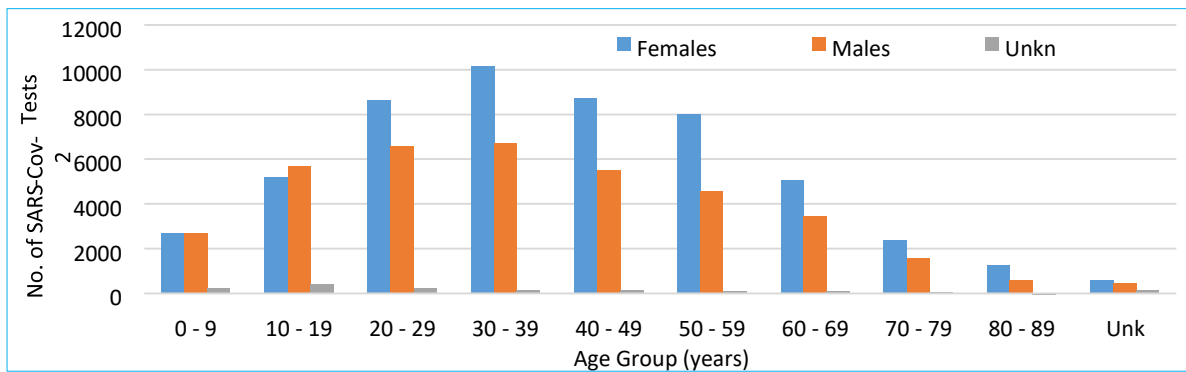
4.3. *Tests by age group and sex

The following figure 3 provides the number of tests done by age group. Data used was from the 01st October to 27th December, as reported on the 28th December by NHLS. The economically active age group (20 to 59 years) accounted for the majority of tests conducted (64.5%).



*The data for testing by the laboratory is only updated when available

Fig. 3. Public sector SARS-Cov-2 tests by age group, as on 28th Dec. 2020



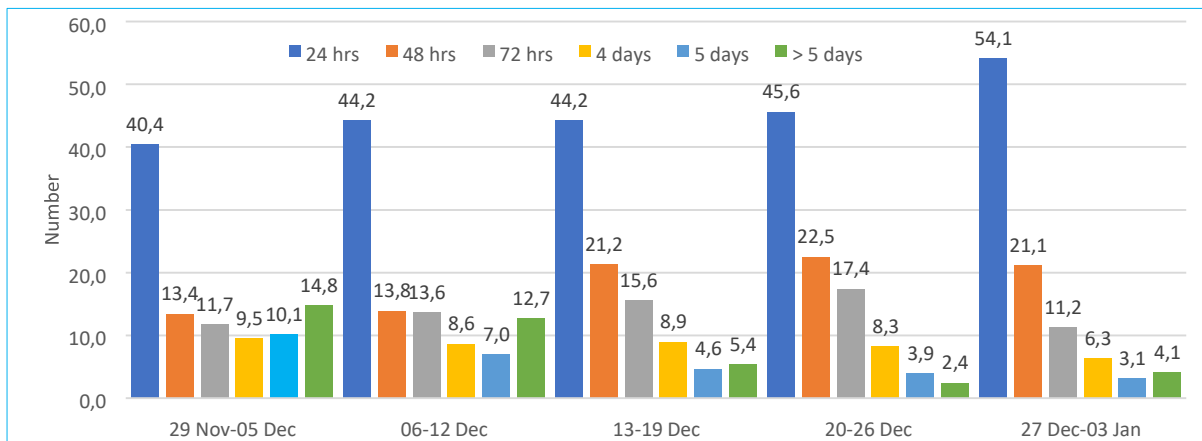
*The data for testing by the laboratory is only updated when available

Fig. 4. No. of SARS-Cov-2 public sector tests by age group and gender, as on 28 Dec. 2020

Females accounted for 56,310 (57.7%) and males accounted for 39,526 (40,6%) of the positive tests. Less than 2% (1,693) lacked information on gender.

4.4. *Turnaround Time

The turnaround time is used as a key performance indicator of the laboratory performance. The table below provides the turnaround time in both public and private laboratories that was reported by NICD.

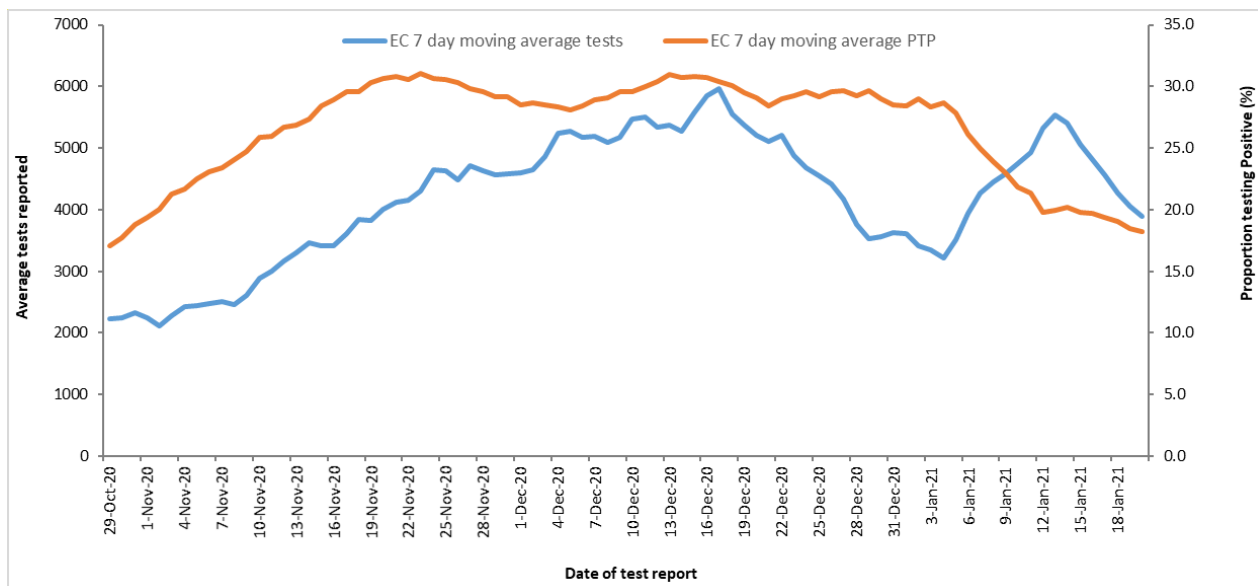


*The data for TAT by the laboratory is only updated when available

Fig. 5. Turnaround time for positive results by week as on 03rd Jan. 2021

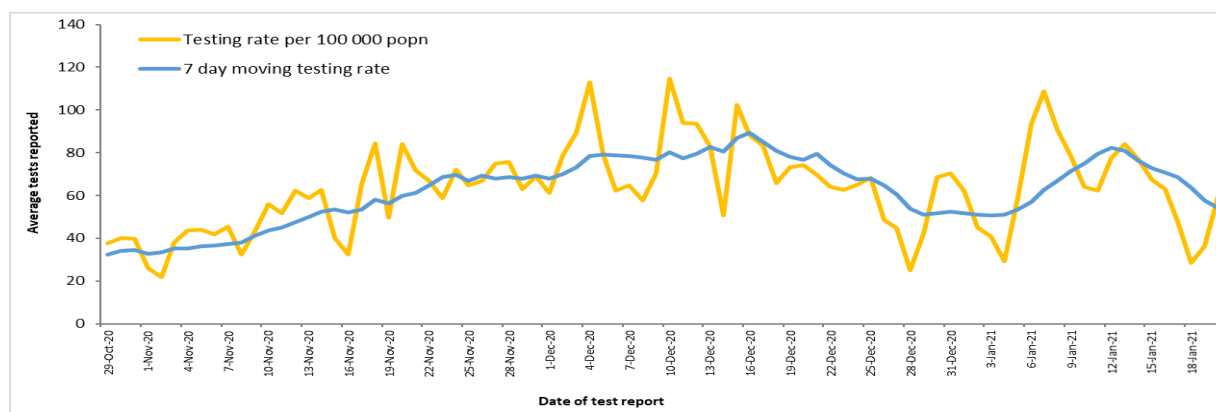
Over 86% of the test results were available within 72 hours or less compared to 85.5% in the previous week, a decrease of 1.2%. Fifty-four percent of the results were available within 24 hours, a 18.6% increase compared to the previous week.

4.5. *The 7-day moving average of SARS-Cov-2 tests & positivity rate



*The data for testing by the laboratory is only updated when available

Fig. 6. 7-day moving average for laboratory tests and positivity rate, as on 20th Jan. 2021



*The data for testing by the laboratory is only updated when available

Fig. 7. The 7-day moving average for tests and testing rate, as on 20 Jan. 2021

The seven-day moving average and testing rate has decreased from 76 tests conducted per 100,000 on 14 January to 54 tests per 100,000 on 20 January 2021.

5. ACTIVE CASES, INCIDENCE & POSITIVITY RATE

5.1. *Active SARS-Cov-2 cases and positivity rate

The province reported 74.1 active cases per 100 000 population as of 20 January 2021.

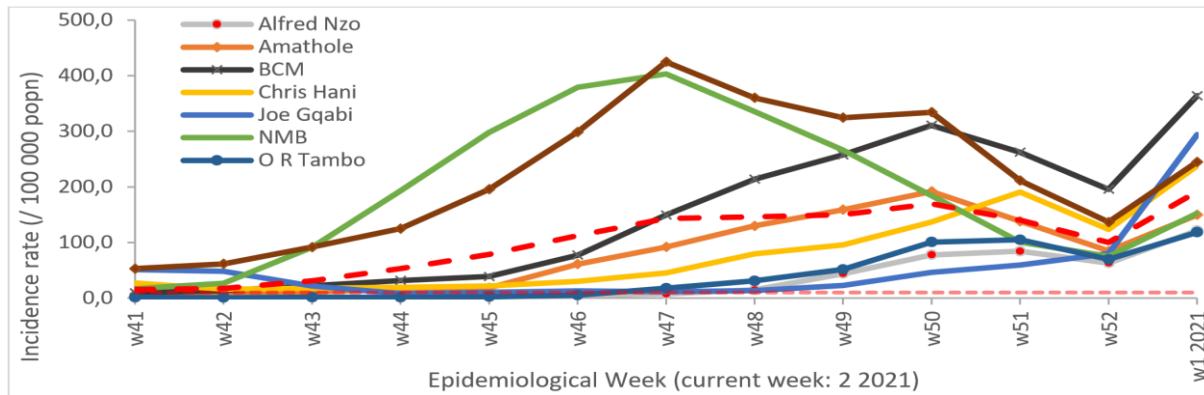
District	Population Estimates	No. of tests	SARS-Cov-2 Cases (ALL)	Active SARS-Cov-2 Cases	SARS-Cov-2 per 100,000 (Active)	Positivity Rate
Alfred Nzo	827826	25,169	7520	486	58.7	29.9
Amathole	798067	66,802	18589	680	85.2	27.8
BC Metro	798798	114,159	37648	363	45.4	33.0
Chris Hani	733743	52,524	18593	1253	170.8	35.4
Joe Gqabi	343075	21,222	6797	761	221.8	32.0
NM Metro	1210803	144,586	54449	362	29.9	37.7
OR Tambo	1520922	73,907	21706	594	39.1	29.4
S Baartman	480223	77,800	21327	386	80.4	27.4
Imported	0		598	35		
Unspecified		171,127	1036	52		
Eastern Cape	6713457	747296	188263	4972	74.1	25.2

The cumulative positivity rate was 25.2%. All eight districts reported a cumulative positivity rate above 30%.

The Joe Gqabi and Chris Hani districts reported the highest number of active cases; 221.8 and 170 active cases per 100,000 population respectively. The Amathole district reported the third highest at 85.2 active cases per 100,000 population followed by Sarah Baartman (80.4 per 100,000) and Alfred Nzo (58.7 per 100,000). Two districts (Nelson Mandela Metro and OR Tambo) had less than 50 active cases per 100,000 population.

5.2. *Incidence of SARS-Cov-2 cases

The incidence of SARS-Cov-2 is above the hotspot threshold (10 cases per 100 000 population) in all districts.



*The data for testing by the laboratory is only updated when available

Fig. 8. Incidence of SARS-Cov-2 cases by epidemiological week, as on 11 Jan 21

From week 52 there has been an increase in incidence in all districts. The observed increase follows a dip observed in week 52 (20 to 26 December 2020).

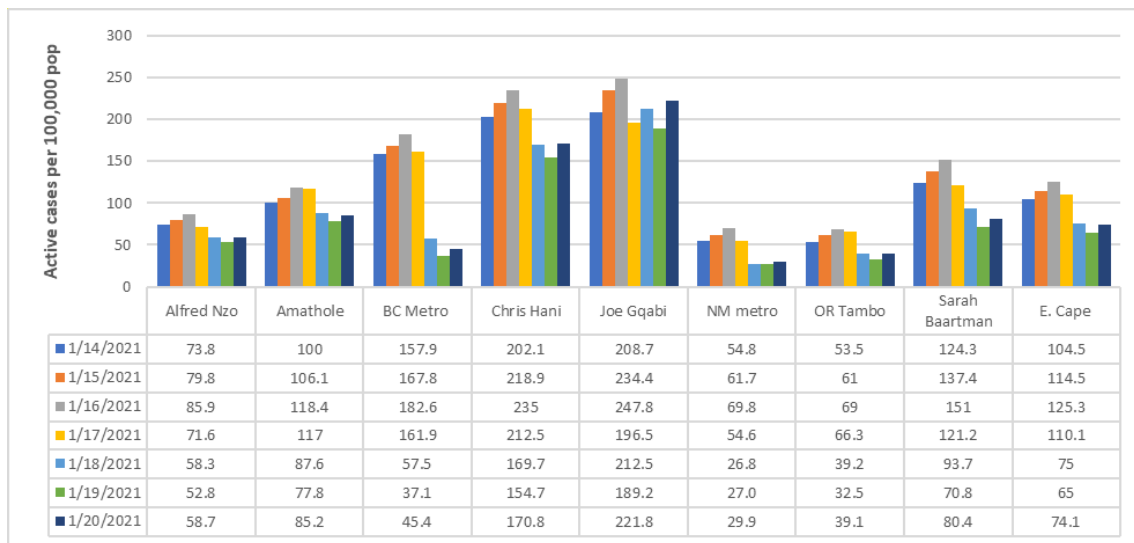
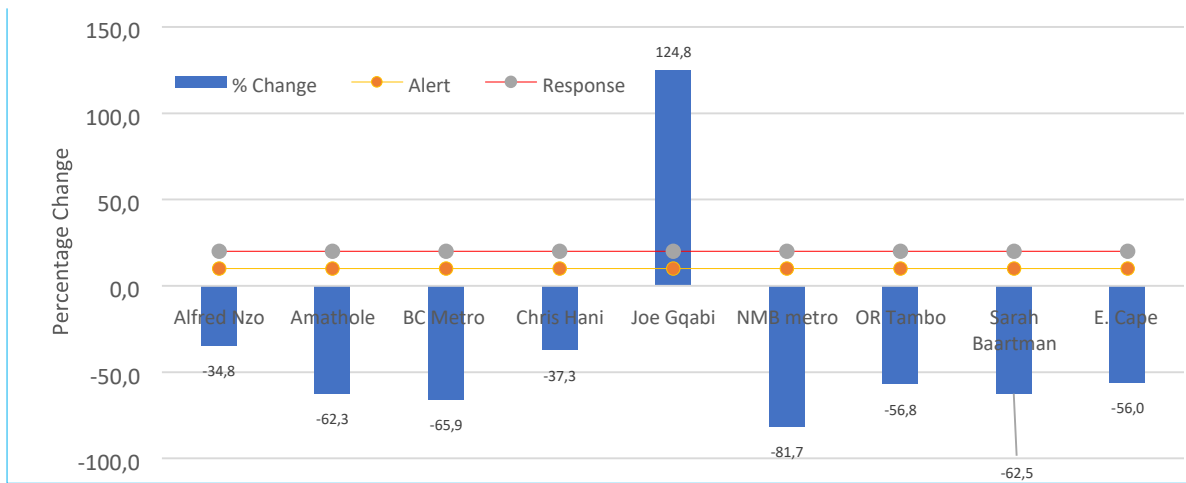


Fig. 9. Incidence of active SARS-Cov-2 (per 100,000) by district date, as on 20 Jan. 2021

In the past 7 days, the incidence of SARS-Cov-2 decreased from 104.5 per 100,000 on the 14th to 74.1 per 100,000 on the 20th January. Six districts reported more than 100 active cases per 100,000 populations, and 2 had less than 100 per 100,000 active cases.



*The data for testing by the laboratory is only updated when available

Fig. 10. Percentage change of the incidence of active SARS-Cov-2 cases, 20th Dec -02nd Jan 2021

In the last 14 days period, the number of active cases have decreased by 56,0% from 20th December to 02nd January 2021. Seven districts have a negative percentage change of the active cases, except for Joe Gqabi, which has more than 20% increase in the number of new cases.

5.3. Recovery Rate (%)

The figure below provides the recovery rate over a period of 7 days for each district.

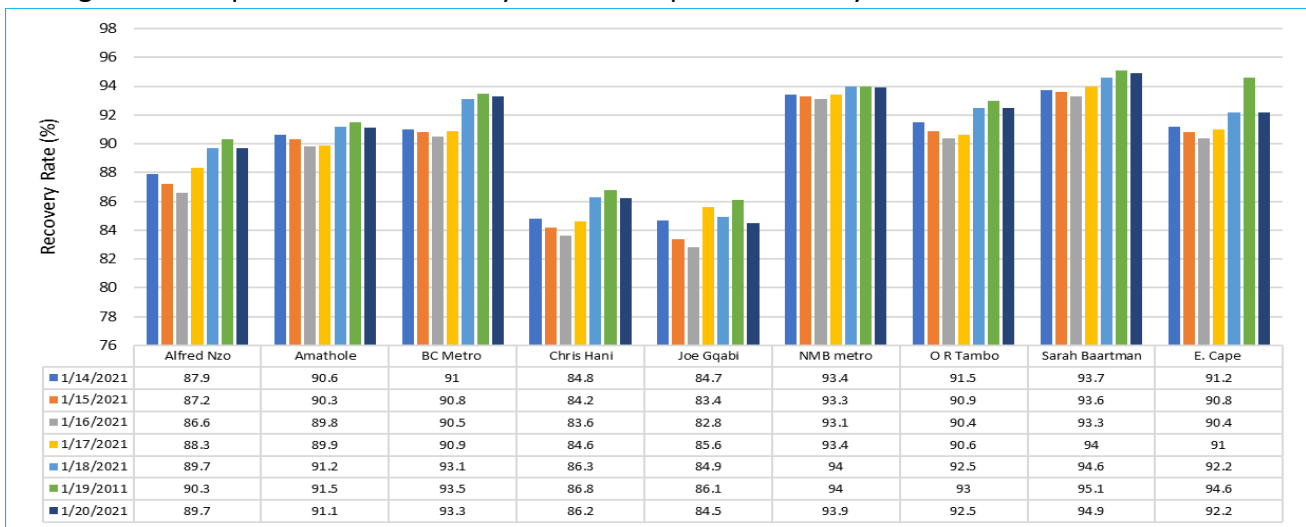


Fig. 11. Recovery Rate (%) by districts, as on the 20th Jan. 2021 (N=173,575)

The provincial recovery rate remained above 90% over the past 7 days. The Buffalo City Metro, Nelson Mandela Metro, OR Tambo, Amathole and Sarah Baartman districts had a recovery rate above 90%.

5.4. Mapping of active cases, recoveries and deaths

The map shows the distribution of active cases, recoveries and deaths related to SARS-Cov2 in the province.

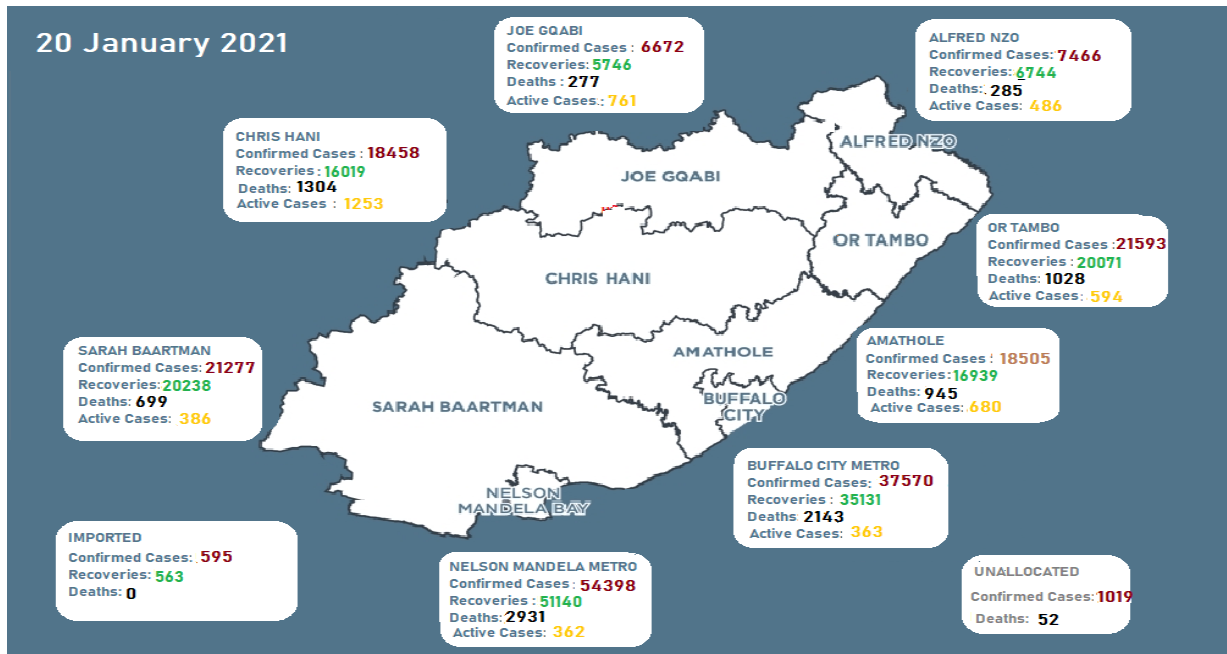


Fig. 12. Number of Covid-19 cases, recoveries and deaths, as on 20 Jan. 2021

6. SARS-COV-2 CASES AND 7-DAY MOVING AVERAGE

The graph below depicts the total number (including cumulative) of cases and the 7-day moving average.

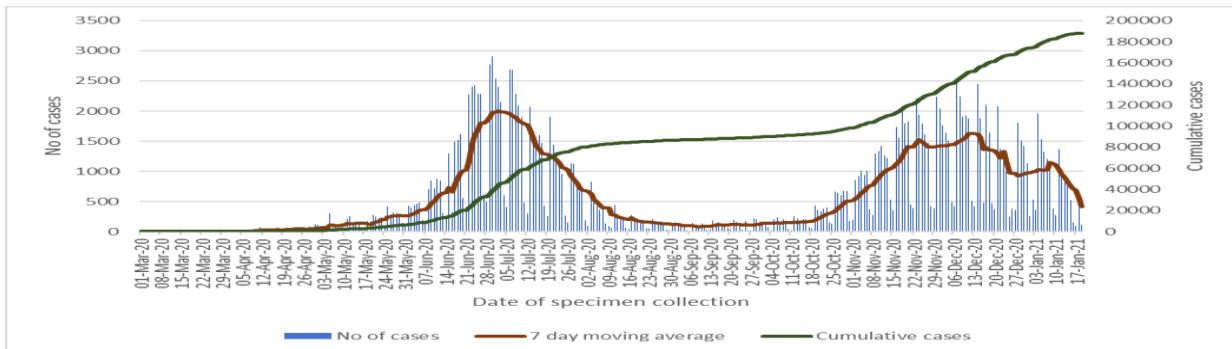


Fig. 13. The 7-day moving average for COVID-19 cases by date of specimen collection (20th Jan. 2021)

The number of daily newly diagnosed cases increased from the second half of October and peaked in the mid-December, and then decreased until to date. However, the cumulative number continues to show an upward trend. The second peak of the pandemic appears to have surpassed the level of the first peak.

7. SARS-Cov-2 RELATED MORTALITY

7.1. SARS-Cov-2 related deaths

The table below provides the total number of cases, deaths and mortality rate by the month.

Table 5. Number of SARS-Cov-2 cases and deaths by month, as on 20 Jan 2021

	Cases	Percent (%)	Deaths	Percent (%)	Case Fatality Rate (%)	Mortality Rate (per 100,000)
March	13	0.0	0	0.0	0.0	0.0
April	638	0.3	32	0.3	5.0	0.5
May	3282	1.7	283	2.9	8.6	4.2
June	23783	12.6	1017	10.5	4.3	15.1
July	50289	26.7	1970	20.3	3.9	29.3
August	8279	4.4	638	6.6	7.7	9.5
September	2991	1.6	209	2.2	7.0	3.1
October	8625	4.6	281	2.9	3.3	4.2
November	33706	17.9	1547	15.9	4.6	23.0
December	42431	22.5	2456	25.3	5.8	36.6
Jan-21	14222	7.6	1138	11.7	8.0	17.0
Unkn	0	0.0	145	1.5	0.0	2.2
Total	188259	100.0	9716	100.0	5.2	144.7

The month of December accounts for the second highest proportion of cases (22.5%) and the highest proportion of SARS CoV-2 related deaths (25.3%). The CFR was highest in May (8.6%), followed by 7.7% in August and 8 % in January of 2021.

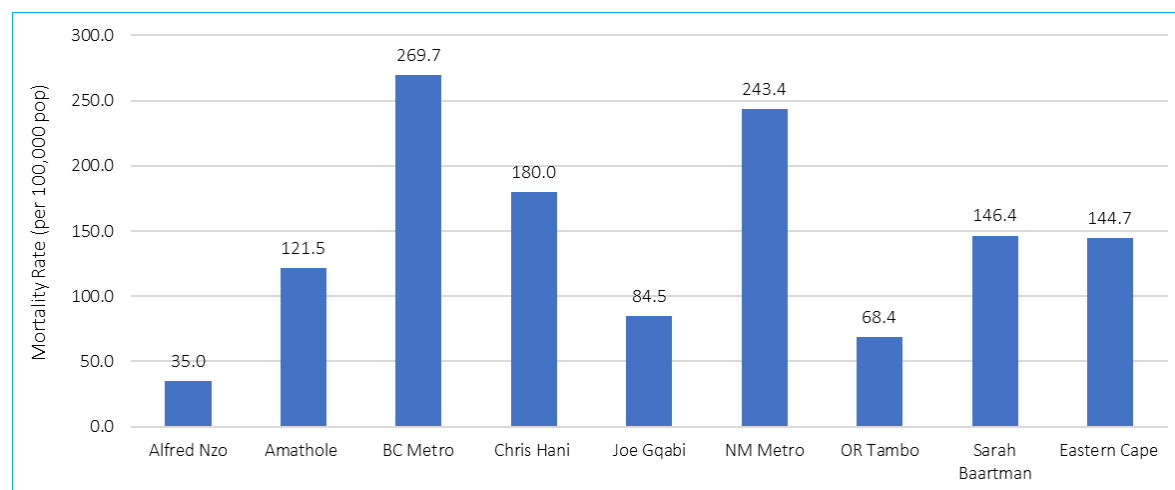


Fig. 14. SARS-Cov-2 related mortality per 100,000 by district, as on 20th Jan. 2021

The mortality rate related to SARS-Cov-2 was 144.7 deaths per 100,000 populations. The highest mortality rate was observed in Buffalo City Metro (269.7 deaths per 100,000) followed by Nelson Mandela Metro (243.4 deaths per 100,000), Chris Hani (180 per 100,000) and Sarah Baartman (146.4 per 100,000).

7.2. Number of reported SARS-Cov-2 related deaths

The figure below depicts the daily deaths and the cumulative number of deaths.

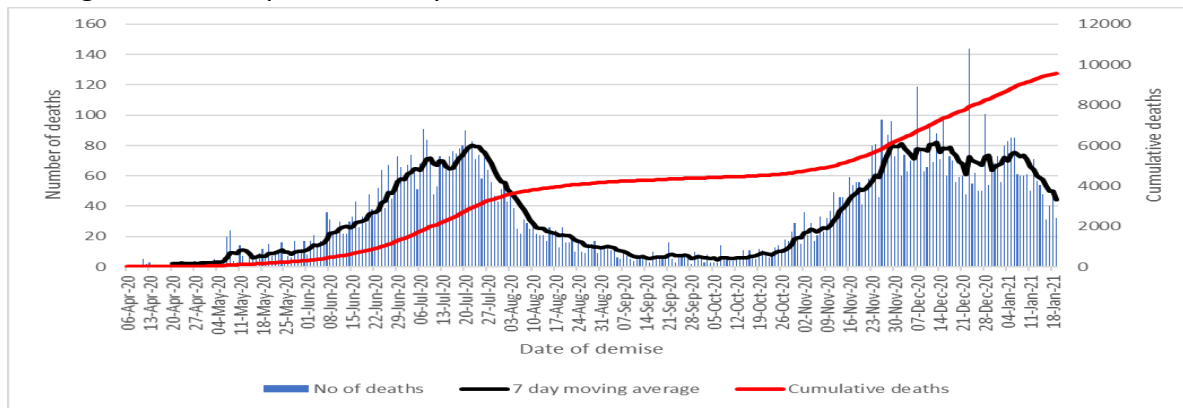


Fig. 15. Daily and cum. SARS-Cov-2 related deaths by date of demise, as on 20th Jan. 2021

The number of daily deaths increased since May 2020 and peaked on the 20th July 2020, then rapidly declined in August and October. In last week of October, the number of deaths increased and peaked in mid-December. The cumulative number of deaths continues to increase until to date.

7.3. Case Fatality Rate by district

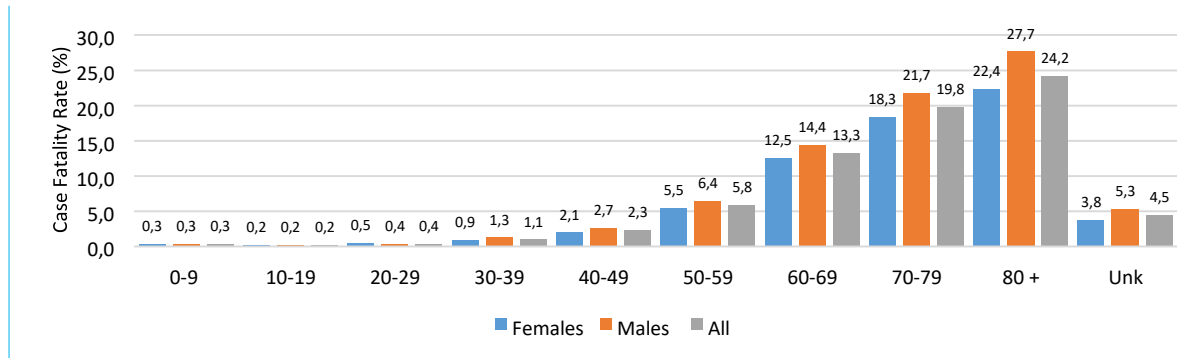


Fig. 16. SARS-Cov-2 Case Fatality Rate (%) by district, as on 20th Jan. 2021 (N=9,716)

The case fatality rate has increased over the last seven days by 0.2% from 5% on the 14th to 5.2% on the 20th of January 2021. The Chris Hani district reported the highest case fatality rate of 7.1%, followed by Buffalo City Metro (5.7%), Nelson Mandela Metro (5.4%), Amathole (5.2%), OR Tambo (4.8%), Joe Gqabi (4.3%), Alfred Nzo (3.9%) the lowest being Sarah Baartman by 3.3%.

7.4. *Case Fatality Rate by age group

The figure below provides the case fatality rate for both males and females.



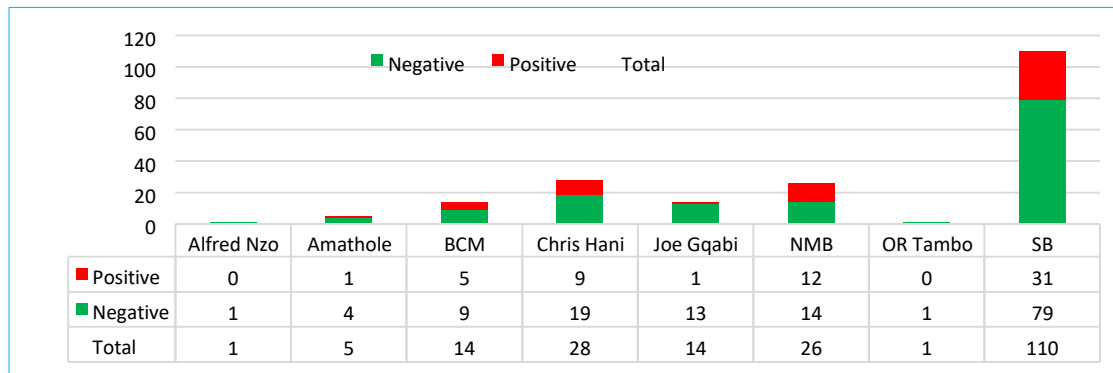
*Data on fatalities by age group updated when available

Fig. 17. SARS-Cov-2 related Case Fatality Rate (%) by age group, as on 01st Jan. 2021

The case fatality rate increases with an increase in age. The younger population had a low case fatality rate and the older population has an increased case fatality rate. The male population has a high case fatality rate compared to the female population.

7.5. *Post-mortem testing

Thirty percent (30%), i.e. 59 of the 199 post-mortem tests (PMTs) which done in the province tested positive for SARS-Cov-2.



*Data on post mortem test updated when available from NHLS/NICD

Fig. 18. No. of post mortem test results by district, as on 22nd Dec. 2020 (Tests=199)

Fifty-five percent (55,3%) of the tested were done in Sarah Baartman and 31 tested positive (28,2% positivity rate). Twenty-eight (28) PMTs were done in Chris Hani (32,1% positivity rate) and twenty-six (26) in NM Metro Metro (46,2% positivity rate).

7.6. Deaths by health facilities

The figure below provides the number of deaths by hospital or place. Only hospitals or places with a minimum of 18 deaths are included in the figure below.

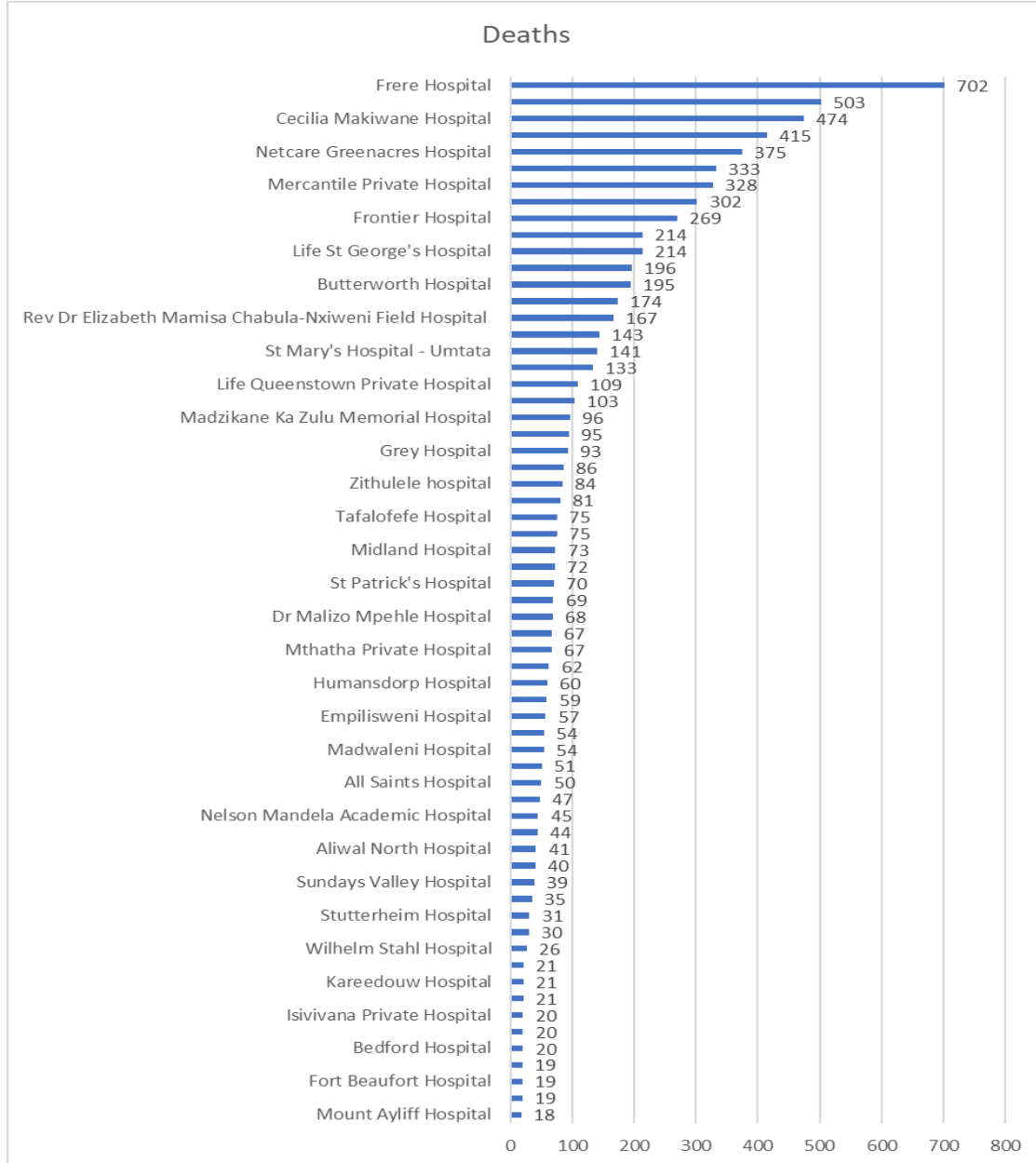


Fig. 19. No. of SARS-Cov-2 related deaths by the facility, as on 20th Jan. 2021

The hospitals include Frere, Cecilia Makiwane, Dora Nginza, Livingstone, Life St. Dominics, Netcare Greenacres, Mercantile, Uitenhage, Frontier, Mthatha Regional, Life St. Georges, Netcare Cuyler, Life EL Private, Life Queenstown, Butterworth and Rev. Dr. EM Chabula.

6. HEALTHCARE WORKERS

6.1. Cases and deaths among HCWs

The number of healthcare workers who tested positive for SARS-Cov-2 was 9,249 and 161 persons demised.

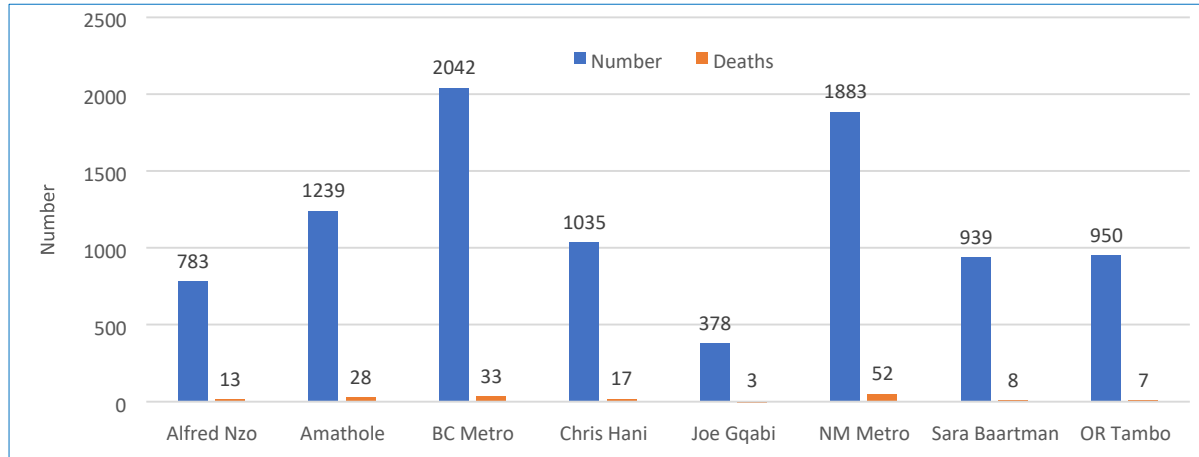


Fig. 20. SARS-Cov-2 positive Healthcare Workers, as on 01st Jan. 2021 (N = 9,249)

The number of healthcare workers who tested positive for SARS-Cov-2 in BC Metro was 2,042 (33 deaths), 1,883 in NM Metro (52 deaths), 1,239 in Amathole (28 deaths), 1,035 in Chris Hani (17 deaths), 950 in OR Tambo (7 deaths), and 939 in Sarah Baartman (8 deaths). Two districts reported the lowest number of cases, i.e. Alfred Nzo (783 cases & 13 deaths) and Joe Gqabi (378 cases & 3 deaths).

6.2. SARS-Cov-2 Cases by job category

The table below provides the number of selected healthcare professionals employed by the State and SARS-Cov-2 cases by job categories, and the positivity rate of that job category.

	Number	Cases	Positivity Rate (%)
Admin	12434	667	5,4
Allied Professionals	3041	141	4,6
Doctors & Clinical Assoc	2369	309	13,0
Nurses	20650	3843	18,6
Emergency Medical Services	2498	219	8,8

The positivity rate for the nurses was 18,6%, followed by doctors and clinical associates (13,0%), allied professionals (4,6%), EMS (8,8%), and admin personnel (5,4%). The positivity rates among healthcare workers have a negative impact on patient safety, staff morale and confidence, and the capacity of the State to provide quality health services to the population.

6.3. SARS-Cov-2 cases among HCWs in NM Metro & Sarah Baartman

The epi-curve for healthcare workers who tested positive in NM Metro and Sarah Baartman.

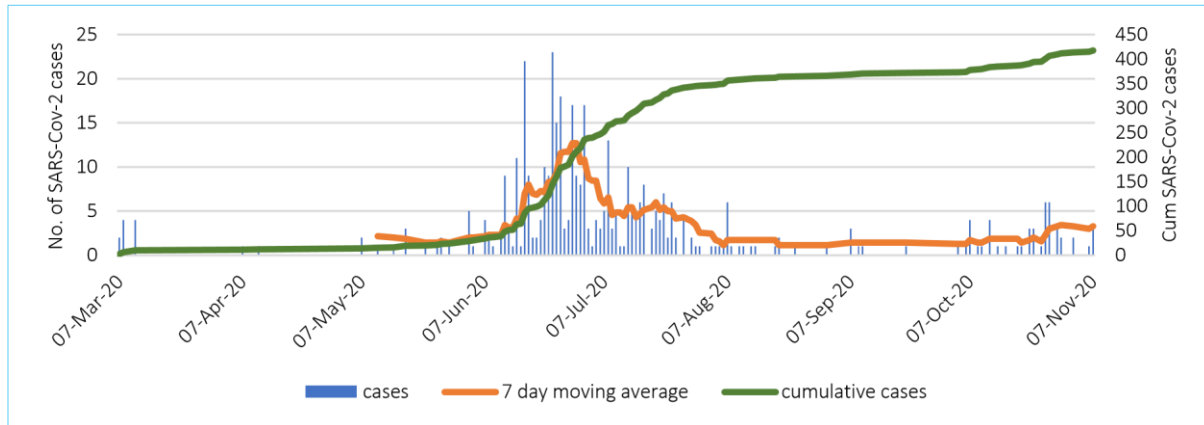


Fig. 21. No. of SARS-Cov-2 cases in NM Metro and Sarah Baartman, as on 13th Nov. 2020

The 7-day moving average shows an increase in the number of cases among healthcare workers that occurred during June and July. After the June to July period, the number of healthcare workers who tested positive decreased with the number in the general population. However, the number of cases has increased from the middle of October to date, mimicking the epi-curve for the general population. Similar to the general population, the cumulative number of cases among healthcare workers appear to continue to increase.

6.4. Case Fatality Rate (%) among HCWs

The figure below provides the cases fatality rate among all healthcare workers.

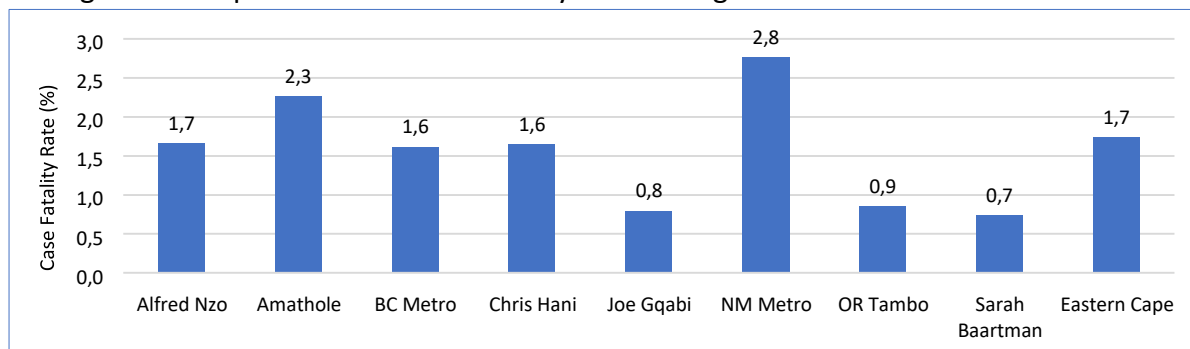


Fig. 22. SARS-Cov-2 Case Fatality Rate (%) among HCWs, as on 01st Jan. 2021 (N = 161)

The case fatality rate among healthcare workers was 1,7%. Both Amathole and NM Metro has more than 2% of the healthcare workers succumbing to SARS-Cov-2, followed by Alfred Nzo (1,7%), Chris Hani (1,6%), and BC Metro (1,6%). The lowest case fatality rate was observed in Sarah Baartman (0,7%), Joe Gqabi (0,8%) and OR Tambo (0,9%).

7. Hospitalization and outcomes

7.1. Admissions and outcomes

The cumulative number of SARS-Cov-2 hospitalizations is 27,185 (DATCOV).

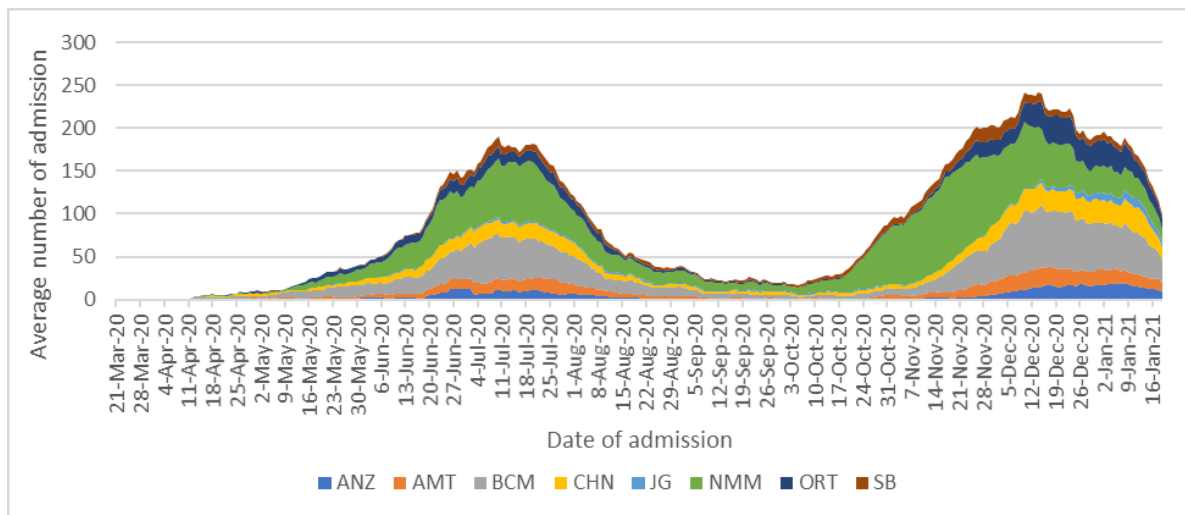
Districts	Public	Private	Total
Alfred Nzo	1281	70	1351
Amathole	2077	0	2077
Buffalo City Metro	3912	2795	6707
Chris Hani	2227	670	2897
Joe Gqabi	515	0	515
Nelson Mandela Bay Metro	5577	4095	9672
O R Tambo	1769	784	2553
Sarah Baartman	1309	104	1413
EC	18667	8518	27185

Of all the hospitalizations, 18,667 (68,7%) occurred in public sector and 8,518 (31.3%) in private sector health facilities. The metros account for 40% of total admissions.

Eastern Cape Total	Public	Private	Total
Cumulative Admissions	18667	8518	27185
Died	5818	2085	7903
Discharged Alive	11036	5984	17020
Transferred Out	760	9	769
Currently Admitted	1045	439	1484
In ICU	11	139	150
In High Care	46	16	62
In General	988	284	1272
On Oxygen	558	199	757
Ventilated	20	78	98

Nearly two thirds (62.6%) of hospitalized patients were discharged alive and more than 65% of the reported discharges were from the public sector. Over a quarter (29%) of hospitalized cases demised due to SARS-Cov-2 related causes with 73.6% of reported deaths occurring in public sector facilities.

Of 1,484 current admissions, more than 85%, were admitted in the general ward, 10% in ICU and 4.1% in High Care. More than 50% of the current admission were on oxygen and 6.6% were on ventilation.



*Daily admissions' 7-day moving average updated based on the availability of data

Fig. 23 *Average (7 day moving) daily admissions, Eastern Cape Health Facility Districts, as on 16 January 2021 (DATCOV)

As reported on DATCOV on 13 January, Buffalo City Metro (32 average daily admissions), Chris Hani (15 average daily admissions), Nelson Mandela Bay Metro (16) and O R Tambo (11 average daily admissions) account for the highest average daily admissions.

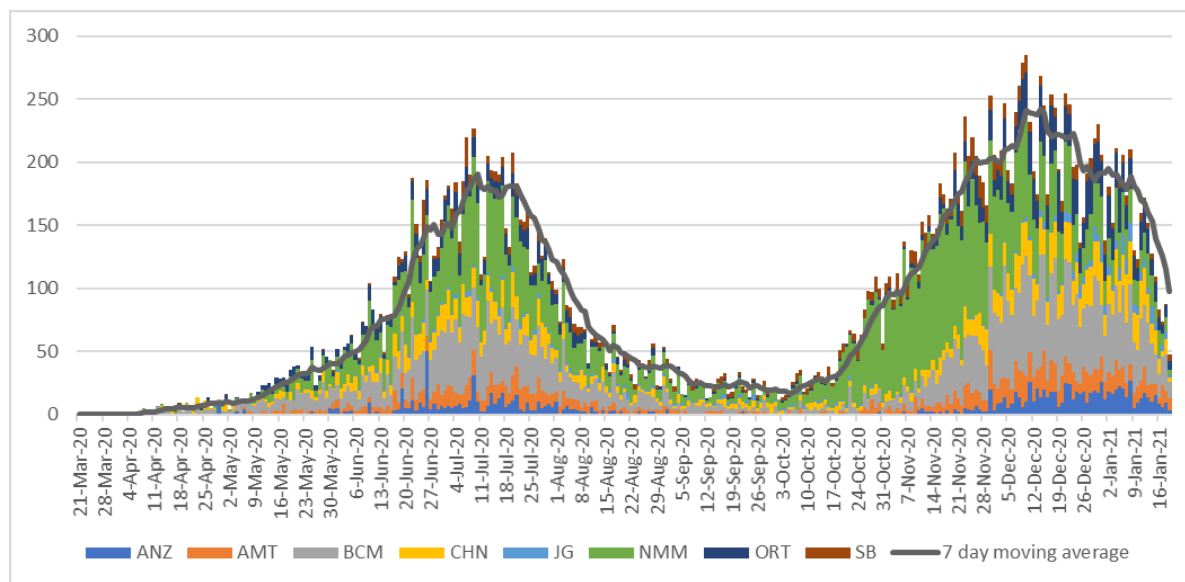


Fig. 24. Number of hospitalizations by date of admission for each district, as on 20 Jan. 2021

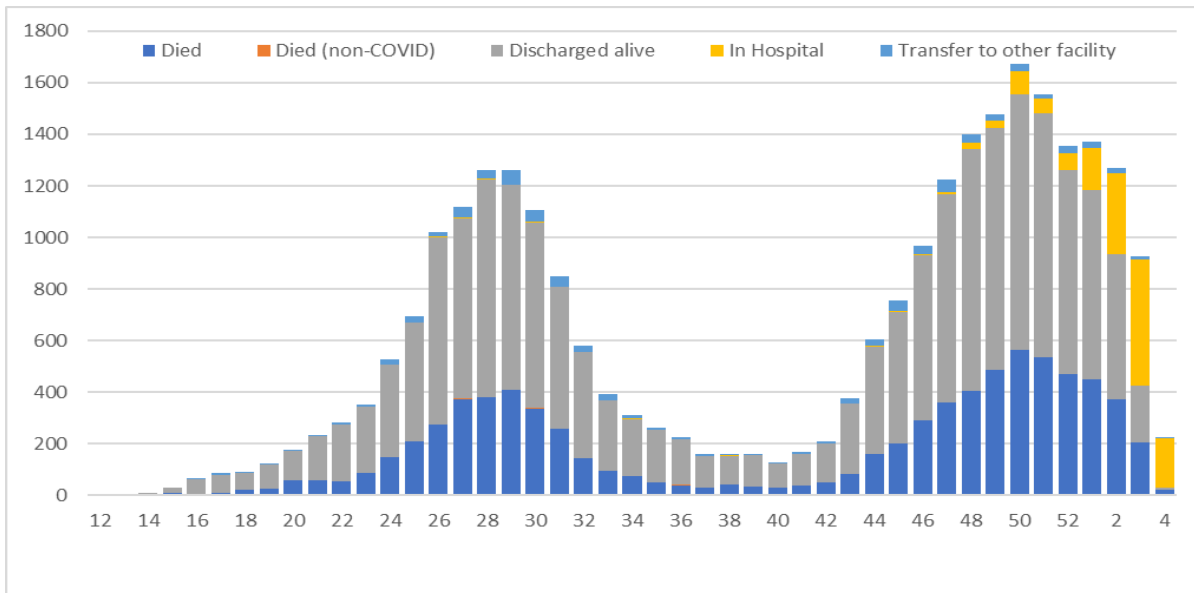


Fig. 25. Hospitalizations & outcomes by admission week, as on 20 Jan. 2021 (DATCOV)

The number of currently hospitalized patients remains high during the last part of the year and started to decline thereafter.

7.2. Co-morbidities among admitted cases and deaths

The most common co-morbidities among the hospitalized SARS-Cov-2 patients were hypertension (30.5%) and diabetes (20,6%) among hospitalized SARS-Cov-2 cases. Four other co-morbidities which were common include HIV (5,5%) and asthma (2,6%).

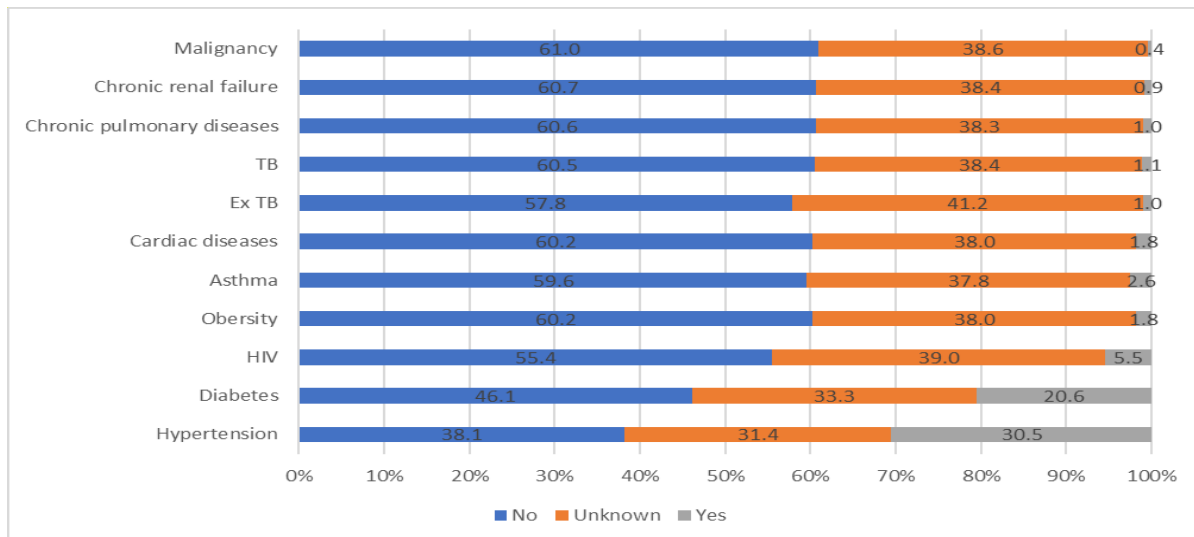


Fig. 26. Co-morbidities among SARS-Cov-2 hospitalizations, as on 20th Jan .2021 (DATCOV)

A significant percentage of hospitalized patients did not have co-morbidities. The concern was those cases, which lacked information on the existence of the co-morbidities. This may

have resulted in the under-estimation of the burden of co-morbidities among hospitalized SARS-Cov-2 cases.

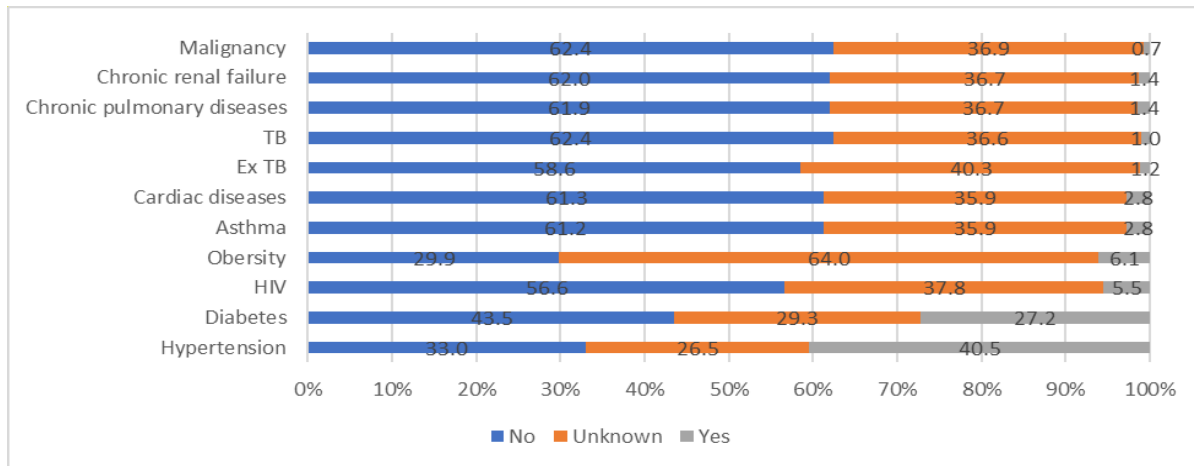


Fig. 27. Co-morbidities among SARS-Cov-2 cases who demised, as on 20th Jan. 2021 (DATCOV)

The most common comorbidities among those cases that demised in the hospital include hypertension (40,5%) and diabetes (27,2%). Four other co-morbidities obesity (6.1%), include HIV (5,5%), cardiac diseases (2.8%), and asthma (2,8%).

8. CONCLUSION

The burden of disease remains high in nearly all the districts but gradually decreasing. This may be due to the impact of the public health interventions, which were implemented in all the districts. Nearly half of the active cases were from BC Metro, Chris Hani and Amathole; and a quarter of the active cases are from OR Tambo and Alfred Nzo. Unfortunately the number of deaths have significantly increased with the increase in the number of cases.

There are key issues, which require improvement;

- Strengthen surveillance of SARS-Cov-2 including collection and testing of specimens
- Prioritize contact tracing and monitoring to minimize the spread of the infections
- Isolate positive cases and quarantine contacts to minimize transmission
- Promote the use of prevention measures against SARS-Cov-2, i.e. wearing of masks, social distancing, and frequent handwashing



3 577 773
No Screened



822 576
Total Lab Tests



188 263
Positive Cases



173 575
Recoveries



9 612
Deaths

DISTRICT	TOTAL SCREENED	TOTAL TESTED	TOTAL CASES	RECOVERIES	DEATHS	ACTIVE CASES	AREAS
ALFRED NZO	694 706	29 026	7 520	6 744	285	491	Badibanise,Bhakubha,Bizana,Brooksnek,Cedarville,Chithwa,Dutyini,Emanxiweni,Ezinteteni,Kokstad,Lucingweni,Maluti, Mandileni , Matatiele,Mount Ayliff, Mount Frere , Ndlantana, Ngingo, Ntabakhulu, Sugar Bush, Tabankulu
AMATHOLE	658 126	72 693	18 589	16 939	945	705	Adelaide, Alice, Bolotwa, Butterworth, Cathcart, Centane, Cuba, Debe Nek, Dikana, Elliotdale, Ethafeni, Frankfort, Fort Beaufort, Ibika, Idutywa, Keiskammahoek, Willowale, Lower Mhangcolo,Debe Nek, Mgababa, Nyaniso, Peddie
BUFFALO CITY METRO	210 367	122 554	37 648	35 131	2143	374	Abbottsford, Amalinda , Beacon Bay, Bisho, Braelynn, Buffalo Flats, Dimbaza, Duncan Village, East London, Ginsberg, Gonubie, Greenfields, Haven Hills, King William's Town, Mamata, Mdantsane, Masingata, Mantlaneni, Nahoon, Ndevana, Needs Camp, Parkside, Selbourne, Sunnyridge, Sunset Bay,Tshatshu, Vincent, West Bank, Zwelitsha
CHRIS HANI	515 346	60 682	18 593	16 019	1304	1 270	Bankies, Dordrecht, Dukathole, Ekunene, Ezibeleni, Kwanobuhle, Mcwangele, Madeira Park, New Rest, Ngcobo, Nkonyama, Popcorn Valley, Qebe, Goqodala, Queenstown, Sigadleni, Vaalbank, Sada, Middleburg, Thornhill, Ndzamela, Mlungisi,Westbourne,Nitlonze, Maya Village,Ekuphumuleni, TopTown, Vteipoort, Zola
JOE GOABI	87 855	24 759	6 797	5 746	277	774	Aliwal North, Barkley East, Bhodi, Land Camp, Ugie, Inglewood, Maclear, Solomzi, Sunduza,Robbern,Venterstsd
NELSON MANDELA METRO	856 883	171 422	54 449	51 140	2931	378	Algoa Park, Bethelsdorp, Bloemendal, Bluewater Bay, Boosens Park, Cotswold, Cuyler, Daleview, Despatch, Fernglen Port, Gelvandale, Govan Mbeki, Heath Park, Helenvale, Jacksonville, Joe Slovo, Kabega Park, Kamma Park, Kamvelihle, Khayaletshu, Kleinskool, Kwa Dwesi, Kwa-Magxaki, Kwanobuhle, Kwanoxolo, KwaZakhele, Lovemore Heights, Missionvale, Motherwell, Mount Croix, New Brighton, Newton Park, North End, Port Elizabeth, Rowallan Park, Salt Lake, Sardinia Bay, Schauderville, Sherwood, Silvertown, Soweto-On-Sea, Steve Tshwete, Summerstrand, Tamboville, Uitenhage, Veeplaas, Walmer, West End, Westering, Zwide, Lorraine, Hillside, Daleview
OR TAMBO	265 613	80 211	21 706	20 071	1028	607	Gomora, Lutatweni, Machibi, Majola, Mandilini, New Payne Nggeleni, Ntsimbini, Old Payne, Libode, Lusikisiki, Mqanduli, Tombo, Marhewini, Mpikwana,Bhongweni,Cibeni, Flagstaff,Magcakeni,Ngangelizwe, Ngqanda,Tyebelana, Pollar Park, Tabase Mission, Slovo Park, Southernwood, Waterfall Park, Zandukwana,Zimbane, Ziphuzana
SARAH BAARTMAN	288 877	90 102	21 327	20 238	699	390	Aberdeen,Alexandria, Graaf-Reinet, Grahamstown, Jeffrey's Bay, Jourbertina, Humansdorp, Parson, St. Francis Bay, Kirkwood, Lotusville, Bergendal, Bratenfel, Joza, Santaville, Somerset East, Thornhill, Willowmore
IMPORTED*	-	0	598	563	0	35	Bloemfontein, Ceres, Cape Town, Dunoon, Fishoek, George, Green Point, Gugulethu, Hout Bay, Langa, Khayelitsha, Knysna, Phillipi, Stellenbosch, Strand
PENDING	-	171 127	1036	984	0	52	
GRAND TOTALS	3 577 773	822 576	188 263	173 575	9 612	5 076	

ACKNOWLEDGEMENTS

- The epidemiological and surveillance functions continue because of the strong partnership between the following stakeholders;
- World Health Organization with epidemiologists, biostatisticians, and technical support
- The National Institute for Communicable Diseases (NICD) provided the province with epidemiologists and technical support
- The data analyst from TB/HIV Care has supported data management, mapping of the cases and other functions in the department
- Right to Care assists in mapping the cases in different areas in the province
- Centre for Disease Control (Atlanta-Pretoria) provided the Department with an epidemiologist and a statistician to support the province
- The Department of Health, both the National and Provincial Department of Health re-purposed the employees to focus on the control and prevention of the pandemic
- Laboratories; National Health Laboratory Services, Pathcare and Ampath for prompt and regular reporting of SARS-Cov-2 cases.

Appendix 1: Incidence rate by Eastern Cape

Districts and week of specimen collection as of 31 December 2020 Week 2 is interim data is incomplete and has been excluded.

