

Daily Epidemiological Report for SARS-Cov_2

Report No. 327

Date Issued 24 Feb. 2021 @21h40

1. PURPOSE

The report provides a descriptive analysis of SARS-Cov-2 related cases and deaths, and hospitalizations in the Eastern Cape Province, as of 24 Feb. 2021.

2. HIGHLIGHTS

2.1. New cases, active cases and recoveries

- In the past 24 hours, 48 new cases were reported, where Amathole, BC Metro and Chris Hani accounted for 52,1%, Alfred Nzo and OR Tambo for 22,9%, and NM Metro and Sarah Baartman accounted for 22,9%.
- Of the 430 active cases, 50,2% were from Amathole, BC Metro and Chris Hani, 30,9% from NM Metro and Sarah Baartman, 7,7% were from Alfred Nzo and OR Tambo, and 5,8% from Joe Gqabi.
- The overall provincial recovery rate was 94,0%. All the districts reported a recovery rate greater than 90%.

2.2. SARS-Cov-2 related deaths

- In the last 24 hours, 5 deaths were reported (2 occurred in the last 48 hours). The case fatality rate was 5.8%, with a CFR of 6.3% among males and 5.5% among the female population.
- Chris Hani has the highest case fatality rate, followed by BC Metro, NM Metro and OR Tambo.

2.3. Hospitalizations and outcomes:

- Sixty-four (64%) of the hospitalized patients were discharged alive and 65,7% of the discharges were from the public sector.

- Thirty percent (29,8%) of hospitalized cases demised with 76,1% of these deaths occurred in public sector facilities.
- Of the 417 current admissions, 73,4% were admitted in the general ward, 12,9% in ICU and 3,1% in High Care. And 29,3% of current admissions were on oxygen and 5,0% were on ventilation.

2.4. **Healthcare workers:**

- The number of healthcare workers who tested positive for SARS-Cov-2 was **11,396** and **292** demised (the case fatality rate was 2.6%).
- Nurses were the most affected, followed by doctors and clinical associates. **There is an increase in the positivity rate among healthcare workers in the metros.**

2.5. **Conclusion**

- The implementation of the public health measures continues to make a significant impact on the number of SARS-Cov-2 cases, deaths and hospitalizations.
- Effective surveillance system remains the cornerstone to the identification of cases, case investigation, and case and contact tracing and monitoring. However, isolation and quarantine of cases and contacts are some of the public health measures, which can minimize the impact of the pandemic.
- Promoting compliance to non-pharmaceutical interventions remains a central strategy in preventing the further spread of infections in communities.
- The threats to the gains of the last few months include the emergency of the new variant, reintroduction of social and cultural gatherings, and poor compliance to the non-pharmaceutical interventions.

3. SARS-Cov-2 CASES & DEATHS

3.1. Summary of all cases and deaths

The number of new cases was **48** and **5 deaths** (2 occurred in the last 48 hours). The cumulative number of cases and deaths were **193,773** and **11,269** respectively.

	No. of cases	New Cases	Total	%	Deaths	New Deaths		Total	CFR
						*Newly Reported	**Newly occurred		
Male	76575	22	76597	39,5	4811	1	1	4813	6,3
Female	117135	26	117161	60,5	6453	2	1	6456	5,5
Unknown	15	0	15	0,0	0			0	0,0
Total	193725	48	193773	100,0	11264	3	2	11269	5,8

* Deaths that occurred more than 48 hours ago ** Deaths that occurred within the last 48 hours of reporting

The provincial case fatality rate (CFR) was 5.8%, with a CFR of 6.3% among males and 5.5% among the female population. The newly reported deaths were from Amathole, BC Metro and OR Tambo.

District	Cases	New Cases	Total Confirmed	Recoveries	Deaths	New Deaths		Total Deaths	CFR%	Recovery Rate	Active Cases
						*Newly Reported	**Newly occurred				
Alfred Nzo	7926	4	7930	7492	426	0	0	426	5,4	94,5	12
Amathole	19247	2	19249	18082	1092	2	0	1094	5,7	93,9	73
BC Metro	38631	10	38641	36213	2328	0	2	2330	6,0	93,7	98
Chris Hani	19451	13	19464	17893	1526	0	0	1526	7,8	91,9	45
Joe Gqabi	7440	1	7441	7010	406	0	0	406	5,5	94,2	25
NM Metro	55222	4	55226	51825	3297	0	0	3297	6,0	93,8	104
OR Tambo	22389	7	22396	21027	1347	1	0	1348	6,0	93,9	21
S Baartman	21700	7	21707	20836	842	0	0	842	3,9	96,0	29
Imported	600	0	600	598	0			0	0,0	99,7	2
Unspecified	1119	0	1119	1098	0			0	0,0	98,1	21
E. Cape	193725	48	193773	182074	11264	3	2	11269	5,8	94,0	430

* Deaths that occurred more than 48 hours ** Deaths that occurred within the past 48 hours of reporting

In the past 24 hours, 48 new cases were reported, where Amathole, BC Metro and Chris Hani accounted for 25 cases (52,1%), Alfred Nzo and OR Tambo for 11 cases (22,9%), and NM Metro and Sarah Baartman accounted for 11 cases (22,9%).

Of the 430 active cases, just over 50% (216 cases) were from Amathole, BC Metro and Chris Hani, 30,9% (133 cases) from NM Metro and Sarah Baartman, 7,7% (33 cases) from Alfred Nzo and OR Tambo, and 5,8% (25 cases) were from Joe Gqabi.

The overall provincial recovery rate was 94,0%. All the districts reported a recovery rate greater than 90%.

3.2. Newly diagnosed cases

The figure below provides the 7-day moving average of newly reported cases by district comparing a period from the 10th to 23rd February 2021, i.e. 738 cases.

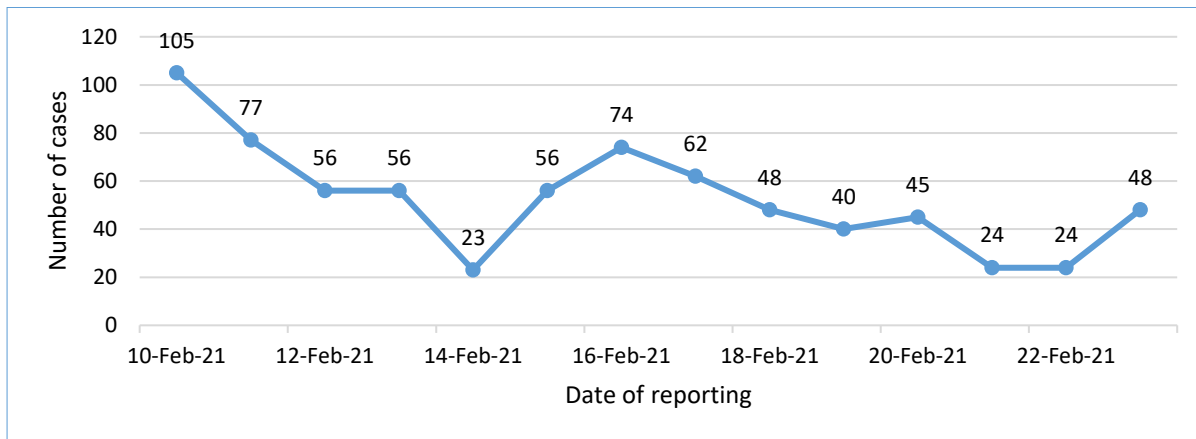


Fig. 1. No. of daily reported SARS-Cov-2 cases by date of collection, as of 24 Feb. 2021

The number of newly reported continues to decrease during February especially from the 10th February.

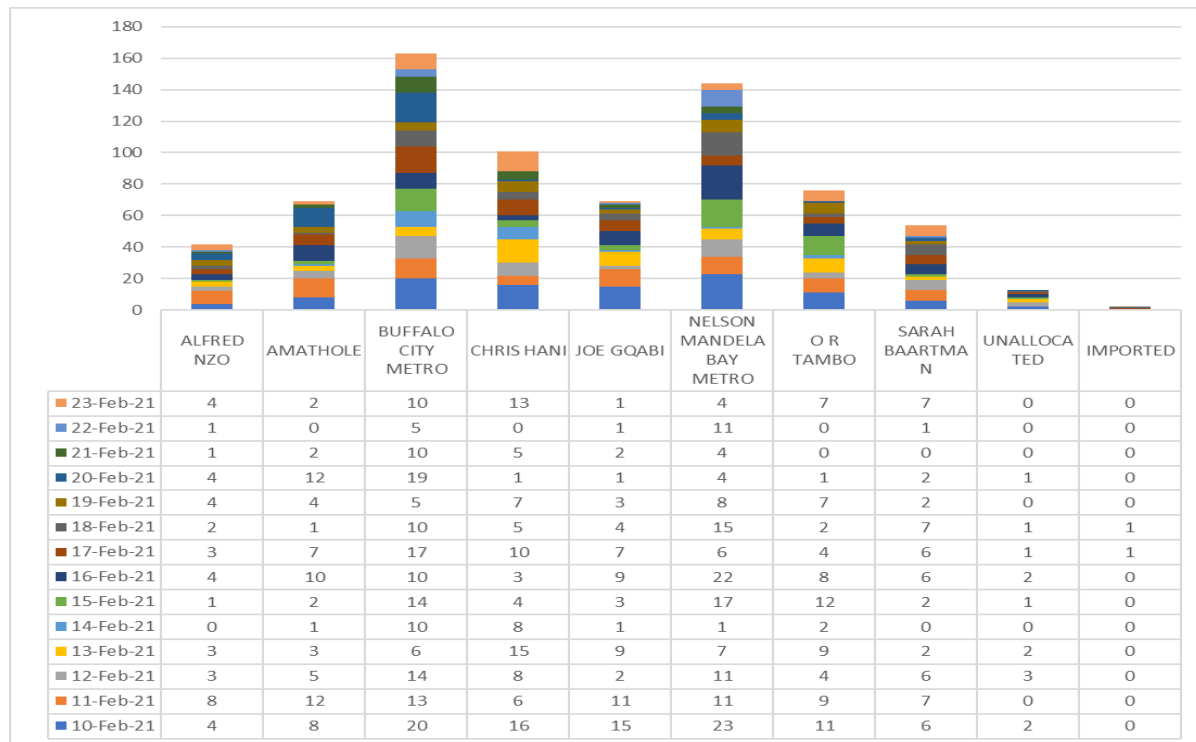


Fig. 2. No. of daily SARS-Cov-2 cases by district and date of collection, as of 24 Feb. 2021

The highest number of newly reported cases were from Buffalo City Metro followed by Nelson Mandela Metro, Chris Hani, OR Tambo and Amathole.

4. SARS-Cov-2 LAB TESTS & RESULTS

4.1. Test Results by Laboratory

A total of 876,061 tests were done by both private and public laboratories in the Eastern Cape. The public sector conducted 62,7% of the tests and 37,3% by the private sector laboratories.

	Private	Public	Total	Percentage (%)
Alfred Nzo	2449	27460	29 909	3,4
Amathole	8339	69872	78 211	8,9
BC Metro	30821	94013	124 834	14,2
Chris Hani	6866	54887	61 753	7,0
Joe Gqabi	1281	26276	27 557	3,1
NMB Metro	35290	127492	162 782	18,6
OR Tambo	16631	66530	83 161	9,5
Sarah Baartman	3764	83124	86 888	9,9
Unclassified	220966	0	220 966	25,2
Eastern Cape	326407	549654	876 061	100,0

The number of tests in the province represents 12,9% of all the tests which were done in South Africa.

4.2. Antigen Testing

Since the introduction of Antigen Testing was introduced, 67,392 tests were conducted and 11,3% tested positive. These tests in the province constitute 11,4% of the tests in the country.

	Negative	Positive	Total	Percentage (%)	Positivity Rate (%)
A Nzo	5912	920	6832	10,1	13,5
Amathole	3380	600	3980	5,9	15,1
BC Metro	8231	1591	9822	14,6	16,2
Chris Hani	6561	1135	7696	11,4	14,7
Joe Gqabi	2291	465	2756	4,1	16,9
NM Metro	18531	1266	19797	29,4	6,4
OR Tambo	10384	1341	11725	17,4	11,4
Sarah Baartman	4487	297	4784	7,1	6,2
Total	4214	7615	67392	100,0	11,3

The Nelson Mandela Metro accounted for 29,4%, followed by OR Tambo (17,4%), Buffalo City Metro (14,6%), Chris Hani (11,4%), Alfred Nzo (10,1%), Sarah Baartman (7,1%), Amathole (5,9%), and Joe Gqabi (4.1%). The proportion of specimens testing positive for SARS-Cov-2 using the Rapid Antigen Method was 11,3%, where 16,9% in Joe Gqabi, 16,2% in Buffalo City Metro, Amathole (15,1%), Chris Hani (14,7%), Alfred Nzo (13,5%), and OR Tambo (11,4%).

4.3. Tests by age group and sex

Analysis of the tests, which were conducted shows that the majority of the tests, were among the economically active age group (20 to 59 years), i.e. 60,9%.

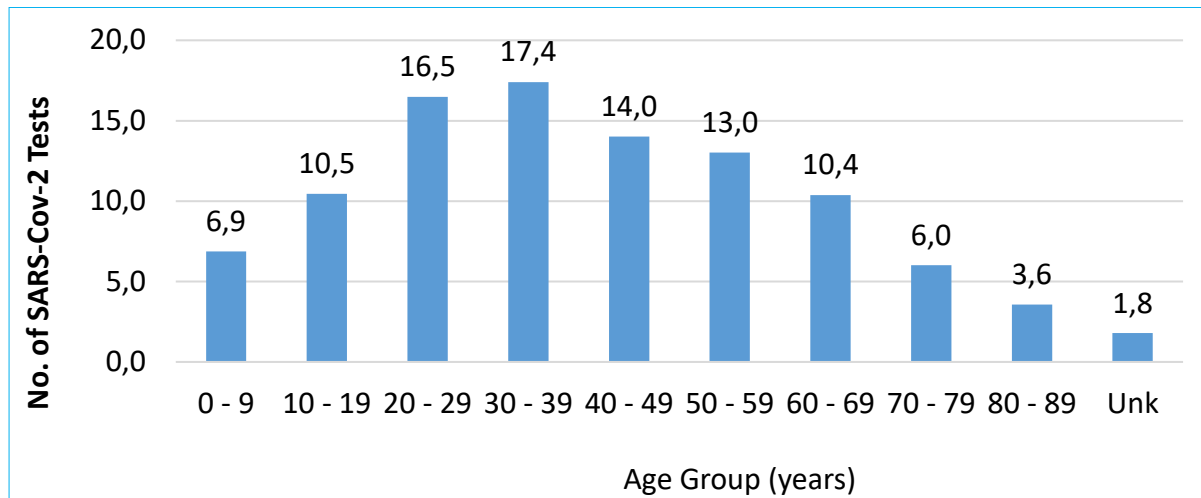


Fig. 3. Number of SARS-Cov-2 tests by age group in Public Sector Labs, as of 21st Feb. 2021

The younger population and the elderly constitute less than 40% of the population that was tested.

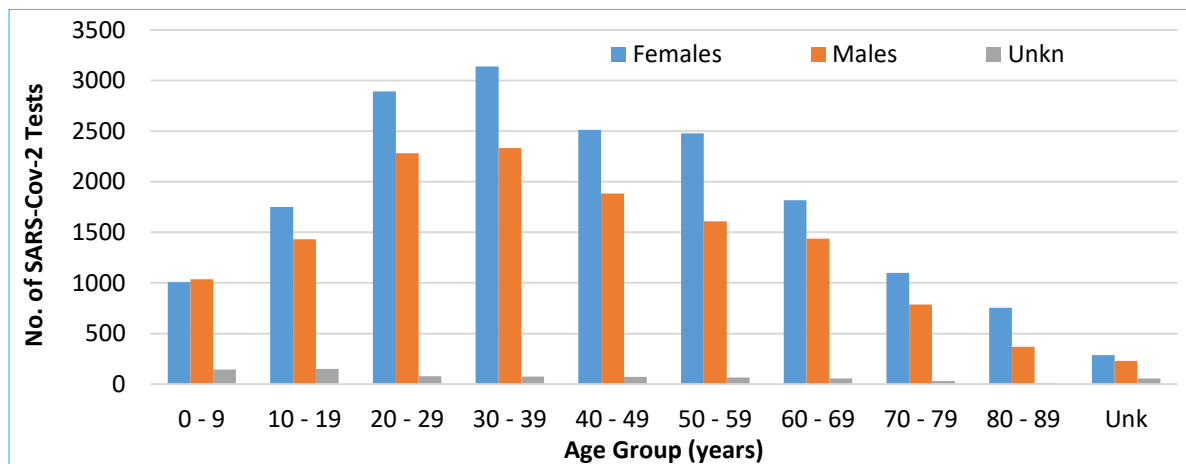


Fig. 4. No. of SARS-Cov-2 public sector tests by age group and gender, as of 21st Feb. 2021

The female population accounted for 55,7% and male population accounted for 42,0%, and 2,3% lacked information on gender.

4.4. Turnaround Time

The table below provides the turnaround time in both public and private laboratories.

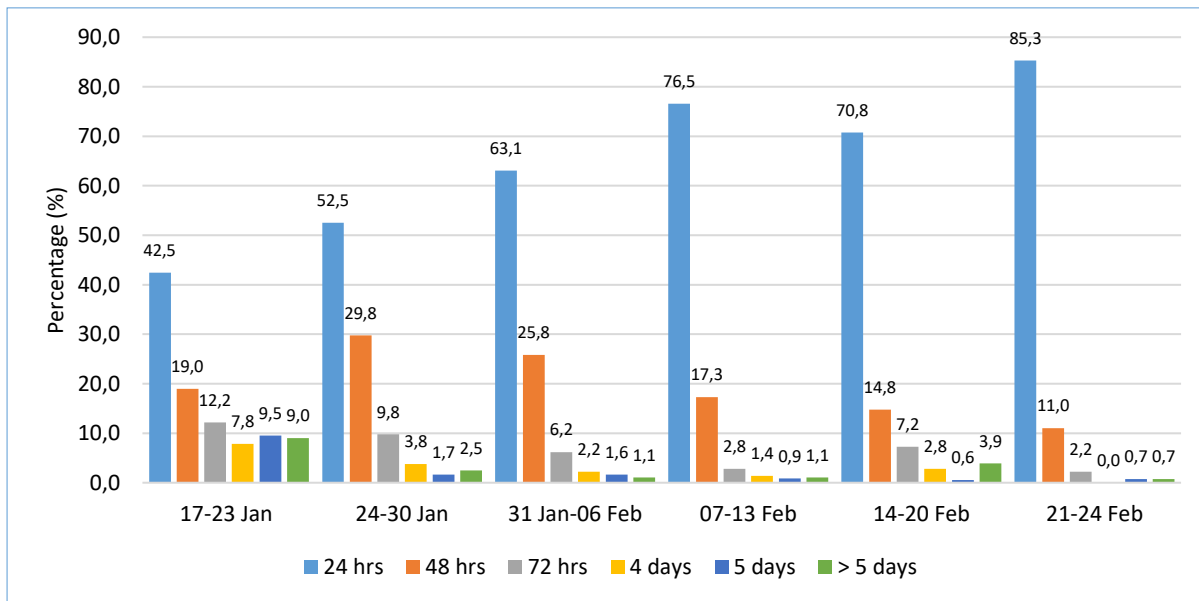


Fig. 5. Turnaround time for SARS-Cov-2 positive results by week as of 24 Feb. 2021

Laboratory results that were available within 24 hours of specimen collection have increased by 14,5%, i.e. from 70,8% in the previous week to 85,3% in the current week. Similarly, there was a 12,2% increase in the results which were available within 48 hours.

4.5. The 7-day moving average of SARS-Cov-2 tests & positivity rate

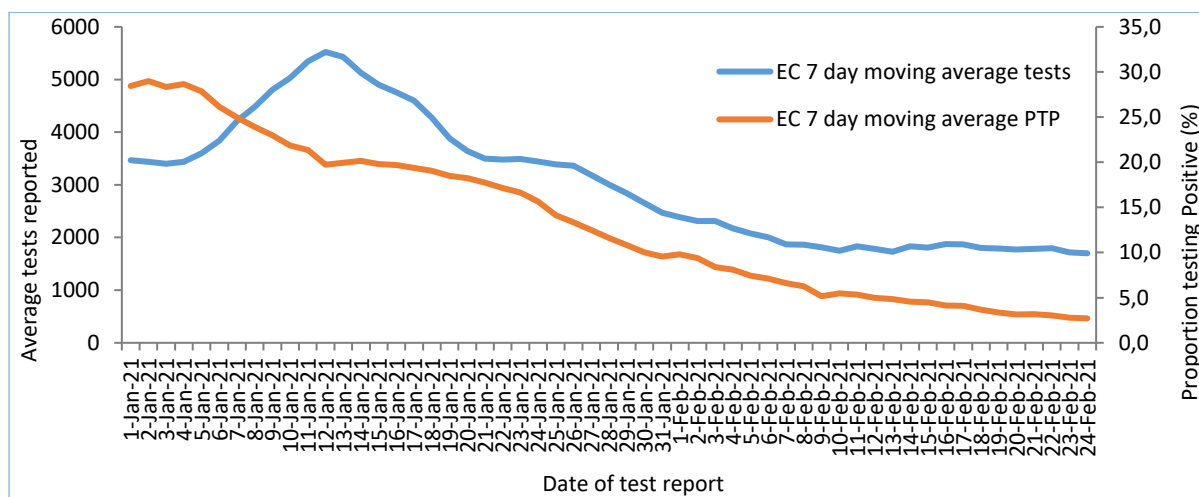


Fig. 6. 7-day moving average for laboratory tests and positivity rate, as of 24 Feb. 2021

The number of tests has declined by 5,7%, i.e. from 1,803 on the 18th February to 1,700 on the 24th of February. The positivity rate has decreased by 27% from 3,7% to 2,7% during the abovementioned period.

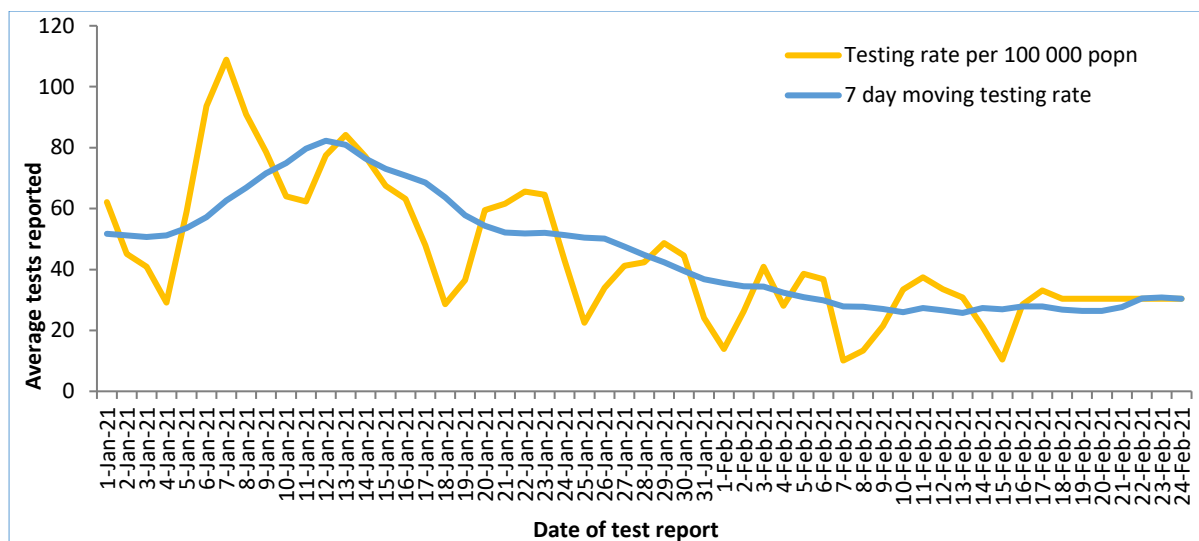


Fig. 7. The 7-day moving average for tests and testing rate, as of 24 Feb. 2021

The seven-day moving average and testing rate has increased by 0% from 30 tests conducted per 100,000 on 18th to 30 tests per 100,000 on 24th February 2021.

5. ACTIVE CASES, INCIDENCE & POSITIVITY RATE

5.1. Active SARS-Cov-2 cases and the cumulative positivity rate

Table 5. Confirmed SARS-Cov-2 cases, incidence & positivity rate, as of 24 Feb. 2020						
District	Population Estimates	Number of Tests	SARS-Cov-2 Cases (ALL)	Active SARS-Cov-2 Cases	SARS-Cov-2 per 100,000 (Active)	Cumulative Positivity Rate
Alfred Nzo	827826	29 909	7930	12	1,4	26,5
Amathole	798067	78 211	19249	73	9,1	24,6
BC Metro	798798	124 834	38641	98	12,3	31,0
Chris Hani	733743	61 753	19464	45	6,1	31,5
Joe Gqabi	343075	27 557	7441	25	7,3	27,0
NM Metro	1210803	162 782	55226	104	8,6	33,9
OR Tambo	1520922	83 161	22396	21	1,4	26,9
Sarah Baartman	480223	86 888	21707	29	6,0	25,0
Imported		0	600	2	0,0	0,0
Unspecified		220 966	1119	21	0,0	0,5
E.Cape	6713457	876 061	193773	430	6,4	22,1

The incidence of active cases was 6,4 cases per 100,000 population. Two (2) districts have an incidence that is less than 5% per 100,000, 5 districts with more than 5 per 100,000 but less than 10 per 100,000. BC Metro was the only district with more than 10 cases per 100,000 population. The cumulative positivity rate was 22,1%. Three (3) districts reported a cumulative positivity rate above 30%.

5.2. Incidence of SARS-Cov-2 cases

The incidence of SARS-Cov-2 has significantly declined in all districts. Since week 2 of the year, there was a decrease in incidence in all districts.

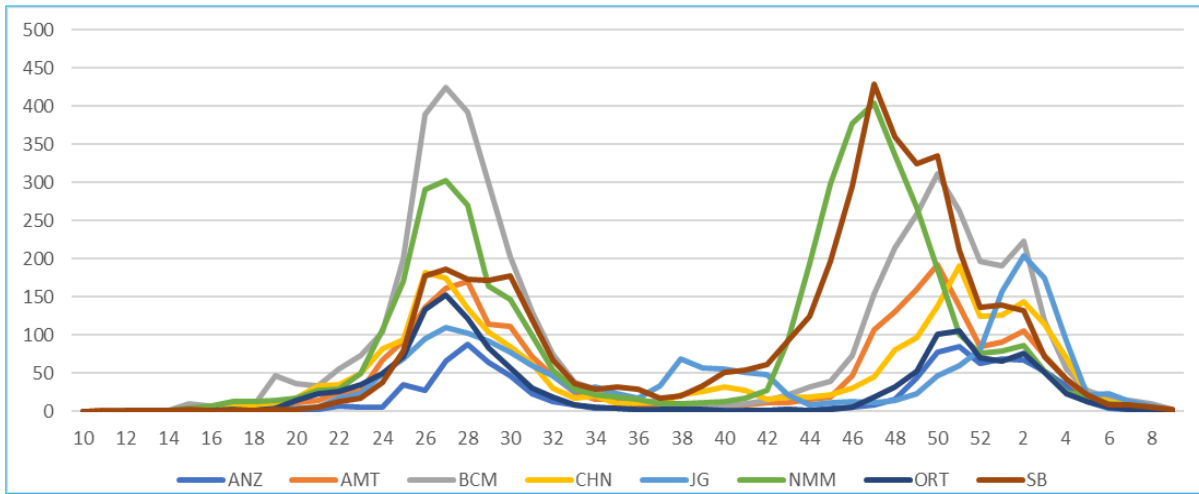


Fig. 8. Incidence of SARS-Cov-2 cases by epidemiological week, as of 24 Feb. 2021

In the past 7 days, the incidence of SARS-Cov-2 decreased by 42,3% from 9,0 cases per 100,000 on the 18th to 6,4 cases per 100,000 on the 24th February (Figure 9). Seven districts reported less than 10 active cases per 100,000 populations. Only BC Metro has more than 10 cases per 100,000 population.

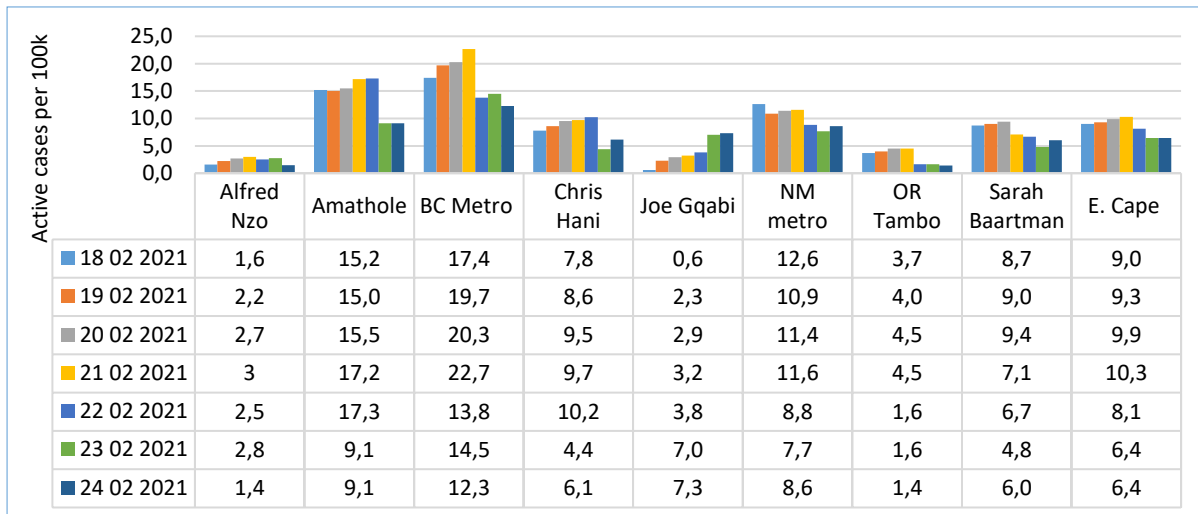


Fig. 9. Incidence of active SARS-Cov-2 (per 100,000) by district date, as of 24 Feb. 2021

The incidence of SARS-Cov-2 was less than 5 cases per 100,000 in 2 districts, i.e. Alfred Nzo and OR Tambo.

5.3. Recovery Rate (%)

The figure below provides the recovery rate over 7 days for each district. The number of recoveries and the recovery rate has significantly increased in all the districts.

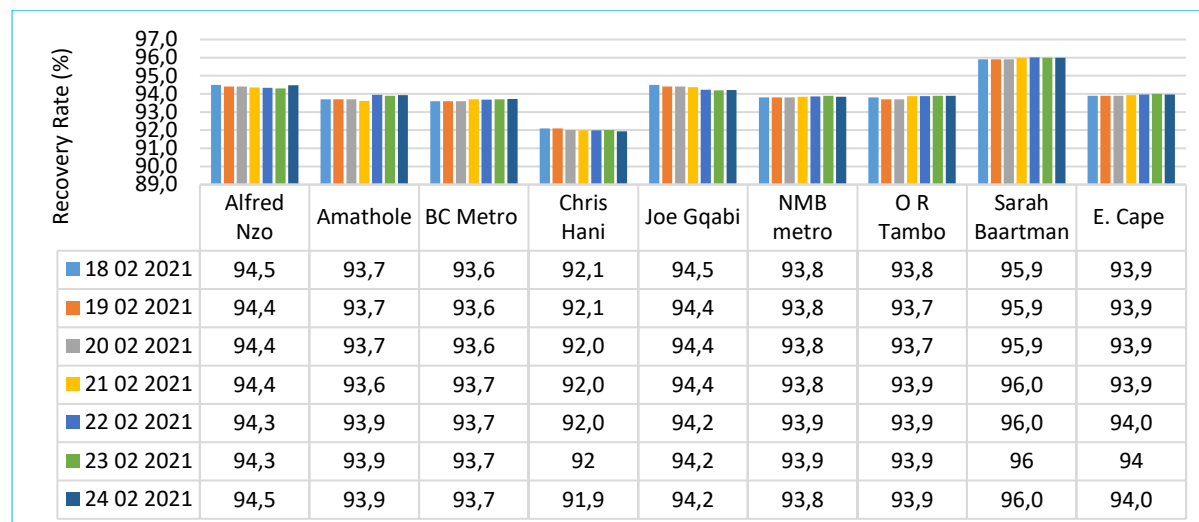


Fig. 10. SARS-Cov-2 Recovery Rate (%) by districts, as of the 24 Feb. 2021 (N=182,074)

The provincial recovery rate remained above 90% over the past 7 days. In the past 5 days, all the districts reported a recovery rate above 90%.

5.4. Mapping of active cases, recoveries and deaths

The map shows the distribution of active cases, recoveries and deaths related to SARS-Cov2 in the province.

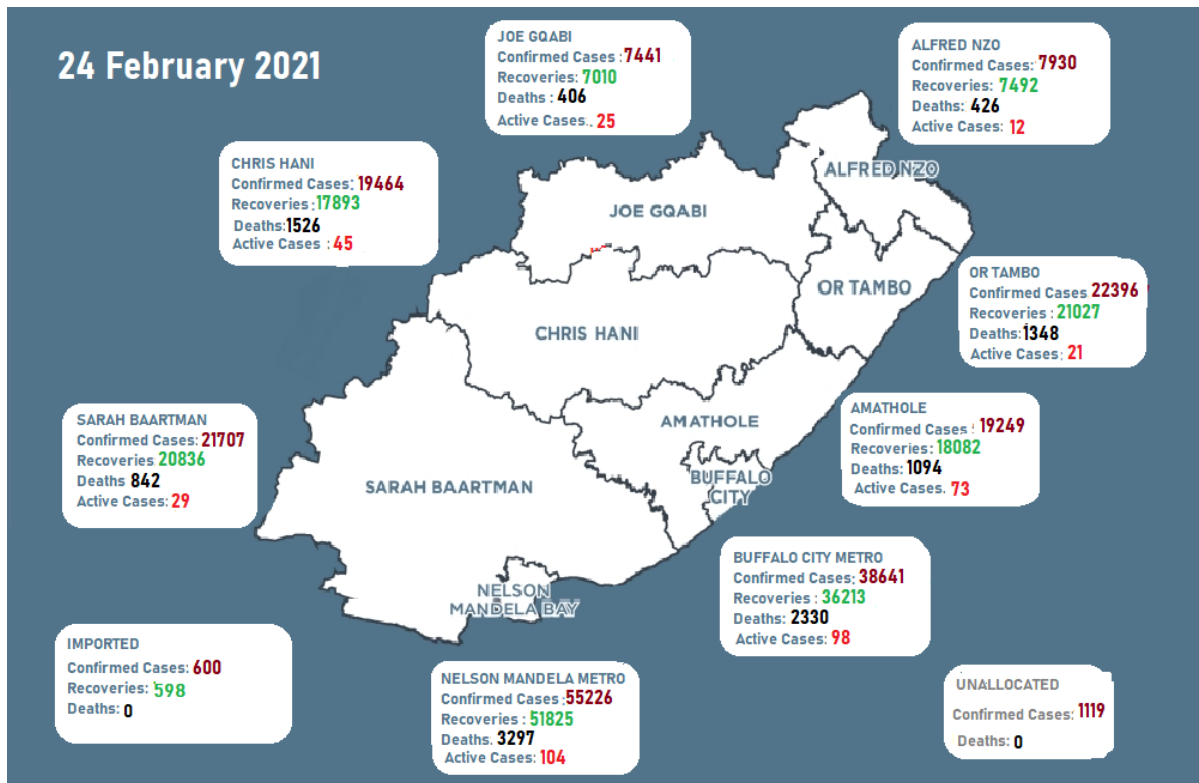


Fig. 11. Number of Covid-19 cases, recoveries and deaths, as of 24 Feb. 2021

6. SARS-COV-2 CASES AND 7-DAY MOVING AVERAGE

The graph below depicts the total number (including cumulative) of cases and the 7-day moving average.

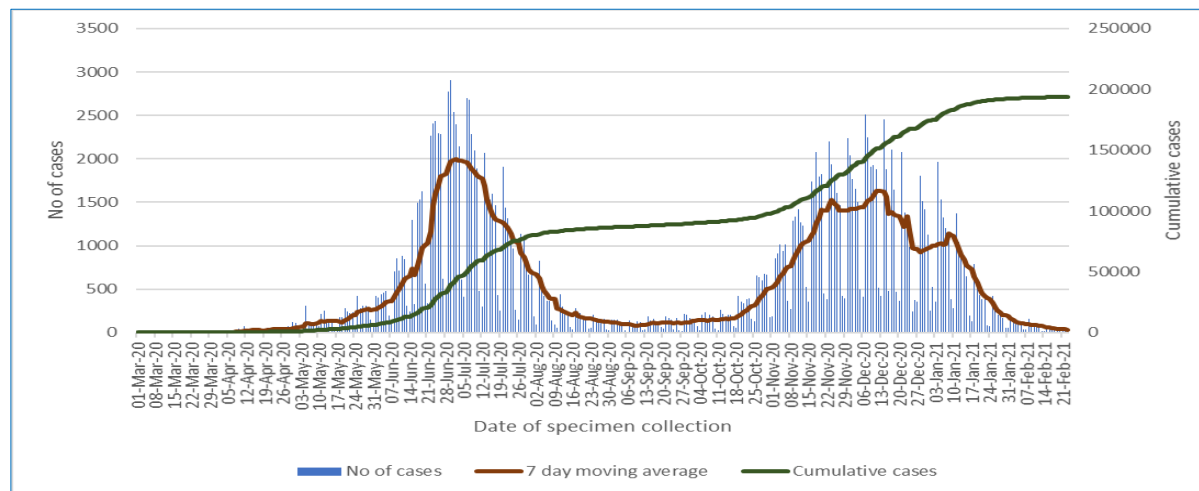


Fig. 12. 7-day moving average for Covid-19 cases by date of collection, as of 24 Feb. 2021

The number of daily newly diagnosed cases increased from the second half of October and peaked in mid-December, and then decreased until to date. The number of cumulative cases appears to have stabilized (known as flattening of the curve).

7. SARS-Cov-2 RELATED MORTALITY

7.1. SARS-Cov-2 related deaths

The table below provides the total number of cases, deaths and mortality rate by the month.

Month	Cases	Percent (%)	Deaths	Percent (%)	Case Fatality Rate (%)	Mortality Rate (per 100,000)
March	13	0.0	1	0.0	7.7	0.0
April	638	0.3	35	0.3	5.5	0.5
May	3282	1.7	285	2.5	8.7	4.2
June	23793	12.3	1035	9.2	4.4	15.4
July	50290	26.0	2033	18.0	4.0	30.3
August	8279	4.3	666	5.9	8.0	9.9
September	2991	1.5	213	1.9	7.1	3.2
October	8625	4.5	287	2.5	3.3	4.3
November	33706	17.4	1708	15.2	5.1	25.4
December	42472	21.9	2764	24.5	6.5	41.2
21-Jan	18129	9.4	1907	16.9	10.5	28.4
21-Feb	1555	0.8	190	1.7	12.2	2.8
Unknown	0	0.0	145	1.3		2.2
Total	193773	100	11269	100	5.8	168

Twenty-two percent (21,9%) of the cases occurred in December, 9,4% in January, and 17,4% in November. The Case Fatality Rate in February was 12,2% and 10,5% in January, and 6,5% in December. This indicates that the highest mortality rate was observed in the past three months.

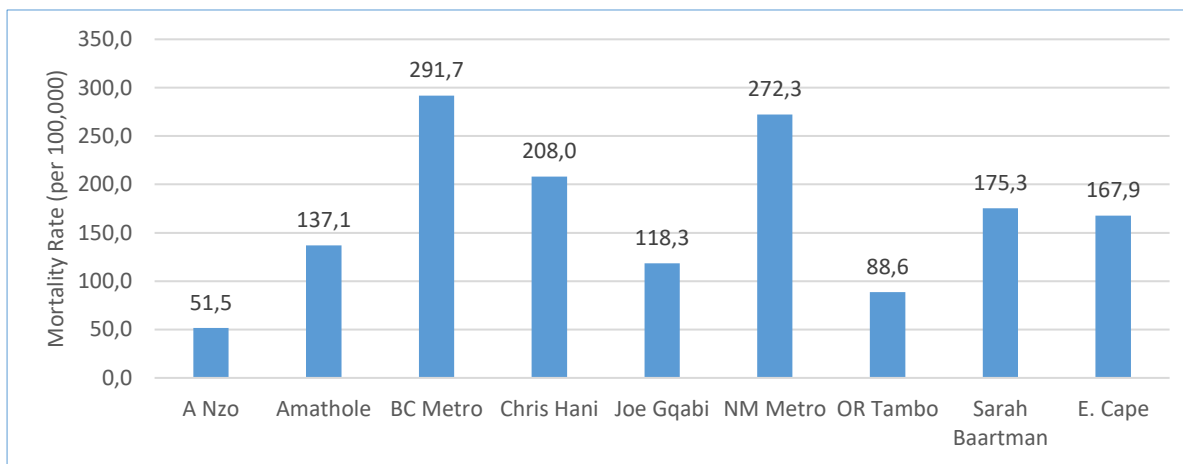


Fig. 13. SARS-Cov-2 related mortality per 100,000 by district, as of 24 Feb. 2021

The mortality rate related to SARS-Cov-2 was 167,9 deaths per 100,000 populations. The highest mortality rate was observed in Buffalo City Metro (291,7 deaths per 100,000) followed by Nelson Mandela Metro (272,3 deaths per 100,000), Chris Hani (208 per 100,000) and Sarah Baartman (175.3 per 100,000).

7.2. Number of reported SARS-Cov-2 related deaths

The figure below depicts the daily deaths and the cumulative number of deaths.

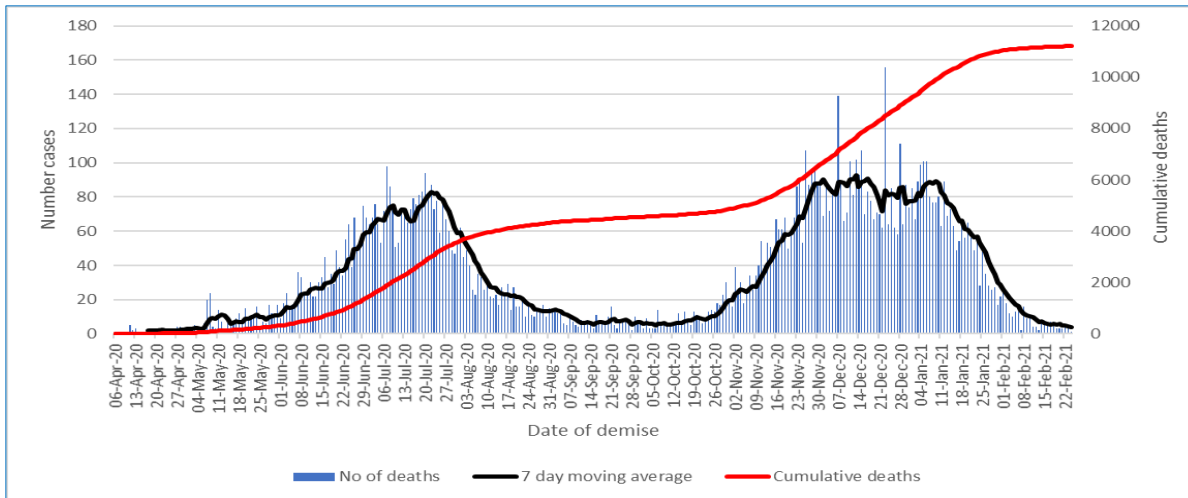


Fig. 14. Daily and cum. SARS-Cov-2 related deaths by date of demise, as of 24 Feb. 2021

The number of daily deaths increased since May 2020 and peaked on the 20th July 2020, then rapidly declined in August and October. In the last week of October, the number of deaths increased and peaked in mid-December. The cumulative number of deaths continues to that it has stabilized. However, there is a need to continue to monitor the reporting of deaths related to SARS-Cov-2 causes.

7.3. Case Fatality Rate by district

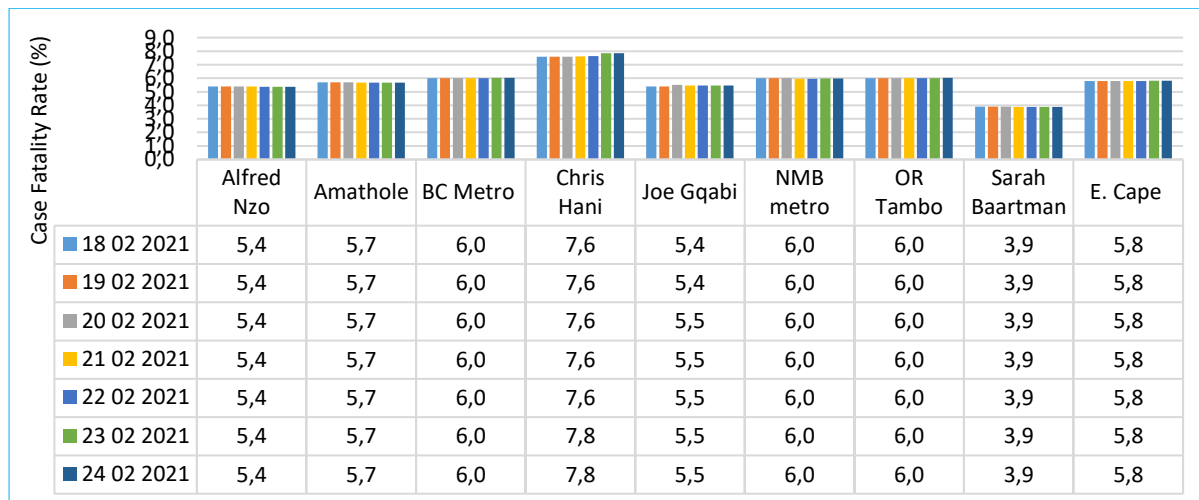


Fig. 15. SARS-Cov-2 Case Fatality Rate (%) by district, as of 24 Feb. 2021 (N=11,269)

Over the past 7 days, the case fatality rate has remained unchanged. The Chris Hani district reported the highest case fatality rate of 7,8%, followed by Buffalo City Metro (6.0%), Nelson Mandela Metro (6.0%), OR Tambo (6.0%), Amathole (5.7%), Joe Gqabi (5,5%), Alfred Nzo (5.4%) the lowest being Sarah Baartman by 3.9%.

7.4. Case Fatality Rate by age group

The figure below provides the case fatality rate for both males and females.

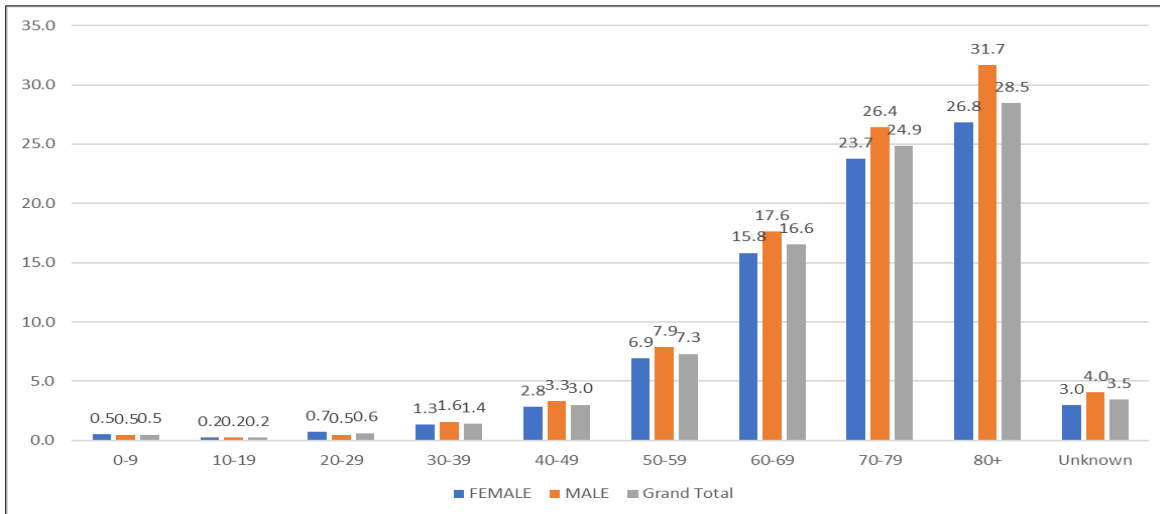


Fig. 16. SARS-Cov-2 related Case Fatality Rate (%) by age group, as of 24 Feb. 2021

The case fatality rate increases with increasing age. Since the beginning of the pandemic, the younger population had a low case fatality rate compared to the older population that had an increased case fatality rate. The male population had a higher case fatality rate compared to the female population.

7.5. Post-mortem testing

The “Guidelines on Post Mortem Testing for Natural Deaths” requires the collection of specimens for post-mortem testing from all individuals who demised outside the health facilities due to natural causes.

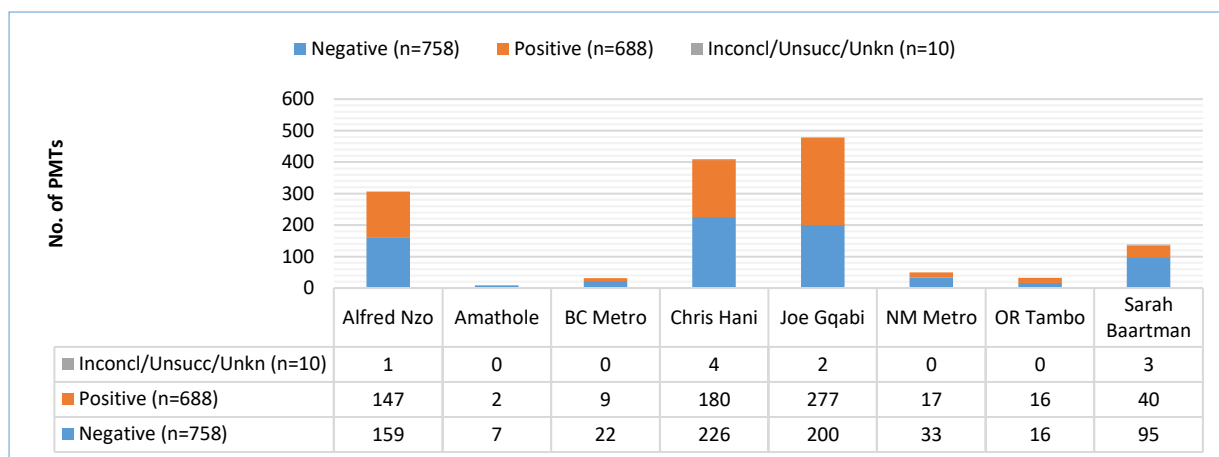


Fig. 17. No. of post-mortem test results by district, as of 24 Feb. 2020 (PMTs =1,456)

The number of post-mortem tests done by the public sector laboratories was 1,456. Eighty-two per cent (82,2%) of the tests were done in Alfred Nzo, Chris Hani and Joe Gqabi.

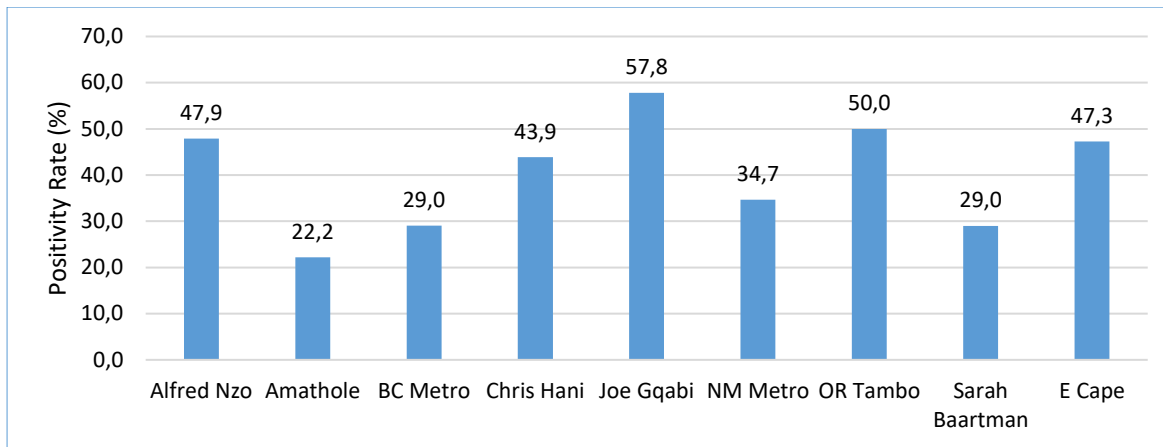


Fig. 18. Post-mortem SARS-Cov-2 positivity rate by district, as of 24th February 2021

Nearly about half of the post-mortem tests were positive for SARS-Cov-2. This shows high levels of SARS-Cov-2 infections among those individuals who died at home or outside the health facilities. , 47,3% of the tests were positivity for SARS-Cov-2. The positivity rate was more than 20% in all the districts. Districts like Joe Gqabi and OR Tambo reported

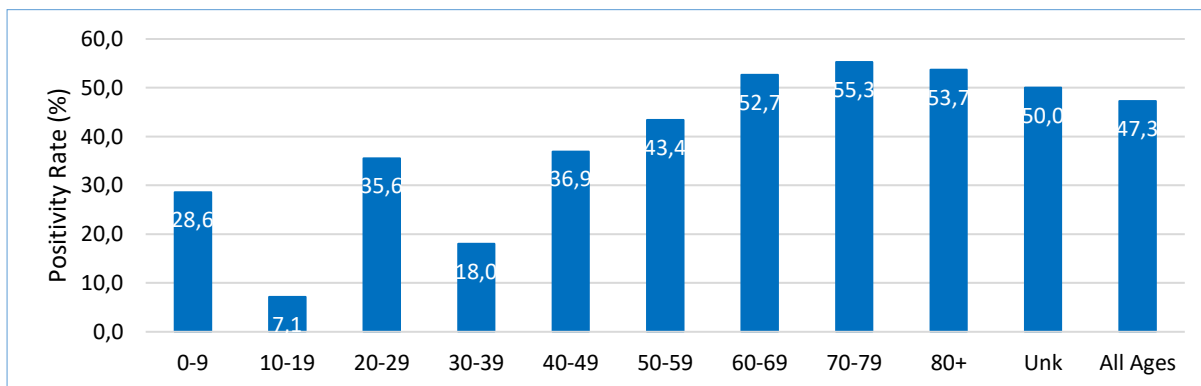


Fig. 19. SARS-Cov-2 post-mortem positivity rate by age group, as of 24th Feb. 2021

Sixty-six percent (65,5%) of the post mortems were done among the elderly population from 60 years and above. The positivity rate among that age group was 50% and above.

7.6. Deaths by health facilities

The figure below provides the number of deaths by hospital or place. Only hospitals or places with a minimum of 24 deaths are included in the figure below. Nearly most of the hospitals including both private and public have reported a case or more, whether private or public.

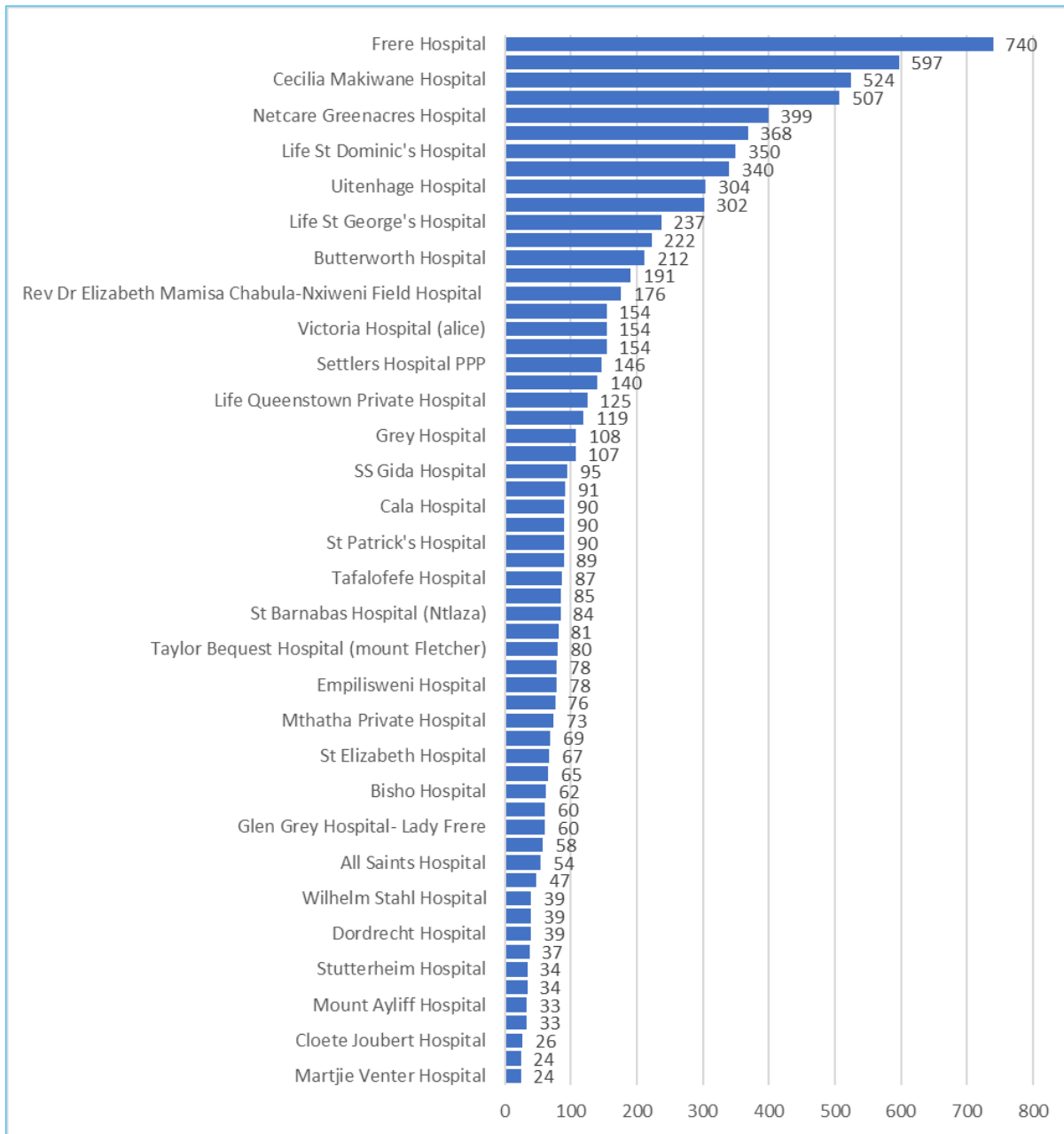


Fig. 20. No. of SARS-Cov-2 related deaths by the facility, as of 24 Feb. 2021

About 17 hospitals reported more than 60% of the deaths, i.e. 9 public and 7 private hospitals. The hospitals include Frere, Cecilia Makiwane, Dorah Nginza, Livingstone, Life St. Dominics, Netcare Greenacres, Mercantile, Uitenhage, Frontier, Mthatha Regional, Life St. Georges, Netcare Cuyler, Life EL Private, Life Queenstown, Butterworth and Rev. Dr. EM Chabula-Nxiweni Field Hospitals.

6. HEALTHCARE WORKERS

6.1. Cases and deaths among healthcare workers (HCWs)

As of 23rd February, 11,396 HCWs tested positive for SARS-Cov-2 and 292 persons demised.

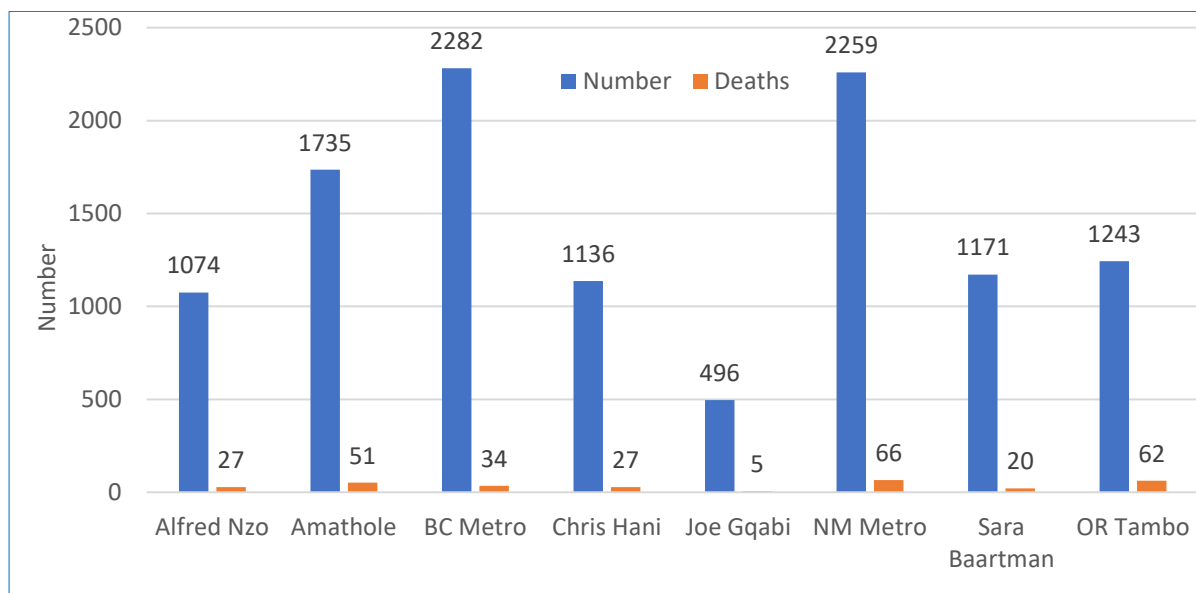


Fig. 21. SARS-Cov-2 positive Healthcare Workers, as on 23 Feb. 2021 (N = 11,396)

The number of healthcare workers who tested positive for SARS-Cov-2 in Buffalo City Metro was 2,282 (34 deaths), Nelson Mandela Metro 2,259 (66 deaths), Amathole 1,735 (51 deaths), Chris Hani 1,136 (27 deaths), OR Tambo 1243 (62 deaths), Sarah Baartman 1171 (20 deaths) and Alfred Nzo (1074 cases, with 27 deaths).

6.2. SARS-Cov-2 Cases by job category

The table below provides the number of selected healthcare professionals employed by the State and SARS-Cov-2 cases by job categories, and the positivity rate of that job category.

	Number	Cases	Positivity Rate (%)
Admin	12434	746	6,0
Allied Professionals	3041	227	7,5
Doctors & Clinical Assoc	2369	430	18,2
Nurses	20650	4671	22,6
Emergency Medical Services	2498	295	11,8

The positivity rate among the nurses was 22,6%, followed by doctors and clinical associates (18.2%), allied professionals (7.5%), EMS (11.8%), and admin personnel (6.0%). The positivity rates among healthcare workers have a negative impact on patient safety, staff morale and confidence, and the capacity of the State to provide quality health services to the population.

6.3. Admissions of healthcare workers

The analysis of the admissions of the healthcare workers was 1,029 healthcare workers who admitted to the hospitals in the Eastern Cape. The source of the data was DATCOV.

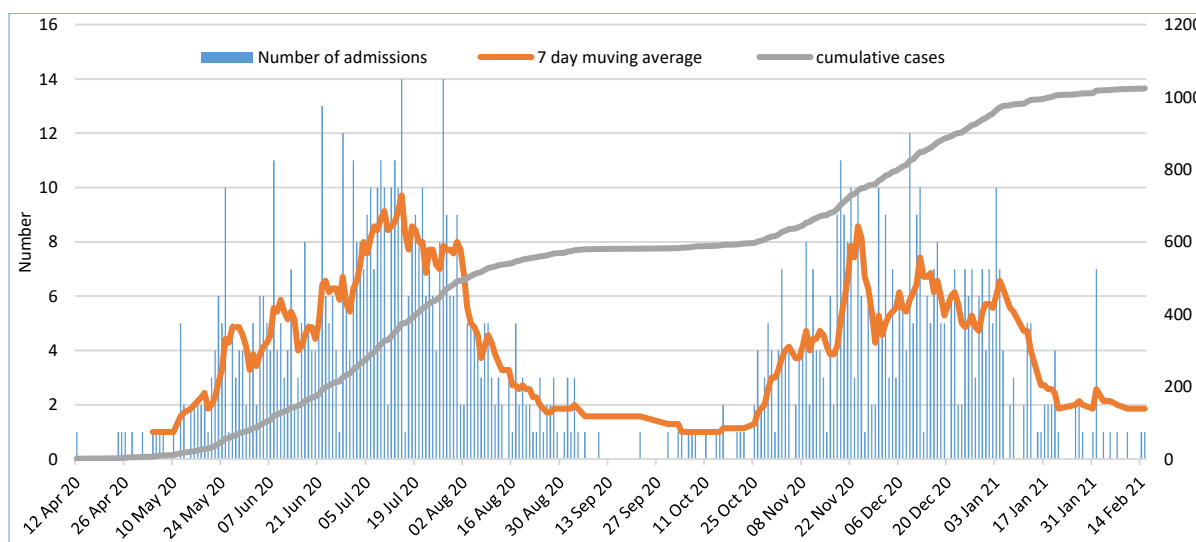


Fig. 22. No. of SARS-Cov-2 related admissions of healthcare workers, as of 19th Feb. 2021

The abovementioned figure shows the number of admissions, 7-day moving average and cumulative cases among healthcare workers. Figure 19 appear to mimic the epi-curve and admissions of the general population in both the first and the second waves.

6.4. Case Fatality Rate (%) among HCWs

The figure below provides the cases fatality rate among all healthcare workers.

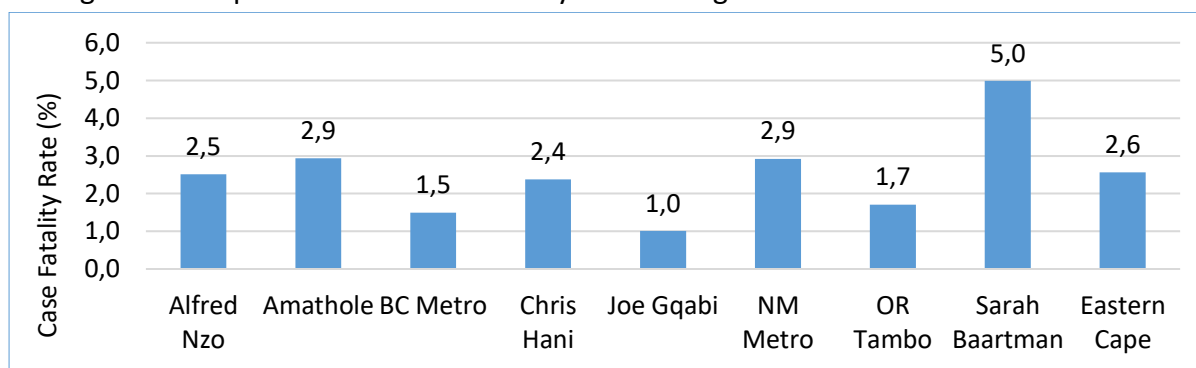


Fig. 23. SARS-Cov-2 Case Fatality Rate (%) among HCWs, as of 23 Feb. 2021 (N=292)

The case fatality rate among healthcare workers was 2.6%. The case fatality rate was above 1% in all the districts in the province. OR Tambo reported the highest case fatality rate, followed by Nelson Mandela Metro, Amathole, Alfred Nzo, Chris Hani and Sarah Baartman. The case fatality rate of less than 2% was observed in three districts, i.e. Joe Gqabi, BC Metro and Sarah Baartman.

7. Hospitalization and outcomes

7.1. Admissions and outcomes

The cumulative number of SARS-Cov-2 hospitalizations is 31,303 (DATCOV). Fifty-nine percent (58,7%) of the hospitalizations occurred in the Metros.

District	Public	Private	Total	Percentage
Alfred Nzo	1661	91	1752	5.6
Amathole	2347	0	2347	7.5
BC Metro	4274	3077	7351	23.5
Chris Hani	2538	735	3273	10.5
Joe Gqabi	694	0	694	2.2
NM Metro	6634	4382	11016	35.2
O R Tambo	2274	873	3147	10.1
Sarah Baartman	1587	136	1723	5.5
Total	22009	9294	31303	100

Of the reported hospitalizations, 22,009 (70,3%) occurred in public sector and 9,294 (29,7%) occurred in private sector health facilities.

Eastern Cape Total	Private	Public	Total
Died	2243	7100	9331
Discharged alive	6859	13161	20020
In Hospital	160	257	417
Transfer to another facility	32	1491	1523
ICU	52	2	54
High care	9	4	13
General	95	211	306
On Oxygen	40	82	122
Ventilated	17	4	21

Of all the hospitalized cases, 64,0% of hospitalized patients were discharged alive and 65,7% of the reported discharges were from the public sector. Over 29,8% of hospitalized cases demised due to SARS-Cov-2 related causes with 76,1% of those reported deaths occurring in public sector facilities.

Of the 417 current admissions, 306 (73,4%) were admitted in the general ward, 54 (12,9%) in ICU and 13 (3,1%) in High Care. And 122 (29,3%) of current admissions were on oxygen and 21 (5,0%) were on ventilation.

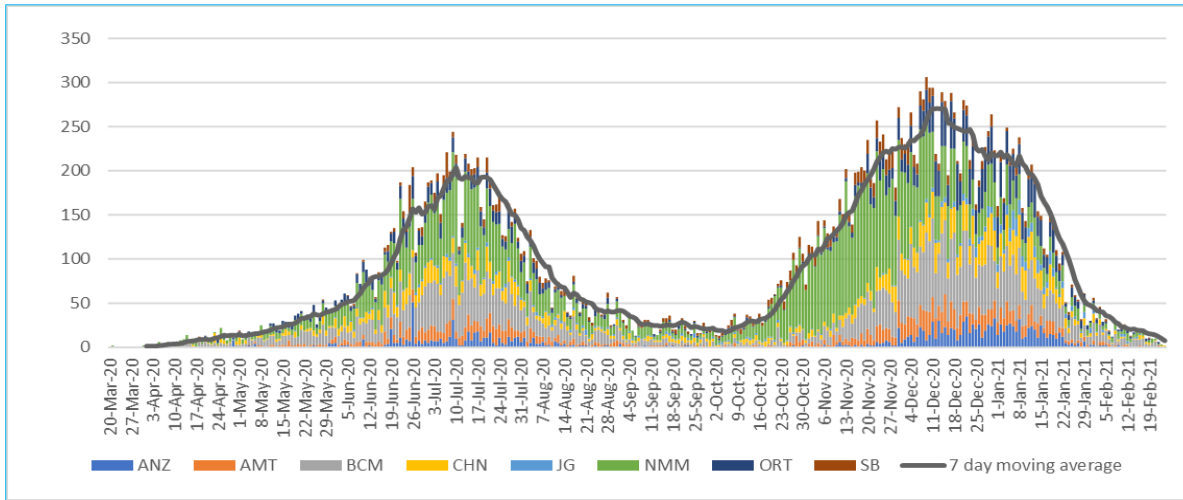


Fig. 24. Average (7 days moving) daily admissions by districts, as of 24 Feb. 2021 (DATCOV)

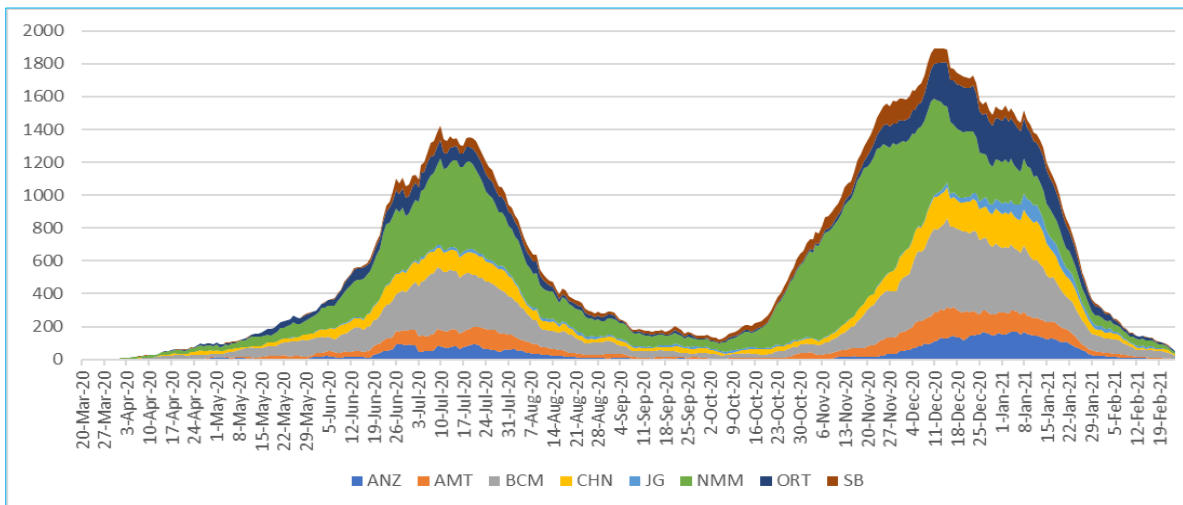


Fig. 25. No. of hospitalizations by date of admission for each district, as of 24 Feb. 2021

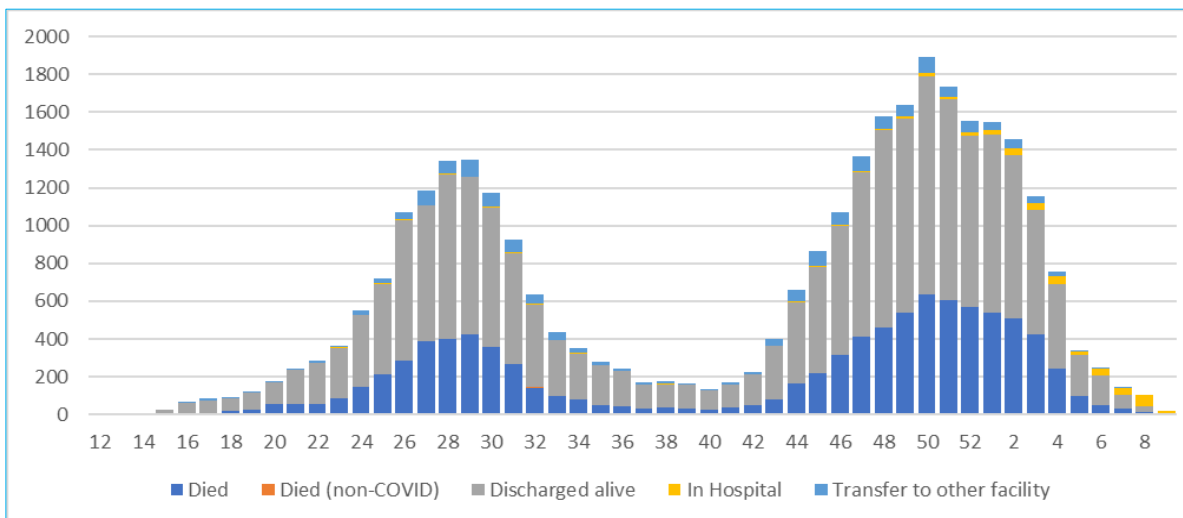


Fig. 26. Hospitalizations & outcomes by admission week, as of 24 Feb. 2021 (DATCOV)

The number of currently hospitalized patients remained high during the last part of the year and started to decline thereafter.

7.2. Co-morbidities among admitted cases and deaths

The most common co-morbidities among the hospitalized SARS-Cov-2 patients were hypertension (37,7%) and diabetes (25,1%) among hospitalized SARS-Cov-2 cases. Two other commonly reported co-morbidities HIV (6,9%) and obesity (5,4%).

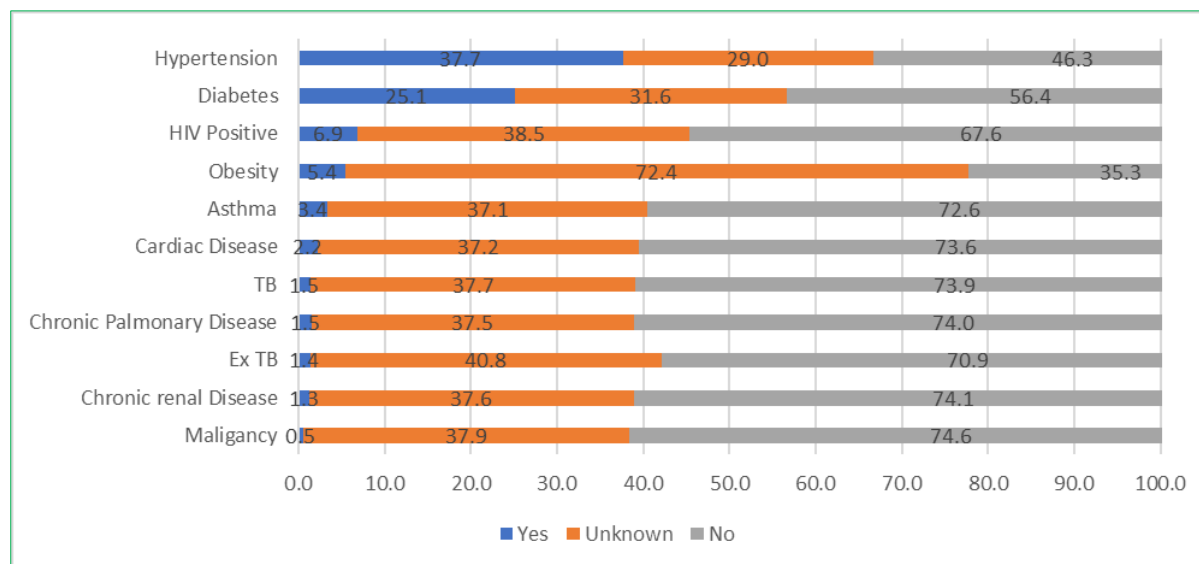


Fig. 27. Co-morbidities among SARS-Cov-2 hospitalizations, as of 24 Feb .2021 (DATCOV)

A significant percentage of hospitalized patients did not have co-morbidities. This may have resulted in the under-estimation of the burden of co-morbidities among hospitalized cases.

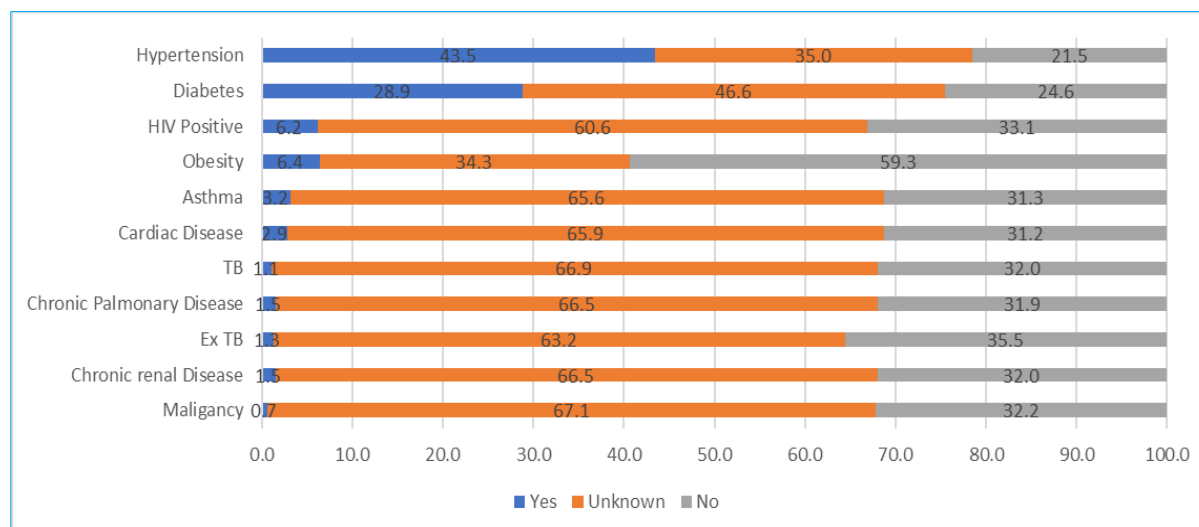


Fig. 28. Co-morbidities among SARS-Cov-2 cases who demised, as of 24 Feb. 2021 (DATCOV)

The most common comorbidities among those cases that demised in the hospital include hypertension (43,5%) and diabetes (28,9%). Other 4 co-morbidities were reported, i.e. obesity (6,4%), HIV (6,2%), asthma (3,2%) and cardiac diseases (2,9%).

8. KEY INTERVENTIONS

There are key issues, which require improvement;

- Strengthen surveillance of SARS-Cov-2 including collection and testing of specimens
- Prioritize contact tracing and monitoring to minimize the spread of the infections
- Isolate positive cases and quarantine contacts to minimize transmission
- Promote the use of prevention measures against SARS-Cov-2, i.e. wearing of masks, social distancing, and frequent handwashing.



3 577 773
No Screened



876 061
Total Lab Tests



193 773
Positive Cases



182 074
Recoveries



11 269
Deaths

DISTRICT	TOTAL SCREENED	TOTAL TESTED	TOTAL CASES	RECOVERIES	DEATHS	ACTIVE CASES	AREAS
ALFRED NZO	694 706	29 909	7 930	7 492	426	12	Badibanise,Bhakubha,Bizana,Brooksnek,Cedarville,Chithwa,Dutyini,Emanxiwini,Ezinteteni,Kokstad,Lucingweni,Matluti, Mandileni , Matatiele,Mount Ayliff, Mount Frere , Ndlantana, Ngcingo , Ntabakhulu, Sugar Bush, Tabankulu
AMATHOLE	658 126	78 211	19 249	18 082	1094	73	Adelaide, Alice, Bolotwa, Butterworth, Cathcart, Centane, Cuba, Debe Nek, Dikana, Elliotdale, Ethafeni, Frankfort, Fort Beaufort, Ibika, Idutywa, Keiskammahoek, Willowale, Lower Mbhangcolo,Debe Nek, Mgababa, Nyaniso, Peddie
BUFFALO CITY METRO	210 367	124 834	38 641	36 213	2330	98	Abbottsford, Amalinda , Beacon Bay, Bisho, Braelynn, Buffalo Flats, Dimbaza, Duncan Village, East London, Ginsberg, Gonubie, Greenfields, Haven Hills, King William's Town, Mamata, Mdantsane, Masingata, Mantlanieni, Nahoon, Ndevana, Needs Camp, Parkside, Selbourne, Sunnyridge, Sunset Bay,Tshatshu, Vincent, West Bank, Zwelitsha
CHRIS HANI	515 346	61 753	19 464	17 893	1526	45	Bankies, Dordrecht, Dukathole, Ekunene, Ezibeleni, Kwanobuhle, Mkwangele, Madeira Park, New Rest, Ngqobo, Nkonyama, Popcorn Valley, Qebe, Qoqodala, Queenstown, Sigadleni, Vaalbank, Sada, Middleburg, Thornhill, Ndzamela, Mlungisi,Westbourne,Ntlonze, Maya Village,Ekuphumuleni, TopTown, Vleiport, Zola
JOE GQABI	87 855	27 557	7 441	7 010	406	25	Aliwal North, Barkley East, Bhodi, Land Camp, Ugie, Inglewood, Maclear, Sotomzi, Sunduza,Robbenn,Venterstad
NELSON MANDELA METRO	856 883	162 782	55 226	51 825	3297	104	Algoa Park, Betheldorp, Bloemendal, Bluewater Bay, Boosens Park, Cotswold, Cuyler, Daleview, Despatch, Fernglen Port, Gelvandale, Govan Mbeki, Heath Park, Helenvale, Jacksonville, Joe Slovo, Kabega Park, Kamma Park, Kamvelihle, Khayalethu, Kleinskool, Kwa Dwesi, Kwa-Magxaki, Kwanobuhle, Kwanoxolo, KwaZakhele, Lovemore Heights, Missionvale, Motherwell, Mount Croix, New Brighton, Newton Park, North End, Port Elizabeth, Rowallan Park, Salt Lake, Sardinia Bay, Schauderville, Sherwood, Silvertown, Soweto-On-Sea, Steve Tshwete, Summerstrand, Tamboville, Uitenhage, Veeplaas, Walmer, West End, Westering, Zwide, Lorraine, Hillside, Daleview
OR TAMBO	265 613	83 161	22 396	21 027	1348	21	Gomora, Lutatweni, Machibi, Majola, Mandilini, New Payne Ngqeleni, Ntsimbini, Old Payne, Libode, Lusikisiki, Mqanduli, Tombo, Marhewini, Mpikwana,Bhongweni,Cibeni, Flagstaff,Magcakeni,Ngangelizwe, Ngganda,Tyebelana, Pollar Park, Tabase Mission, Slovo Park, Southernwood, Waterfall Park, Zandukwana,Zimbane, Ziphunzana
SARAH BAARTMAN	288 877	86 888	21 707	20 836	842	29	Aberdeen, Alexandria, Graaf-Reinet, Grahamstown, Jeffrey's Bay, Jourbertina, Humansdorp, Parson, St. Francis Bay, Kirkwood, Lotusville, Bergendal, Bratenfel, Joza, Santaville, Somerset East, Thornhill, Willomore
IMPORTED*	-	0	600	598	0	2	Bloemfontein, Ceres, Cape Town, Dunoan, Fishoek, George, Green Point, Gugulethu, Hout Bay, Langa, Khayelitsha, Knysna, Phillipi, Stellenbosch, Strand
PENDING	-	220 966	1119	1098	0	21	
GRAND TOTALS	3 577 773	876 061	193 773	182 074	11 269	430	

ACKNOWLEDGEMENTS

- The epidemiological and surveillance functions continue because of the strong partnership between the following stakeholders;
- WHO supported epidemiologists, biostatisticians, and technical support
- The National Institute for Communicable Diseases (NICD) provided the province with epidemiologists and technical support
- The data analyst from TB/HIV Care has supported data management, mapping of the cases and other functions in the department
- Right to Care assists in mapping the cases in different areas in the province
- Centre for Disease Control (Atlanta-Pretoria) provided the Department with an epidemiologist and a statistician to support the province
- The Department of Health, both the National and Provincial Department of Health re-purposed the employees to focus on the control and prevention of the pandemic
- Laboratories; National Health Laboratory Services, Pathcare and Ampath for prompt and regular reporting of SARS-Cov-2 newly diagnosed cases.