

ISEBE LEMFUNDO LEMPUMA KOLONI
EASTERN CAPE EDUCATION DEPARTMENT
OOS-KAAP ONDERWYSDEPARTEMENT

IIMVIWO ZEBANGA LESHUMI ELINANYE
GRADE 11 EXAMINATIONS
GRAAD 11-EKSAMEN

NOVEMBER 2008

CONSUMER STUDIES

IXESHA: 3 iiyure
AMANQAKU: 200

TIME: 3 hours
MARKS: 200

TYD: 3 uur
PUNTE: 200

Write on the cover of your answer book, after the word "Subject" –
CONSUMER STUDIES

This question paper consists of 20 pages + an answer sheet.

INSTRUCTIONS AND INFORMATION

1. SECTIONS A, B, C and D are COMPULSORY. Choose ONE question from SECTION E, according to the practical option you selected.
2. SECTION A must be answered on the ANSWER SHEET provided and should be placed in the BACK of the ANSWER BOOK.
3. Number the answers correctly to the numbering system used in this question paper.
4. Start each question on a NEW page.
5. Write neatly and clearly.

SECTION A**QUESTION 1****1.1 MULTIPLE-CHOICE QUESTIONS**

Various possible options are provided as answers to the following questions. Choose the correct answer and make a cross (X) over the letter (A – D) next to the question number (1.1.1 – 1.1.10) on the ANSWER SHEET. No marks will be awarded if more than ONE cross (X) appears for answer.

1.1.1 During the warm summer months, Mali sweats a lot. Identify the most suitable fibre for her sheets:

- A Polyster
 - B Polyter cotton
 - C Nylon
 - D Cotton
- (2)

1.1.2 Texture can be described as ...

- A the relationship between objects.
 - B the repetition of colours.
 - C the appearance and feel of a surface.
 - D the basis of a design.
- (2)

1.1.3 Value of colour refers to the ...

- A lightness or darkness of colour.
 - B brightness or darkness of colour.
 - C lightness or intensity of colour.
 - D intensity or darkness of colour.
- (2)

1.1.4 Exclusive fashions are more often found in ...

- A departmental stores.
 - B chain stores.
 - C hypermarkets.
 - D speciality stores.
- (2)

1.1.5 One gram fat gives ... kilojoules.

- A 17
 - B 20
 - C 38
 - D 22
- (2)

1.1.6 The building blocks of proteins are ...

- A amino acids.
- B essential amino acids.
- C non-essential amino acids.
- D the biological value of proteins. (2)

1.1.7 To create an illusion of height in a room, the following line can be used:

- A Horizontal
- B Curved
- C Vertical
- D Diagonal (2)

1.1.8 A colour combination that makes a room look warmer is ...

- A purple and blue.
- B green and blue-green.
- C orange-yellow and red-purple.
- D blue-purple and green. (2)

1.1.9 The background between objects is ...

- A form.
- B space.
- C texture.
- D rhythm. (2)

1.1.10 Food spoilage may be caused by ...

- A adding salt or chemical preservatives.
 - B thawing meat at room temperature.
 - C inactivating food enzymes.
 - D using low temperatures. (2)
- (10 x 2) (20)

1.2 ARRANGING ITEM

Zizipho and Vuyo should follow the correct steps in budgeting. Put the budgeting steps in the order in which you would carry them out. Write only the letters in order of occurrence on the answer sheet.

- A List your income.
- B Evaluate your budget and make adjustments.
- C Assess your needs and set goals.
- D Estimate and list your expenditure.
- E Calculate the difference between your estimated and real expenditures. (5)

1.3 MATCHING ITEMS

Match the consumer organisations or agencies listed in COLUMN A to the description in COLUMN B. Draw a cross (X) over the correct letter on your answer sheet.

COLUMN A CONSUMER ORGANISATIONS AND AGENCIES	COLUMN B DESCRIPTION
1.3.1 South African National Consumers Union	A A committee that looks into all unfair business practices, and is appointed by the Minister of Trade and Industry
1.3.2 Ombudsman	B A group that tests products and uses certification marks to promote quality
1.3.3 The South African Bureau of Standards (SABS)	C A committee that builds consumer awareness of rights and responsibilities, and launches campaigns to educate, inform and protect
1.3.4 Estate Agency Affairs Board	D Handles complaints about the conduct of estate agents – and anyone acting in the capacity of an estate agent
1.3.5 National Consumers Forum	E A committee established whose goal it is to ensure quality of life as well as good quality of goods and services
	F Any unresolved dispute with your insurer, can be sent to this office
	G Legal advice on low cost housing

(5 x 2) (10)

- 1.4 Choose from COLUMN B the functions of nutrients that matches the nutrients from COLUMN A. Draw a cross (X) over the correct letter on your answer sheet.

COLUMN A NUTRIENTS	COLUMN B FUNCTIONS
1.4.1 Vitamins	A Is needed by the body for growth of new cells and the repair of existing cells
1.4.2 Carbohydrates	B Forms an insulating layer beneath the skin to help preserve body heat
1.4.3 Iron	C Is needed by the body for normal growth, development and maintenance of life
1.4.4 Calcium	D Are mainly used to provide energy
1.4.5 Protein	E Is a component of haemoglobin and myoglobin
	F Enhances strong teeth and bones
	G Prevents the clotting of blood

(5 x 1) (5)

[40]

TOTAL SECTION A: 40

SECTION B: FOOD AND NUTRITION**QUESTION 2**

2.1 Read the case study below and answer the questions that follow:

The Nel family was invited to their friends new restaurant's opening. The following dishes were served: chicken pie, carrot salad, lamb stew, green beans and coffee. Later that evening some of their friends showed symptoms of food poisoning.

2.1.1 Identify the pathogenic organism that causes food poisoning. (2)

2.1.2 Name TWO symptoms of food poisoning. (2)

2.1.3 Identify from the case study the food examples that can cause food poisoning. (2)

2.1.4 Give FOUR precautionary measures that the owner of the restaurant must take to avoid the same problem. (4)

2.2 Your grandfather is coming to live with your family. Suggest ways of selecting good balanced meals to your grandfather. (4)

2.3 Name and explain THREE types of food outlets. Tabulate your answer as follows:

FOOD OUTLETS	EXPLANATION
•	
•	
•	

(3 x 2) (6)

2.4 List SEVEN guidelines that a pregnant woman should take into consideration in order to be healthy. (7)

2.5 Study the information below and answer the questions that follow:

FAMILY 1	Marie and her teenage grandson live in an informal settlement. She relies on a state pension of R870,00 per month.
FAMILY 2	Natalie buys anything that is fresh and good for her family. Her teenage daughters eat regularly at various fast foods outlets.
FAMILY 3	Zizi usually prepares traditional meals favouring fish and fresh vegetables, however her 16-year-old son purchases his lunch each day from the local vendors.

Refer to the table and answer the questions:

Food per 100 g	Energy (kcal/kJ)	Protein (g)	Fat (g)	Calcium (mg)
1. Pilchards sardines in tomato sauce	470	18,9	2,8	370
2. Beef	1044	16,8	20,5	7
3. Chicken	954	17,6	17,7	10

2.5.1 Select the food that best meets the nutritional needs of Marie's growing 14-year-old grandson. (2)

2.5.2 Motivate your choice of the above selection in QUESTION 2.5.1. (3 x 2) (6)

2.5.3 Give TWO other factors that would influence her selection. (2)

2.6 Explain the importance of fibre in a diet. Give THREE advantages. (3)
[40]

TOTAL SECTION B: 40

SECTION C: CLOTHING

QUESTION 3

3.1 Study the jacket below and answer the questions that follow:



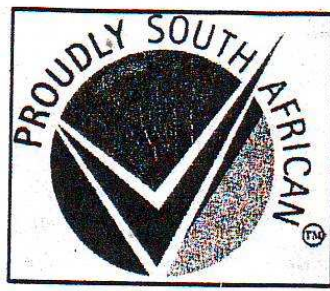
3.1.1 Identify the types of line and give an example of each. (3 x 2) (6)

3.1.2 Explain the effect of each line on figure shapes. (3 x 2) (6)

Tabulate your answer as follows:

3.1.1 TYPES OF LINE	EXAMPLE	3.1.2 EFFECT
• (1)	• (1)	• (2)
• (1)	• (1)	• (2)
• (1)	• (1)	• (2)

3.2 “Proudly South-African”



Explain why consumers are encouraged to buy products with the above logo. (2)

3.3 Discuss guidelines for the following person's choice of clothing to flatter their figures:

3.3.1 protruding tummy (4)

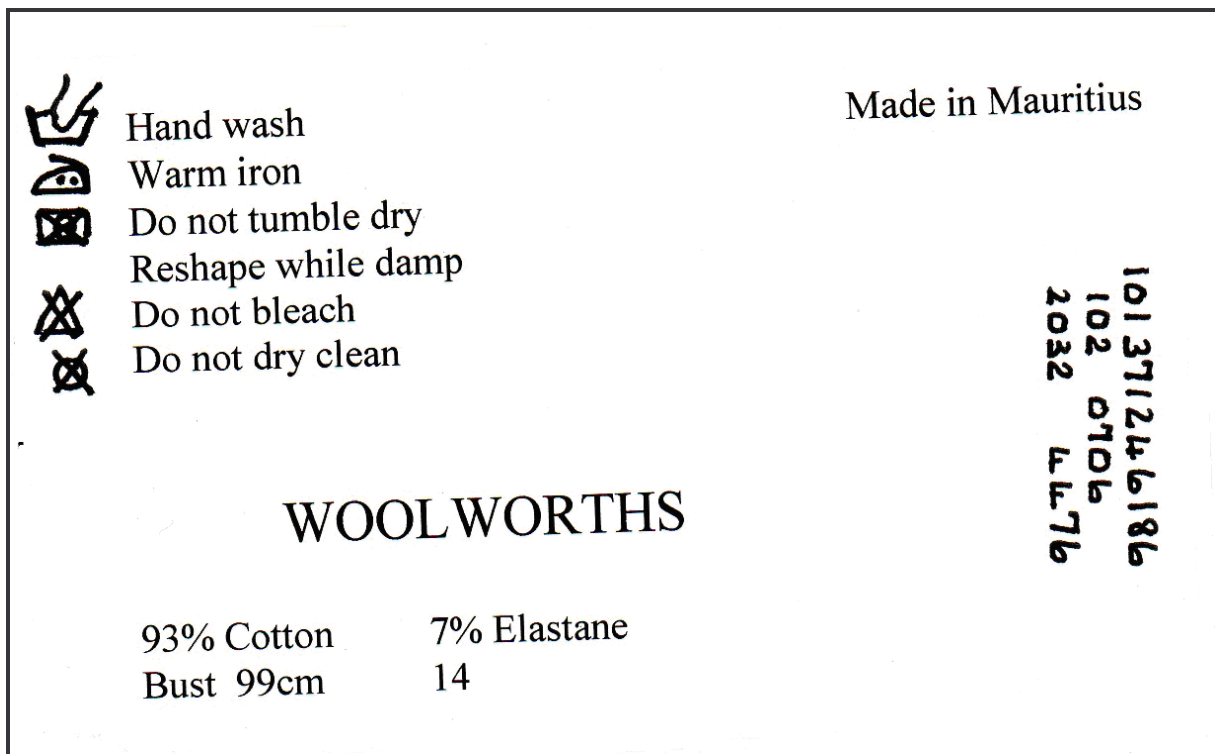
3.3.2 wide hips (4)

3.3.3 big bust (4)

3.4 Name the factors that influence your choice of colour when selecting clothes. (5)

3.4 A disabled person wants to buy a shirt and trousers. Make recommendations regarding aspects around dressing and undressing easily for the person to consider. (4)

3.6 Study the label below and then answer the question:



List any FIVE useful detail on the label that is of importance to you as a consumer.

(5)
[40]

TOTAL SECTION C: 40

SECTION D: HOUSING AND FURNISHINGS

QUESTION 4

4.1 Study the picture below and answer the questions that follow:



4.1.1 Identify the type of balance and give an example.

Tabulate your answer as follows:

TYPE OF BALANCE	EXAMPLES
	•
(2)	• (2)

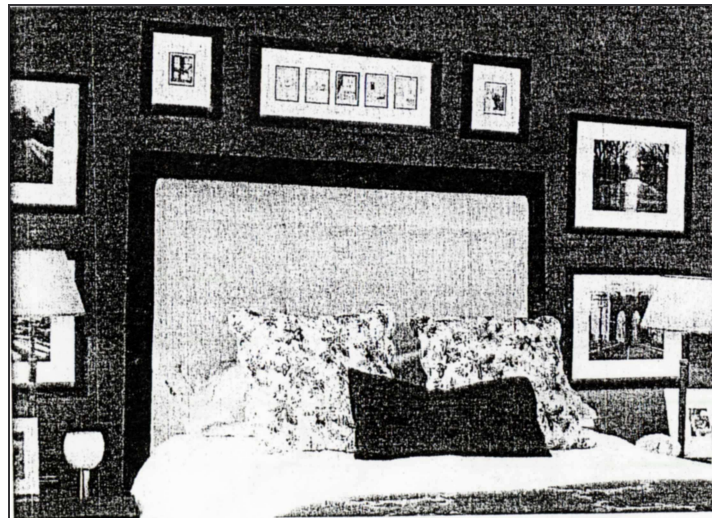
(4)

4.1.2 Identify the focal point and motivate your answer. (3)

4.1.3 Suggest TWO ways to create more space in this room. (2)

4.1.4 A cotton fabric was selected for the curtains.
How suitable will this fabric be for this purpose? (2)

4.2 Study the bedroom below and answer the questions that follow:



4.2.1 Identify TWO examples of rhythm that is evident in this room.

4.2.2 Explain how rhythm was created.

Tabulate your answer as follow.

4.2.1 EXAMPLES OF RHYTHM	4.2.2 EVIDENCE OF APPLICATION
1.	
2.	
(2)	(2 x 2 = 4)

(6)

4.3.1 Name THREE activity areas that are of importance to a family.

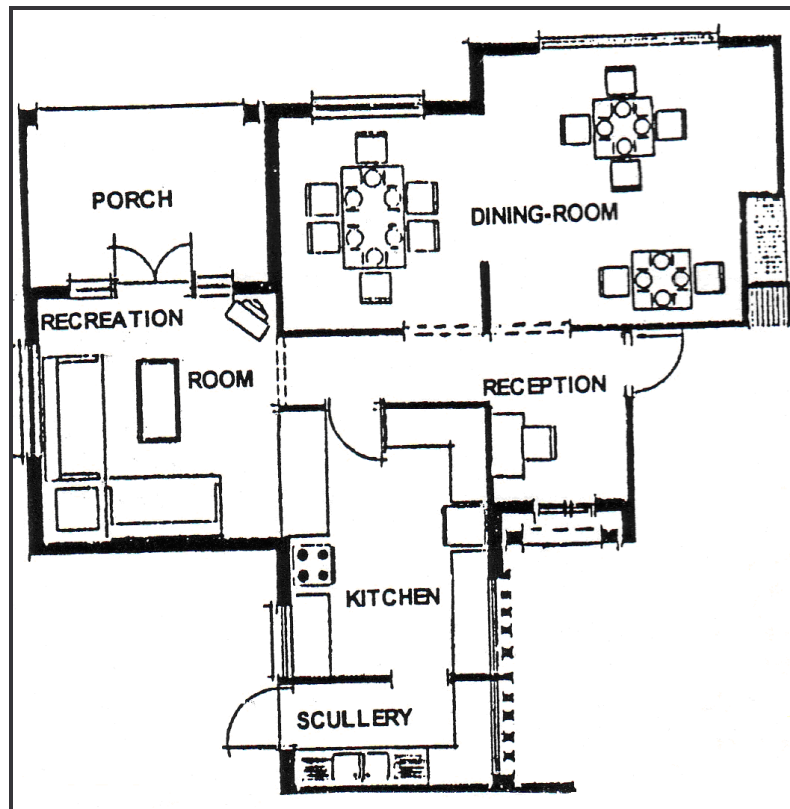
4.3.2 Identify the rooms where these activities take place.

Tabulate your answer as follow:

4.3.1 ACTIVITY AREAS	4.3.2 ROOMS
•	•
•	•
• (3)	• (3)

(6)

4.4 Study the floor plan below and answer the questions that follow:



4.4.1 Does the traffic flow pattern in the dining-room of the guesthouse comply with the requirements?

Explain your answer.

(4)

4.4.2 Explain why carpet underlay/underfelt was used.

(3)

4.4.3 The owner of this guesthouse decided to use nylon as a fibre for the floor covering in the dining-room area. Mention the advantages and disadvantages of this type of floor covering.

Tabulate your answer as follow:

ADVANTAGES	DISADVANTAGES
•	•
•	•
•	•
•	•
• (5)	• (5)

(10)

[40]

TOTAL SECTION D: 40

SECTION E: PRACTICAL COMPONENT**QUESTION 5: FOOD**

Answer ONE question in this section according to the practical option you selected, namely QUESTION 5 or 6 or 7.

5.1 To which class of refining do each of the following cereals belong?

5.1.1 Oats porridge

5.1.2 Maize-meal porridge

5.1.3 Rice (3)

5.2 Decide which cereal (bran flakes, cornflakes or rice crispies) is the healthiest choice. Give reasons for your answer. (3)

5.3 What precautions could be taken when cooking porridge to ensure that NO lumps are formed? (4)

5.4 Hot or cold milk was available for the cereals.

The milk was boiled to ensure it was still hot when used.
Explain the effect of heat on each of the following in milk:

5.4.1 Sugar (3)

5.4.2 Fat globules (3)

5.5 Suggest ways how skin formation, when boiling milk, can be prevented. (4)

5.6 Study the recipe below and answer the questions that follow:

SHORTBREAD

250 g butter (275 ml)
 100 g castor sugar (125 ml)
 240 g cake flour (500 ml)
 60 g cornflour (maizena) (125 ml)
 1 ml salt

Traditional mixing method:

1. Sift the dry ingredients together on a dough board.
2. Put the butter in the middle and slowly mix the dry ingredients in with your hands.
3. Knead till smooth, not oily.
4. Flatten it about 15 mm thick on a greased baking tray.
5. Try to get an evenly round shape. Mark the shortbread in slices and prick with a fork.
6. Bake 15 minutes in a warm oven (200° C) and reduce the temperature to 160° C and bake it till it has a light brown colour (15 – 20 minutes)
7. Cool down on a cooling rack.

5.6.1 Identify the mixing method used to prepare the shortbread. (2)

5.6.2 What advantage is there in using butter? (2)

5.6.3 Which utensil is the correct one to use in the preparation? (1)

5.6.4 Use the table below and answer the following questions:

INGREDIENTS	AMOUNT	AMOUNT USED	PURCHASE PRICE
Cake flour	1 kg (1 000 g)	250 g (500 ml)	R7,95
Cornflour	500 g	60 g (125 ml)	R4,50
Salt	500 g	3 g	R2,95
Castor sugar	500 g	150 g (175 ml)	R6,50
Butter	500 g	150 g	R16,95

Calculate the cost of one batch of shortbread. Show all calculations.

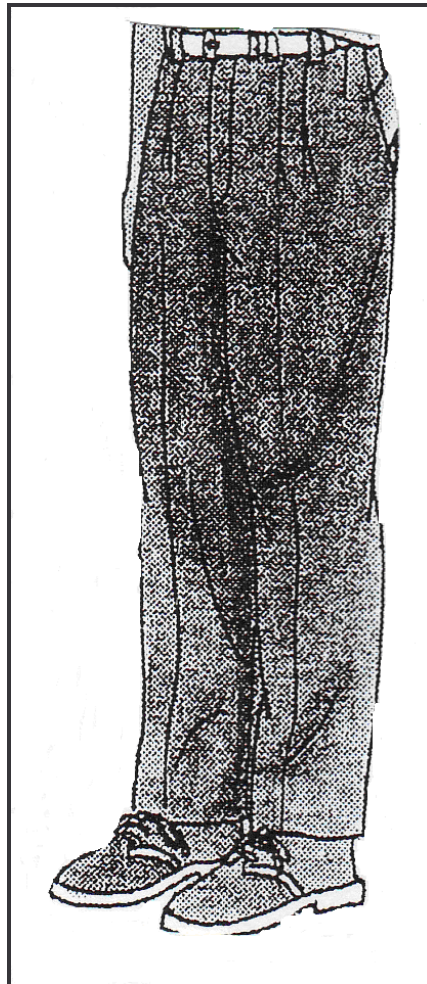
(5 x 2) (10)

5.6.5 If we were doing an accurate costing, what other factors must be included to get the total cost? (5)

[40]

QUESTION 6: CLOTHING

6.1 Study the trousers below and answer the questions that follow:



6.1.1 Explain with a reason what type of hem can be used. (3)

6.1.2 What are the requirements of a good hem? (5)

6.1.3 The trousers is made of a 100% cotton woven fabric. Select a suitable type of zipper to be used in this fabric. Motivate your answer. (3)

6.1.4 Re-arrange the steps of inserting a zip in the correct order:
Write only the correct symbols.

- (A) Turn the garment right side out. Spread the fabric as flat as possible. Hand tack across the bottom and then along the side 10 – 12 mm from the seam line. Topstitch just outside the tacking.
- (B) Extend the right-hand seam allowance. Place the opened zipper face down on the seam allowance with the teeth right next to the seam line.

- (C) Remove the hand tacking and the machine tacking in the placket seam.
- (D) Pin and machine tack along the stitching guideline on the zipper tape. Close the zipper.
- (E) Position the zipper foot to the left of the needle. Turn the zipper face up, forming a fold in the seam allowance. Stitch along the edge of the fold through all the thicknesses.
- (F) Measure and mark the length of the zipper opening on the seamline. Stitch the seam up to this mark, backstitch a few stitches and continue sewing the rest of the seam in tacking stitch.
- (G) Clip tacking threads at regular intervals to make their removal easier. Press the seam open. (7)

6.1.5 Recommend guidelines a person must follow when laying out a pattern. (5)

6.1.6 Use the table below and answer the following questions:

MATERIAL AND NOTIONS FOR ONE TROUSERS	AMOUNT NEEDED	PER METRE/UNIT	R	C
Pattern	1	Each	32	00
1,5 m cotton fabric, 140 cm wide	1,5	Per meter	19	99
1 x 16-cm zip	1	Each	6	99
1 button	1	Each	2	49
1 x reel matching thread	$\frac{1}{2}$	Reel	4	99
0,5 m interfacing for the waistband and pocket openings	0,25	Per meter	10	99

Calculate the cost of one pair of trousers.
Show all calculations. (12)

6.1.7 If we were doing an accurate costing, what other factors must be included to get the total cost? (5)
[40]

QUESTION 7: SOFT FURNISHINGS

7.1 7.1.1 Describe how to make a pattern for a lampshade. (5)

7.1.2 What is used to cover the wire before the fabric is added and why? (2)

7.1.3 Name any THREE examples of decorations that will enhance your lampshade's attractiveness. (3)

7.1.4 Use the table below and answer the questions:

MATERIALS	AMOUNT BOUGHT	AMOUNT USED	PURCHASE PRICE
Fabric	1,5 m	1 m	R22,50
Interfacing	20 cm	20 cm	R40,00
Sewing thread	1	½ reel	R5,00
Wire frame	1	1	R32,00

Calculate the cost of making a lampshade.
Show all calculations. (10)

7.1.5 If you were doing an accurate costing, what other factors must be included to get the total cost? (5)

7.2 Answer the following questions with regard to CURTAINS.

7.2.1 Give FIVE advantages of lining a curtain. (5)

7.2.2 The beauty of a curtain depends on its fullness. Name THREE ways in which fullness in a curtain can be composed. (3)

7.3 7.3.1 FLOW CHARTS

The following are the steps for making voile curtains.
Re-arrange the steps in the correct sequence.

A

Push curtain wire through
the top hem and hang
curtains up

B

Cotton
Voile material
Measurement of windows

C

Scissors, Measuring equipment
Straight pins, Needles; Sewing
machine, Iron, Curtain wire

D

- Measure and cut material to the desired length
- Fold a double 1 cm hem to the wrong side on both sides of material
- Pin, tack and sew
- Fold 1 cm to the wrong side on both the top and bottom frayed sides of material and iron
- Fold another 5,5 cm at the top and bottom
- Pin, tack and sew
- Iron curtains

(4)

7.3.2 Indicate which of the steps in A to D is involved in the production as the ... phase.

- (a) Input
- (b) Process (Throughput)
- (c) Output

(3)

[40]**TOTAL SECTION E: 40****GRAND TOTAL: 200**